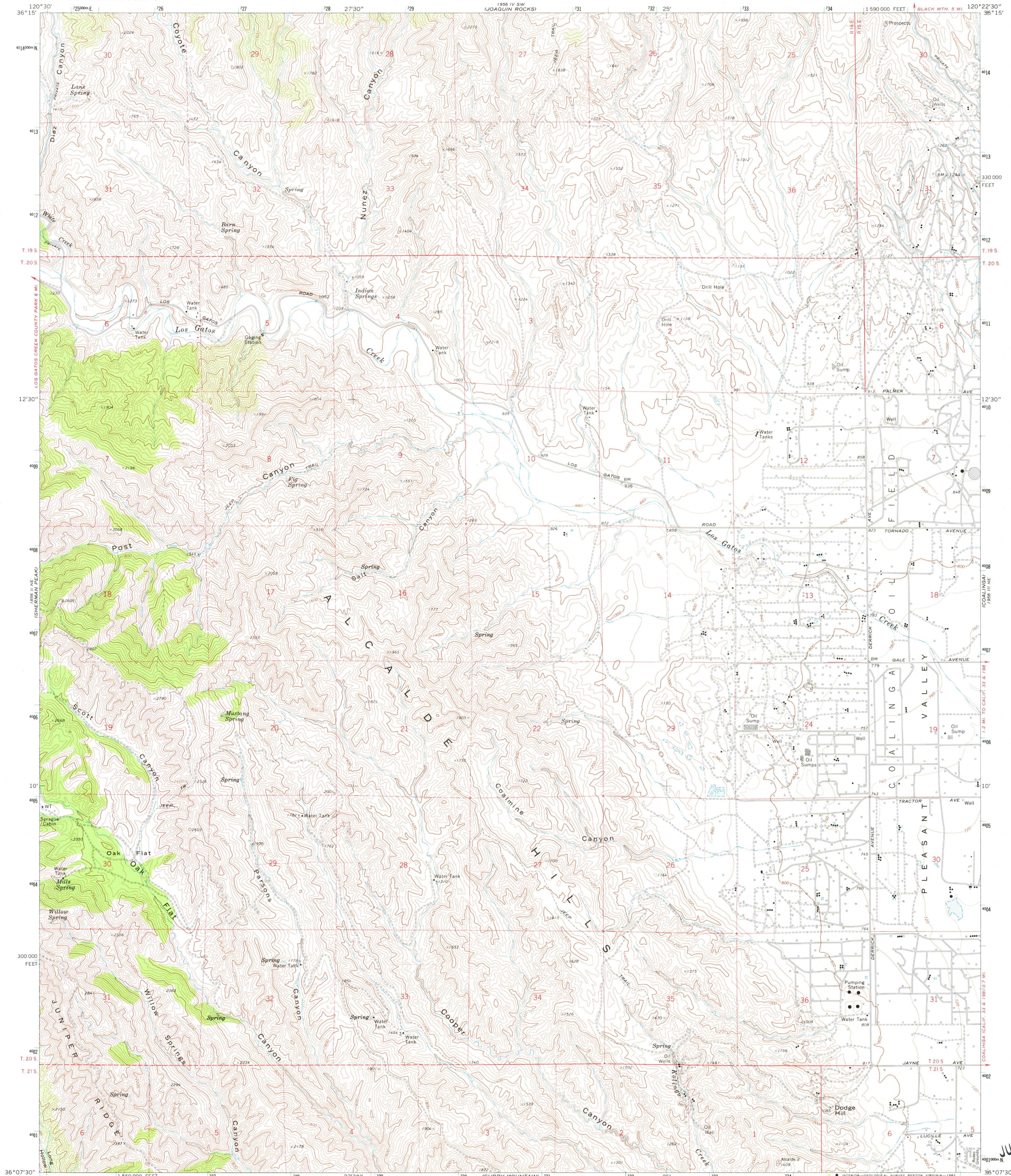
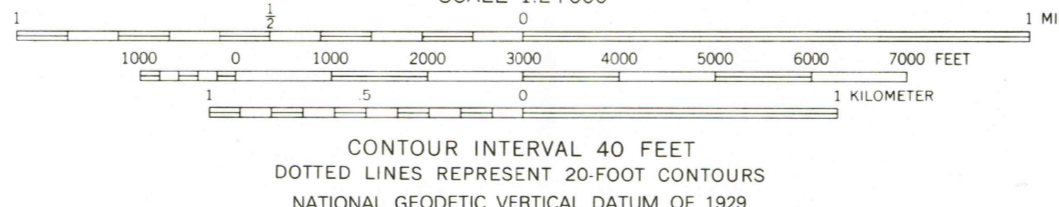
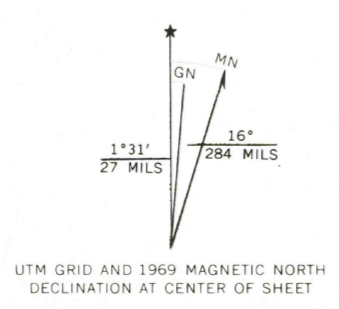


UNITED STATES
DEPARTMENT OF THE INTERIOR
GEOLOGICAL SURVEY

ALCALDE HILLS QUADRANGLE
CALIFORNIA—FRESNO CO.
7.5 MINUTE SERIES (TOPOGRAPHIC)
NW/4 COALINGA 15' QUADRANGLE



Mapped, edited, and published by the Geological Survey
Control by USGS and USC&GS
Topography by photogrammetric methods from aerial photographs taken 1967. Field checked 1969
Polyconic projection. 1927 North American datum
10,000-foot grid based on California coordinate system, zone 4
1000-meter Universal Transverse Mercator grid ticks, zone 10, shown in blue
To place on the predicted North American Datum 1983, move the projection lines 8 meters north and 89 meters east as shown by dashed corner ticks
Fine red dashed lines indicate selected fence lines



ROAD CLASSIFICATION

Primary highway, all weather, hard surface	Light-duty road, all weather, improved surface
Secondary highway, all weather, hard surface	Unimproved road, fair or dry weather

 Interstate Route
 U. S. Route
 State Route



THIS MAP COMPLIES WITH NATIONAL MAP ACCURACY STANDARDS
FOR SALE BY U. S. GEOLOGICAL SURVEY, DENVER, COLORADO 80225, OR RESTON, VIRGINIA 22092
A FOLDER DESCRIBING TOPOGRAPHIC MAPS AND SYMBOLS IS AVAILABLE ON REQUEST

ALCALDE HILLS, CALIF.
NW/4 COALINGA 15' QUADRANGLE
N3607.5—W12022.5/7.5

1969
DMA 1956 III NW—SERIES V695

JUL 26 1969
KREYENHAGEN HILLS