

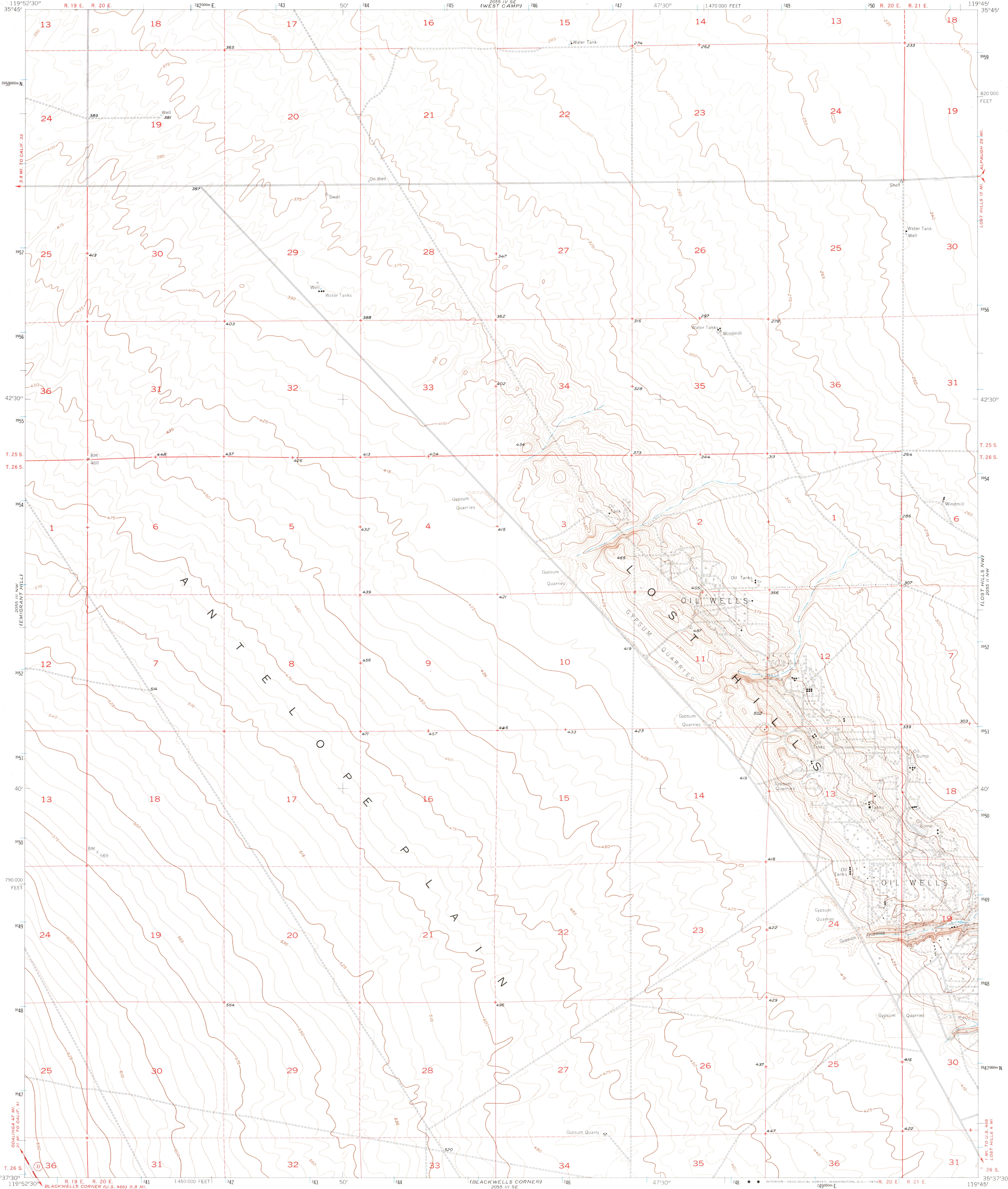
2025 V. 3 (4th EDITION)  
GENERAL DATA

UNITED STATES  
DEPARTMENT OF THE INTERIOR  
GEOLOGICAL SURVEY

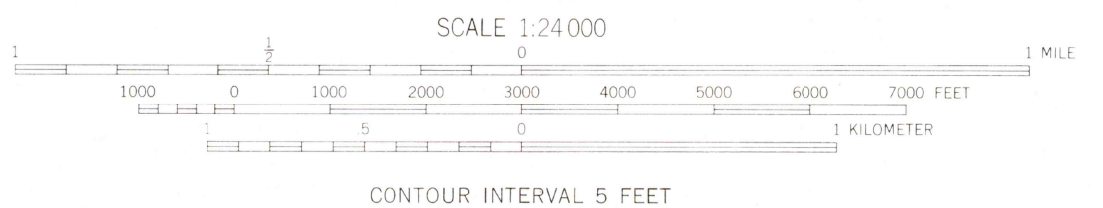
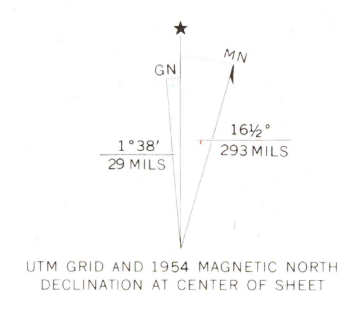
STATE OF CALIFORNIA  
GOODWIN J. KNIGHT, GOVERNOR  
FRANK B. DURKEE, DIRECTOR OF PUBLIC WORKS  
HARVEY O. BANKS, ACTING STATE ENGINEER

ANTELOPE PLAIN QUADRANGLE  
CALIFORNIA—KERN CO.  
7.5 MINUTE SERIES (TOPOGRAPHIC)

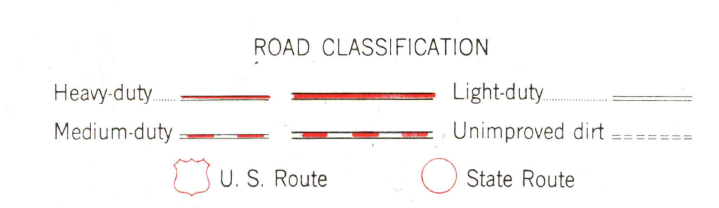
2025 V. 3 (4th EDITION)  
GENERAL DATA  
(LONE TREE WELL)



Mapped, edited, and published by the Geological Survey  
Control by USGS and USC&GS  
Topography by plane-table surveys 1932  
Culture and drainage revised from aerial photographs taken 1950  
Field check and partial contour revision 1954  
Polyconic projection, 1927 North American datum  
10,000-foot grid based on California coordinate system, zone 5  
Dashed land lines indicate approximate locations  
1000-meter Universal Transverse Mercator grid ticks,  
zone 11, shown in blue



CONTOUR INTERVAL 5 FEET  
DATUM IS MEAN SEA LEVEL



HISTORICAL FILE  
TOPOGRAPHIC DIVISION

ANTELOPE PLAIN, CALIF.  
N 3537.5—W 11945/7.5  
1954

AMS 2355 III NE—SERIES V895

FOR SALE BY U.S. GEOLOGICAL SURVEY, DENVER, COLORADO 80225, OR WASHINGTON, D. C. 20242  
A FOLDER DESCRIBING TOPOGRAPHIC MAPS AND SYMBOLS IS AVAILABLE ON REQUEST

JAN 3 1974

2050