

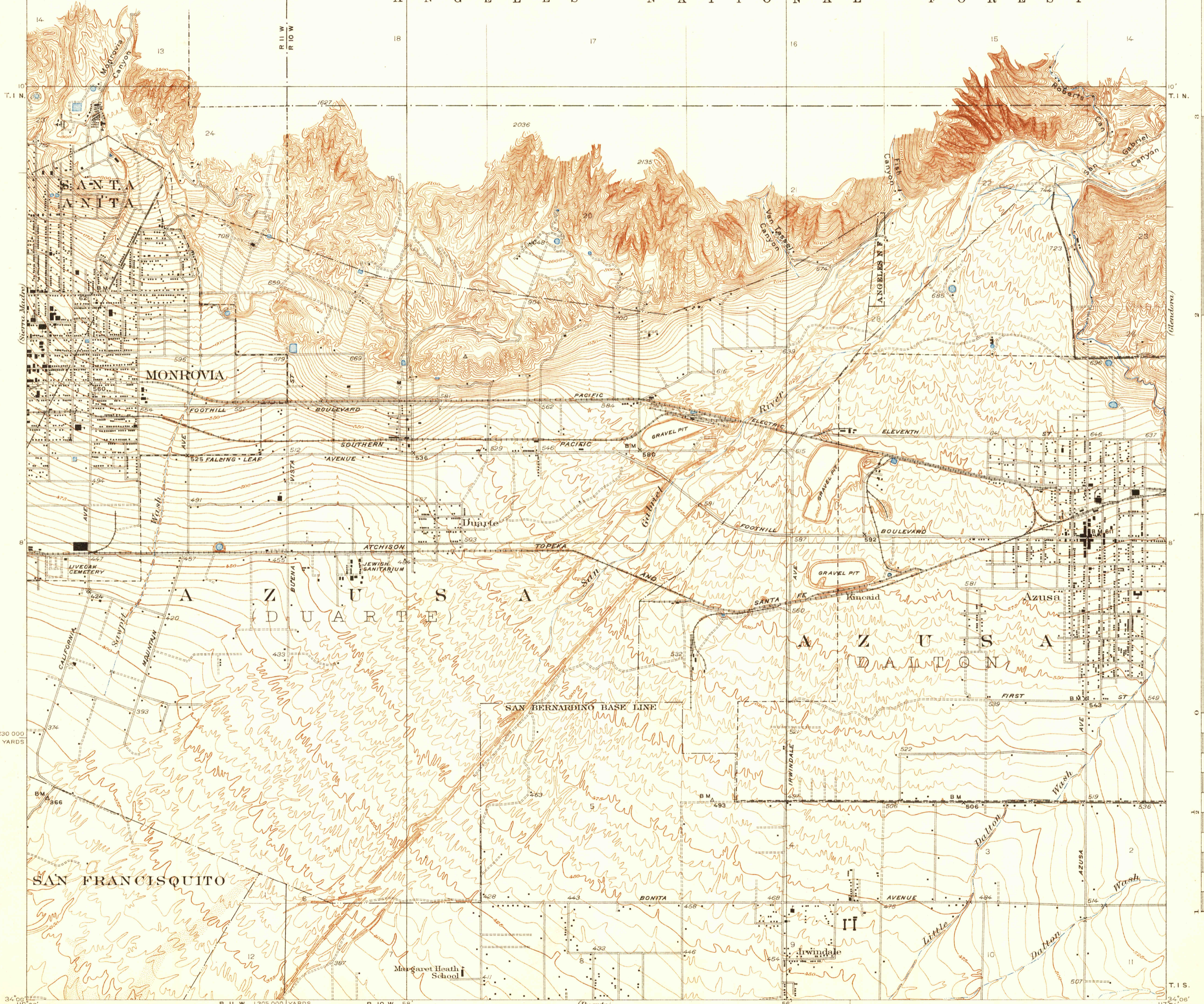
U. S. G. S.  
FILE COPY  
Inspection and Editing.

U. S. G. S.  
FILE COPY  
Inspection and Editing.

THIS AREA IS SHOWN ON THE MAP OF POMONA  
QUADRANGLE, SURVEYED IN 1894, SCALE 1:62,500

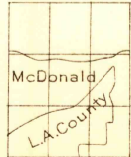
APPROXIMATE BOUNDARY

A N G E L E S N A T I O N A L F O R E S T

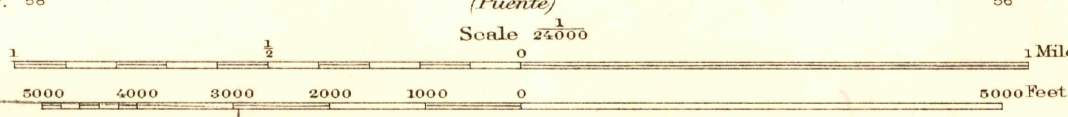


1:230 000  
YARDS

Topography by H.L. McDonald and Los Angeles County  
Control by U.S. Geological Survey  
and U.S. Coast and Geodetic Survey  
Surveyed in 1924-1925



APPROXIMATE MEAN  
DECLINATION, 1955



U. S. G. S.  
FILE COPY  
Inspection and Editing.

Contour interval 5 and 25 feet (see diagram)  
Datum is mean sea level



Polyconic projection, North American datum  
5000 yard grid based upon U.S. zone system, G

USGS  
Historical File  
Topographic Division

AZUSA, CALIF.  
Edition of 1928  
reprinted 1932

AUG 11 1932 (2095)