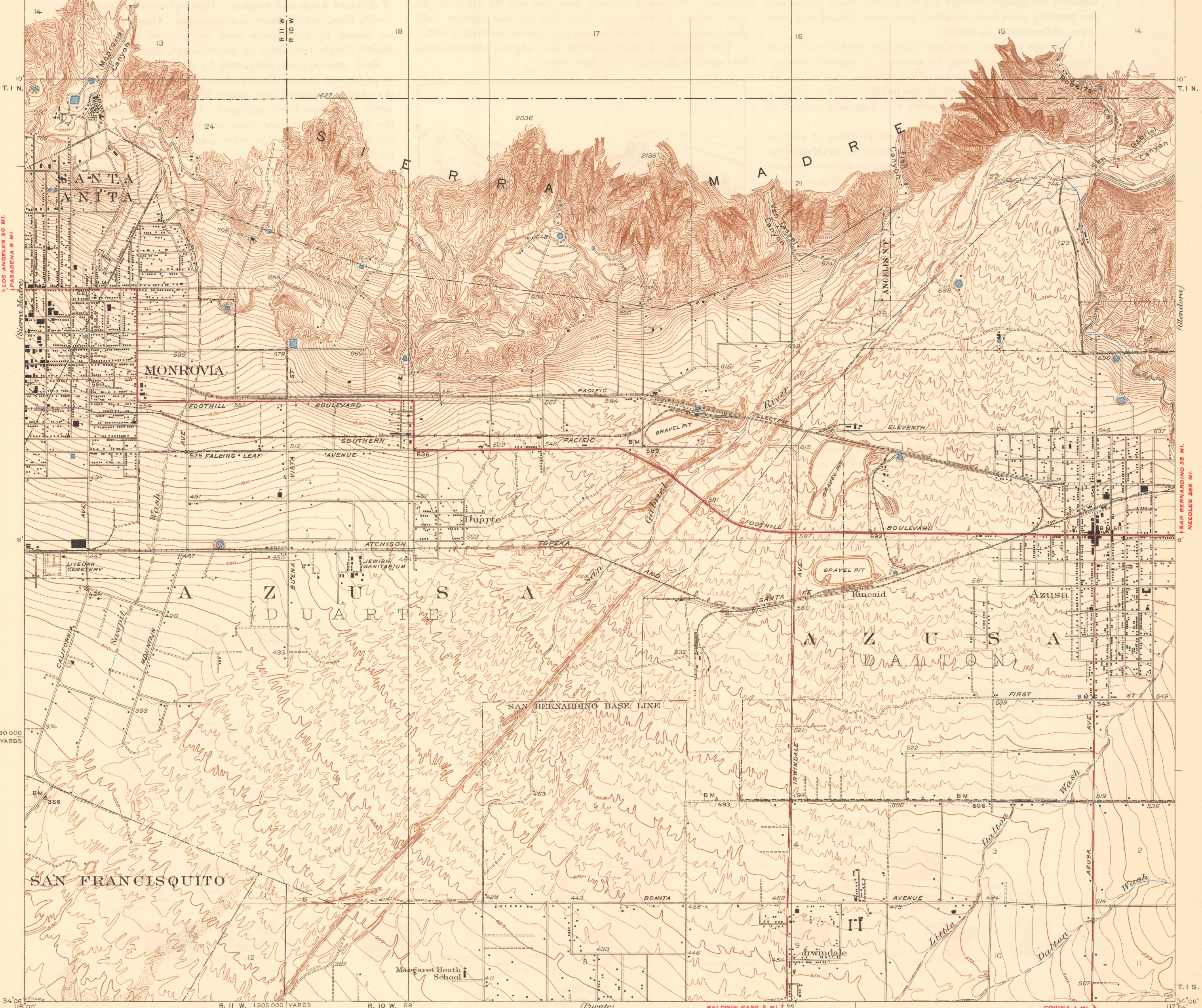


118°00' 58' 56' 117°54' 34'12'

THIS AREA IS SHOWN ON THE MAP OF POMONA
QUADRANGLE, SURVEYED IN 1894, SCALE 1:62,500

APPROXIMATE BOUNDARY

ANGELES NATIONAL FOREST



LOS ANGELES 20 MI.
PASADENA 9 MI.

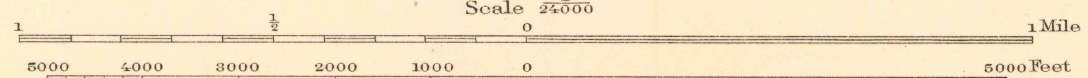
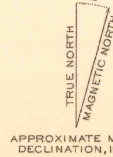
(Glendale)

SAN BERNARDINO 35 MI.
NEEDLES 285 MI.

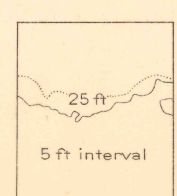
1 230 000
YARDS

(El Monte)

Topography by H.L. McDonald and Los Angeles County
Control by U.S. Geological Survey
and U.S. Coast and Geodetic Survey
Surveyed in 1924-1925



Contour interval 5 and 25 feet (see diagram)
Datum is mean sea level



COVINA 1 MI.
Polyconic projection, North American datum
5000 yard grid based upon U.S. zone system, G

THROUGH ROUTES
SECONDARY ROUTES

5 Miles

T. 1 S.
34°06'
117°54'