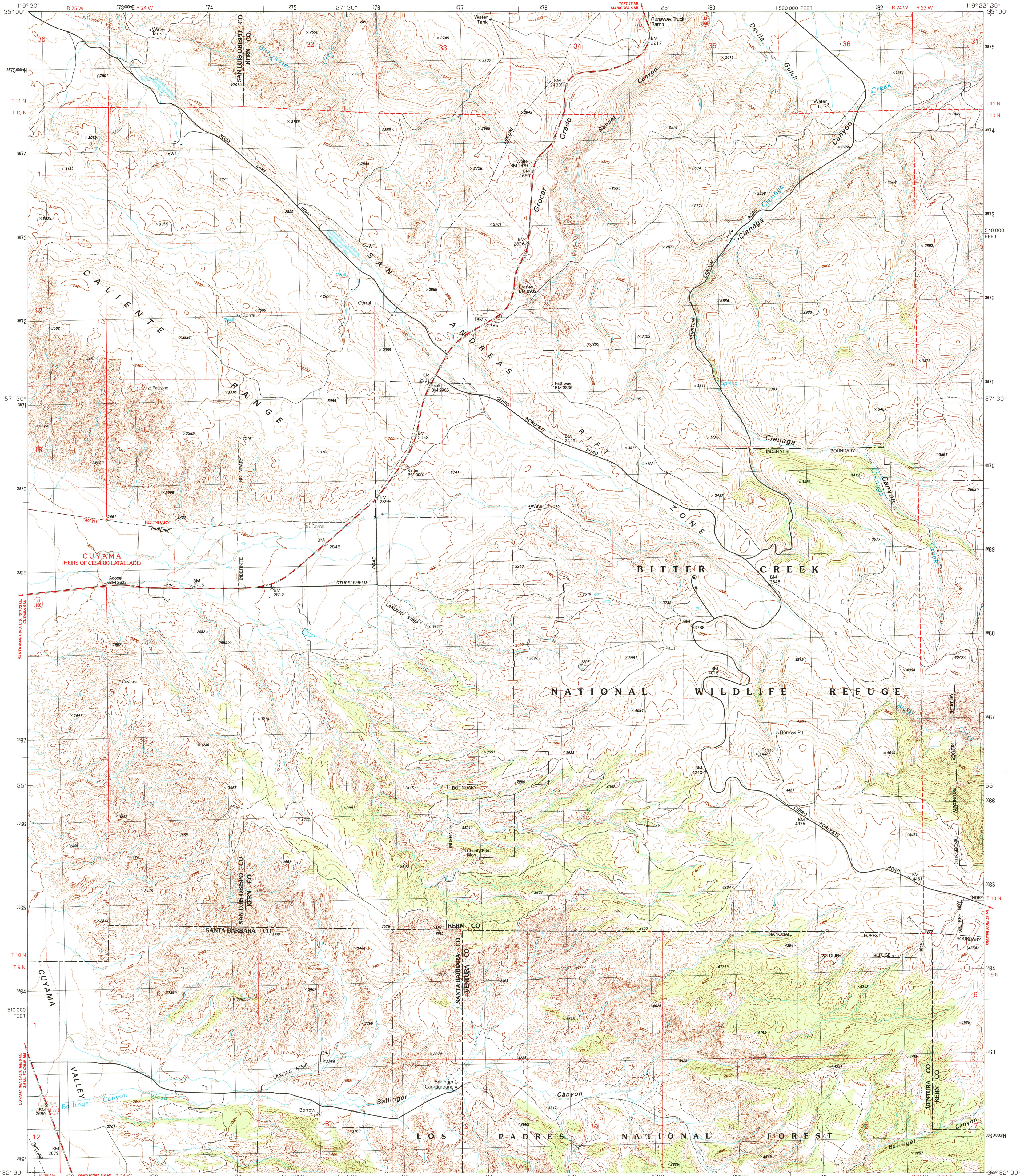
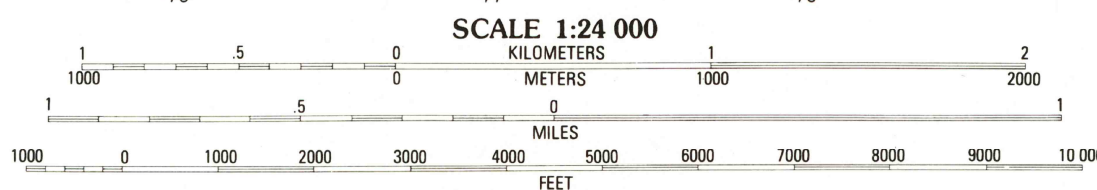
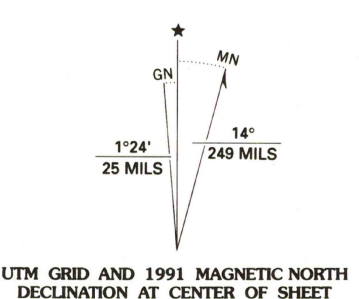


BALLINGER CANYON QUADRANGLE
CALIFORNIA
7.5 MINUTE SERIES (TOPOGRAPHIC)

DEPARTMENT OF THE INTERIOR
 UNITED STATES GEOLOGICAL SURVEY



Produced by the United States Geological Survey
 Control by USGS and NOS/NOAA
 Compiled from aerial photographs taken 1987
 Field checked 1988. Map edited 1991
 North American Datum of 1927 (NAD 27). Projection and
 10 000-foot grid ticks: California Coordinate System, zone 5
 (Lambert Conformal Conic). 1000-meter Universal Transverse
 Mercator grid, zone 11
 The difference between NAD 27 and North American Datum of
 1983 (NAD 83) for 7.5 minute intersections is given in USGS
 Bulletin 1875. The NAD 83 is shown by dashed corner ticks
 There may be private inholdings within the boundaries of the
 National or State reservations shown on this map
 Fine red dashed lines indicate selected fence and field lines which
 generally visible on aerial photographs. This information is
 uncheckd
 Certain land lines are omitted because of insufficient data



CONTOUR INTERVAL 40 FEET
 NATIONAL GEODETIC VERTICAL DATUM OF 1929
 TO CONVERT FEET TO METERS MULTIPLY BY 0.3048
 TO CONVERT METERS TO FEET MULTIPLY BY 3.2808

THIS MAP COMPLIES WITH NATIONAL MAP ACCURACY STANDARDS
 FOR SALE BY U.S. GEOLOGICAL SURVEY
 DENVER, COLORADO 80225 OR RESTON, VIRGINIA 22092
 A FOLDER DESCRIBING TOPOGRAPHIC MAPS AND SYMBOLS IS AVAILABLE ON REQUEST

ROAD CLASSIFICATION

- Primary highway, hard surface Light-duty road, hard or improved surface
- Secondary highway, hard surface Unimproved road
- Interstate Route U. S. Route State Route

QUADRANGLE LOCATION

1	2	3	1 Elkhorn Hills
2	3	4	2 Maricopa
3	4	5	3 Penland
4	5	6	4 Cuyama
5	6	7	5 Santiago Creek
6	7	8	6 Fox Mountain
7	8		7 Cuyama Peak
8			8 Apache Canyon

ADJOINING 7.5' QUADRANGLE NAMES

BALLINGER CANYON, CALIF.
 34119-H4-TF-024
 1991
 DMA 2153 IV NW-SERIES V895

