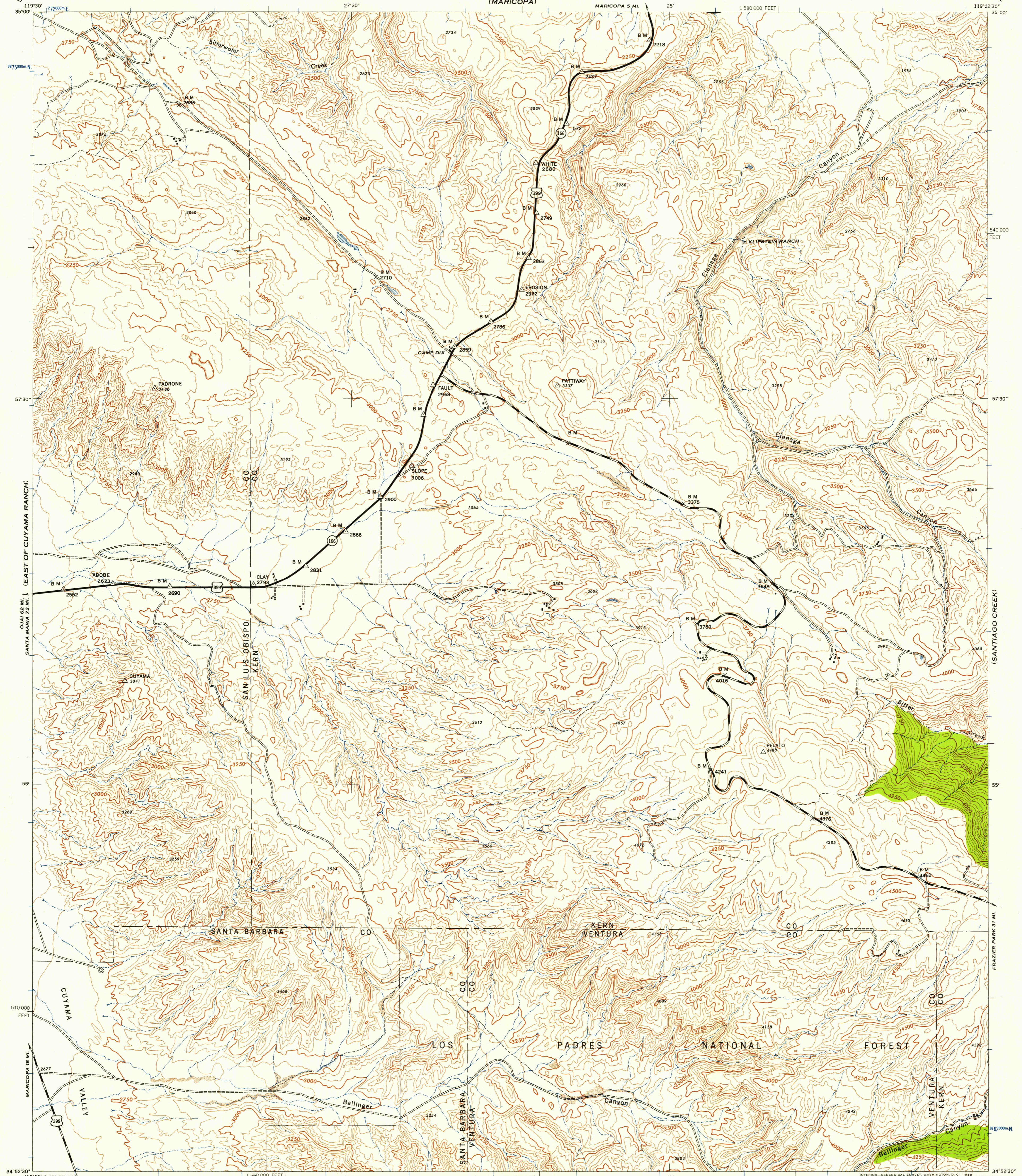


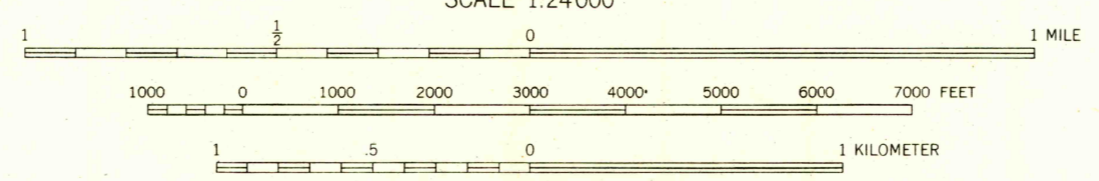
(MARICOPA)



Prepared by U. S. Department of Agriculture, Forest Service, under the direction of the Chief of Engineers, U. S. Army, 1943.
Control by U. S. Coast and Geodetic Survey, U. S. Geological Survey and U. S. Forest Service.
Topography by U. S. Forest Service stereophotogrammetric methods (KEK plotter).
Photography by U. S. Forest Service, 1942.
Polyconic Projection, 1927 North American Datum.

ROAD CLASSIFICATION
Dependable hard-surface, heavy-duty road. Loose-surface graded, dry weather road. U. S. Route 160
Secondary, hard-surface, all-weather road. Dirt road. State Route 30
More than two lanes indicated by note along road with tick at point of change. 3 LANE 4 LANE

THIS MAP COMPLIES WITH THE NATIONAL STANDARD MAP ACCURACY REQUIREMENTS.

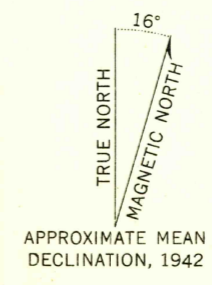


CONTOUR INTERVAL 50 FEET
DATUM IS 1929 MEAN SEA LEVEL

10,000-FOOT GRID TICKS, CALIFORNIA PLANE COORDINATE SYSTEM ZONE 8, SHOWN IN BLACK
1000-METER GRID TICKS, UNIVERSAL TRANSVERSE MERCATOR SYSTEM, ZONE 11, SHOWN IN BLUE

REPRINTED FROM MILITARY EDITION FOR CIVIL USE
FOR SALE BY U. S. GEOLOGICAL SURVEY, DENVER 2, COLORADO OR WASHINGTON 25, D. C.
A FOLDER DESCRIBING TOPOGRAPHIC MAPS AND SYMBOLS IS AVAILABLE ON REQUEST

USGS
Historical File
Topographic Division



U.S.G.S.
FILE COPY
TOPOGRAPHIC DIVISION

BALLINGER CANYON, CALIF.
N3452.5-W11922.5/7.5

MAR 26 1958

1942

955