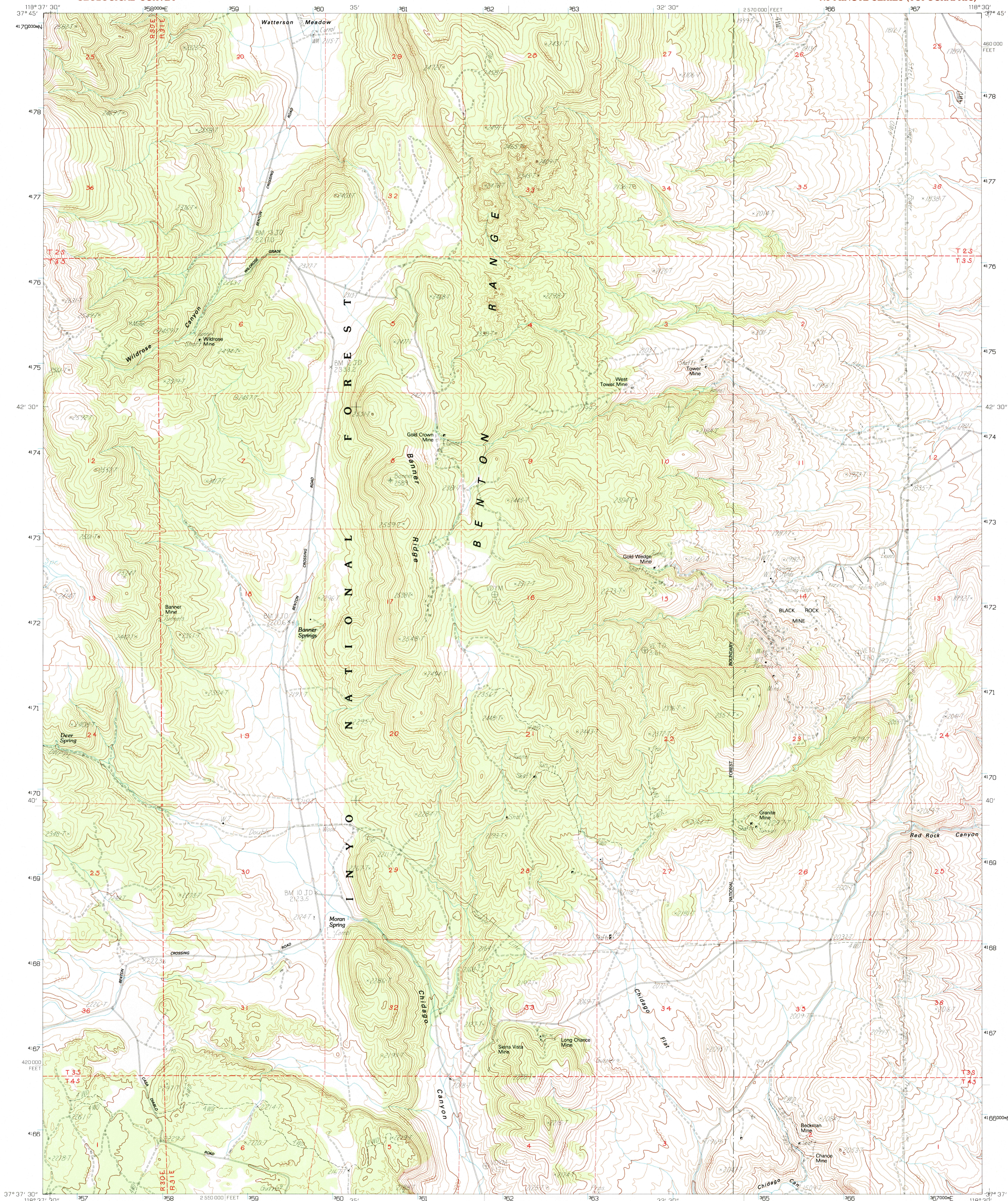


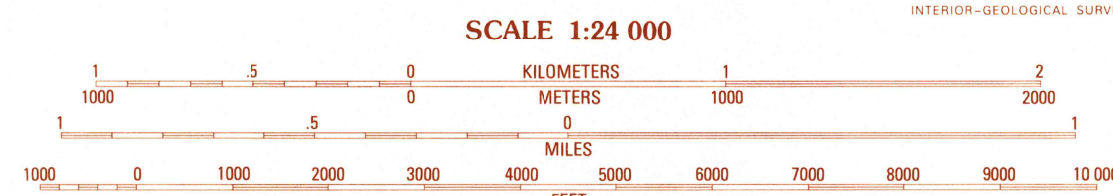
UNITED STATES  
DEPARTMENT OF THE INTERIOR  
GEOLOGICAL SURVEY

BANNER RIDGE QUADRANGLE  
CALIFORNIA-MONO CO.  
7.5 MINUTE SERIES (TOPOGRAPHIC)



PRODUCED BY THE UNITED STATES GEOLOGICAL SURVEY  
CONTROL BY ..... USGS, NOS/NOAA  
COMPILED FROM AERIAL PHOTOGRAPHS TAKEN ..... 1976, 1979  
FIELD CHECKED ..... 1980, MAP EDITED ..... 1984  
PROJECTION ..... UNIVERSAL TRANSVERSE MERCATOR  
BLUE 1000-METER UNIVERSAL TRANSVERSE MERCATOR Ticks, ZONE 11  
10 000-FOOT STATE GRID Ticks ..... CALIFORNIA, ZONE 3  
UTM GRID DECLINATION ..... 15° WEST  
1994 MAGNETIC NORTH DECLINATION ..... 15° EAST  
VERTICAL DATUM ..... NATIONAL GEODETIC VERTICAL DATUM OF 1929  
HORIZONTAL DATUM ..... NORTH AMERICAN DATUM OF 1927 (NAD 27)  
North American Datum of 1983 (NAD 83) is shown by dashed corner ticks. The values of the shift between NAD 27 and NAD 83 for 7.5-minute intersections are obtainable from National Geodetic Survey NADCON software.  
There may be private inholdings within the boundaries of any Federal and State reservations shown on this map.  
Photorevised from 1990 source; no major culture or drainage changes observed. Boundaries verified and names revised 1994.

**PROVISIONAL MAP**  
Produced from original  
manuscript drawings. Informa-  
tion shown as of date of  
field check.



THIS MAP COMPLIES WITH NATIONAL MAP ACCURACY STANDARDS  
FOR SALE BY U.S. GEOLOGICAL SURVEY, DENVER COLORADO 80225, OR RESTON, VIRGINIA 22092



QUADRANGLE LOCATION

1	2	3	1 Glass Mtn.
4	5	2 Benton Hot Springs	
6	7	3 Benton	
		4 Watterson Canyon	
		5 Hamill Valley	
		6 Toms Place	
		7 Casa Diablo Mtn.	
		8 Chicago Canyon	

ADJOINING 7.5' QUADRANGLE NAMES

CONTOURS AND ELEVATIONS IN METERS  
ROAD LEGEND

Improved Road .....  
Unimproved Road .....  
Trail .....  
Interstate Route ..... U.S. Route ..... State Route .....

**BANNER RIDGE, CA**  
PROVISIONAL EDITION 1984

37118-F5-TM-024  
MINOR REVISION 1994

USES HISTORICAL  
MAP ARCHIVES  
DEC 21 1994  
REC'D FILE COPY