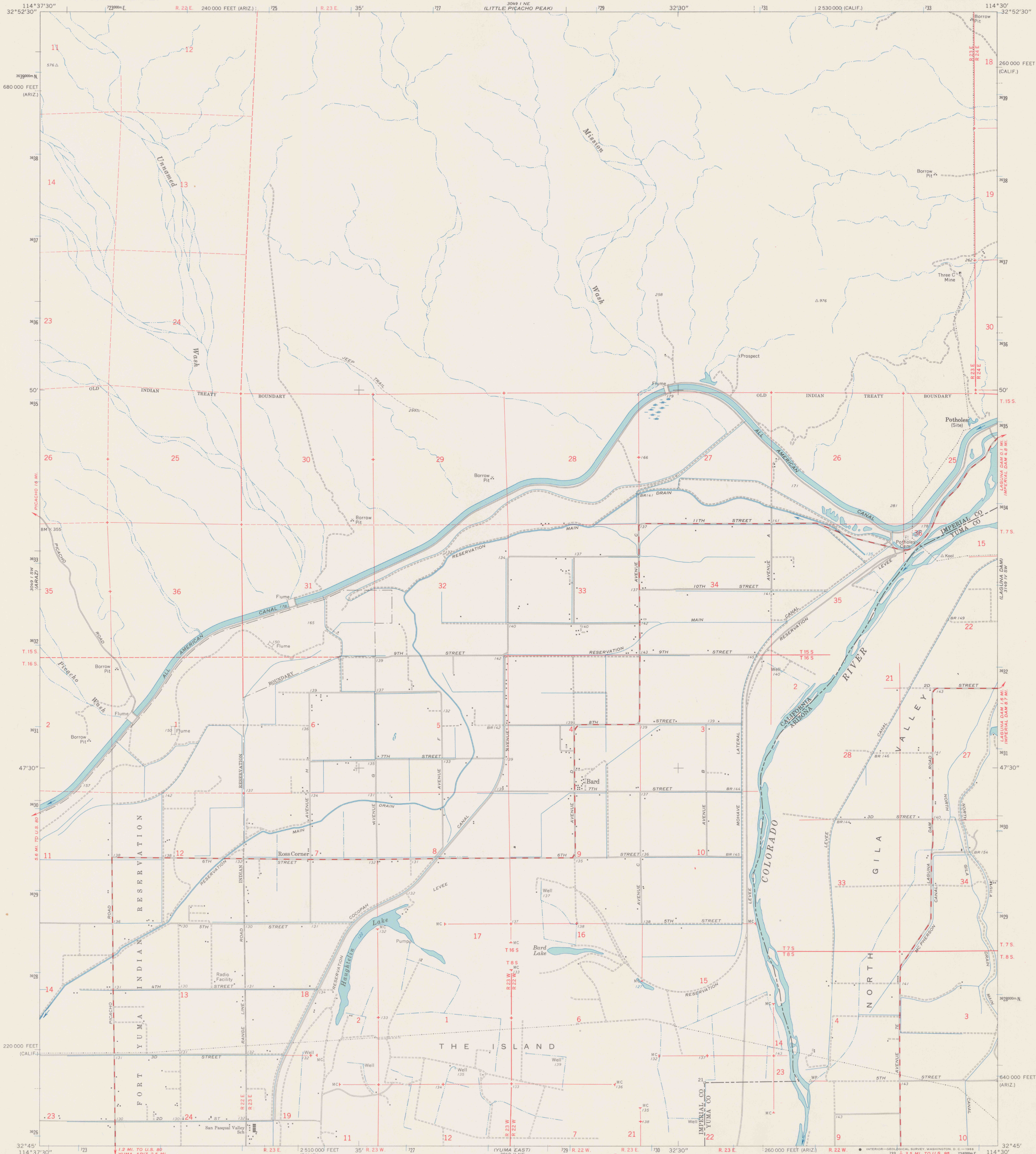


UNITED STATES  
DEPARTMENT OF THE INTERIOR  
GEOLOGICAL SURVEY

BARD QUADRANGLE  
CALIFORNIA—ARIZONA  
7.5 MINUTE SERIES (TOPOGRAPHIC)  
SE/4 PICACHO PEAK 15' QUADRANGLE

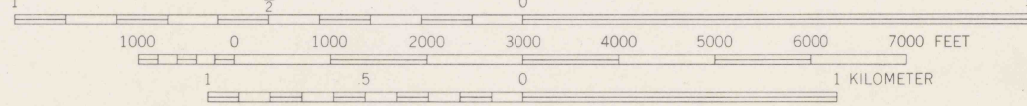
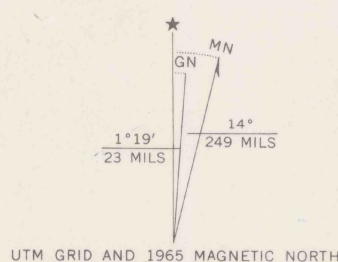


Mapped, edited, and published by the Geological Survey  
in cooperation with the State of California

Control by USGS, USC&GS, USCE, and City of Los Angeles  
Topography by photogrammetric methods from aerial photographs  
taken 1948, and by planetable surveys 1952. Revised from aerial  
photographs taken 1961, and by planetable surveys 1965

Polyconic projection. 1927 North American datum  
10,000-foot grids based on California coordinate system, zone 6  
and Arizona coordinate system, west zone  
1000-meter Universal Transverse Mercator grid ticks,  
zone 11, shown in blue

Where omitted, land lines have not been established



CONTOUR INTERVAL 20 FEET  
DOTTED LINES REPRESENT 5-FOOT CONTOURS  
DATUM IS MEAN SEA LEVEL

THIS MAP COMPLIES WITH NATIONAL MAP ACCURACY STANDARDS  
FOR SALE BY U.S. GEOLOGICAL SURVEY, DENVER, COLORADO 80225, OR WASHINGTON, D. C. 20242  
A FOLDER DESCRIBING TOPOGRAPHIC MAPS AND SYMBOLS IS AVAILABLE ON REQUEST



QUADRANGLE LOCATION

ROAD CLASSIFICATION  
Medium-duty ——— Light-duty ———  
Unimproved dirt ———

**DO NOT CIRCULATE**

BARD, CALIF.—ARIZ.  
SE/4 PICACHO PEAK 15' QUADRANGLE  
N3245—W11430/7.5

1965  
AMS 3049 I SE—SERIES V895

REFERENCE  
REF  
3700#

Var  
U5

7.5  
ed. 1965

1965  
1965