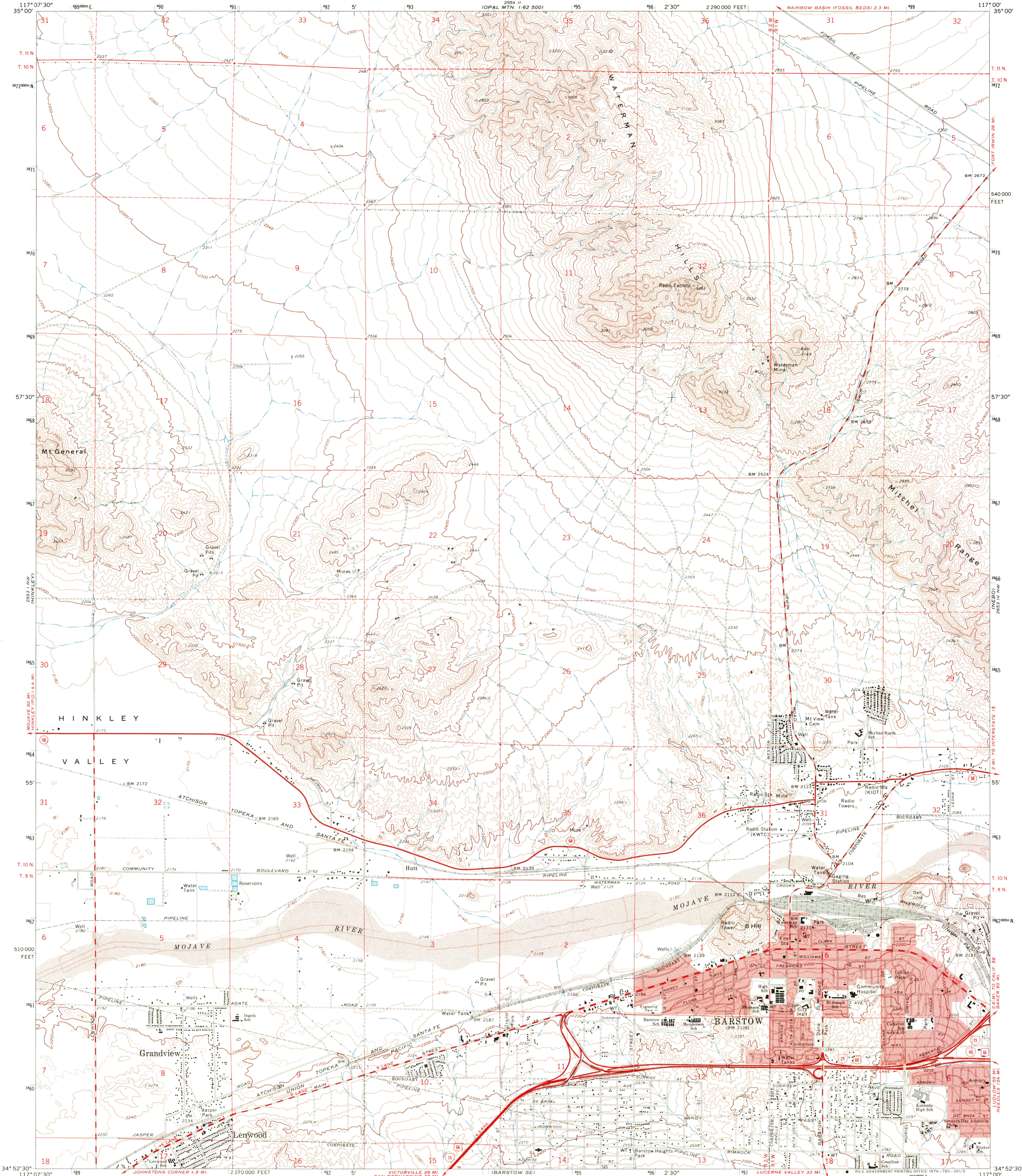
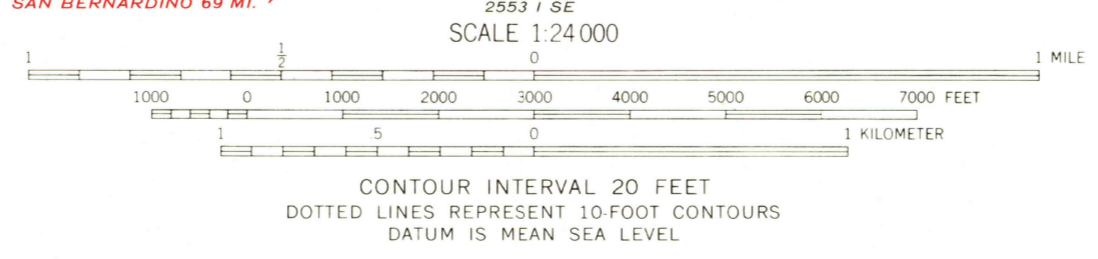
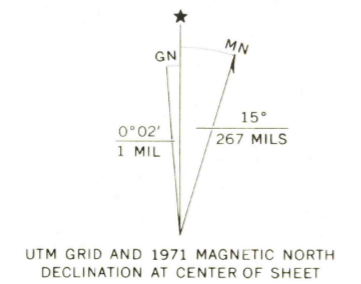


UNITED STATES
DEPARTMENT OF THE INTERIOR
GEOLOGICAL SURVEY

BARSTOW QUADRANGLE
CALIFORNIA—SAN BERNARDINO CO.
7.5 MINUTE SERIES (TOPOGRAPHIC)
NE 1/4 BARSTOW 15' QUADRANGLE



Mapped, edited, and published by the Geological Survey
Control by USGS and USC&GS
Topography by photogrammetric methods from aerial
photographs taken 1970. Field checked 1971
Projection and 10,000-foot grid ticks: California coordinate
system, zone 5 (Lambert conformal conic)
1000-meter Universal Transverse Mercator grid ticks,
zone 11, shown in blue. 1927 North American datum
Red tint indicates areas in which only landmark buildings are shown
Fine red dashed lines indicate selected fence lines



ROAD CLASSIFICATION

Primary highway, hard surface	Light-duty road, hard or improved surface
Secondary highway, hard surface	Unimproved road
Interstate Route	U.S. Route
	State Route

THIS MAP COMPLIES WITH NATIONAL MAP ACCURACY STANDARDS
FOR SALE BY U. S. GEOLOGICAL SURVEY, DENVER, COLORADO 80225, OR WASHINGTON, D. C. 20242
A FOLDER DESCRIBING TOPOGRAPHIC MAPS AND SYMBOLS IS AVAILABLE ON REQUEST

USGS JUL 26 1974
Historical File
Topographic Division
BARSTOW, CALIF.
NE 1/4 BARSTOW 15' QUADRANGLE
N 3452.5—W 11700/7.5
1971

OPAL MTN. 1:62 500
LANE MTN. 1:62 500
35° 00'
T. 11 N.
T. 10 N.
372000 N.
371
370
369
57° 30'
368
367
366
365
364
55'
363
T. 10 N.
T. 9 N.
362
510000 FEET
361
360
34° 52' 30"
117° 07' 30"
489
2270000 FEET
492
5'
495
2' 30"
496
2290000 FEET
499
117° 00'
35° 00'
FORT IRWIN 28 MI.
540000 FEET
2 MI. TO INTERSTATE 15
2 MI. TO CALIF. 98
2 MI. TO CALIF. 99
2 MI. TO CALIF. 97
3600
50 plane