

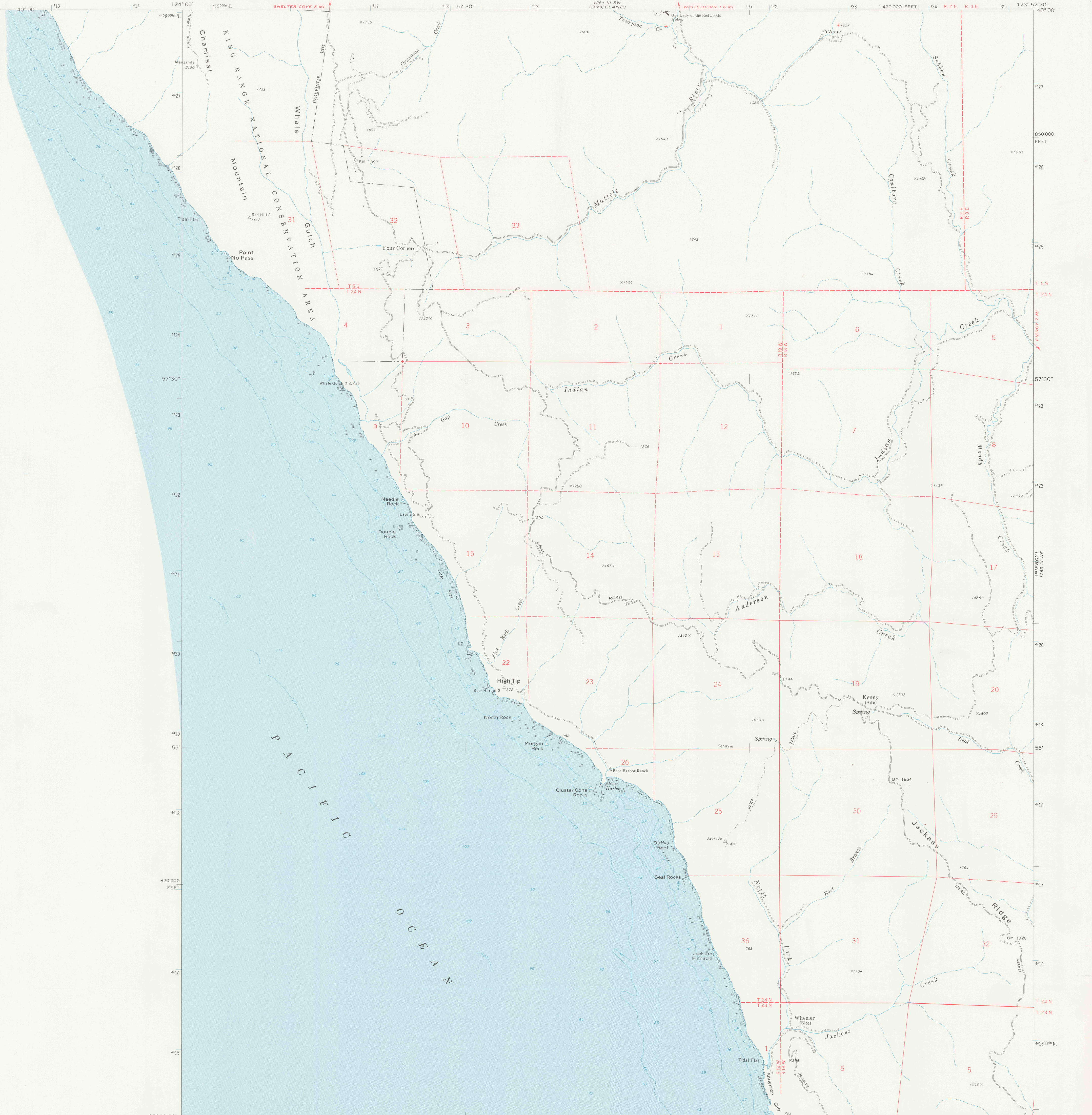
1:125,000
SHELTER COVE

UNITED STATES
DEPARTMENT OF THE INTERIOR
GEOLOGICAL SURVEY

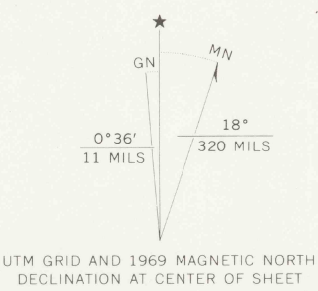
STATE OF CALIFORNIA
DEPARTMENT OF WATER RESOURCES

BEAR HARBOR QUADRANGLE
CALIFORNIA—MENDOCINO CO.
7.5 MINUTE SERIES (TOPOGRAPHIC)

1:250,000
GARBEEVILLE



Mapped, edited, and published by the Geological Survey
Control by USGS and USC&GS
Topography by photogrammetric methods from aerial
photographs taken 1968. Field checked 1969
surveys (1935).
Selected hydrographic data compiled from USC&GS
surveys (1935).
This information is not intended for navigational purposes
Projection and 10,000-foot grid ticks: California coordinate
system, zone 2 (Lambert conformal conic)
1000-meter Universal Transverse Mercator grid ticks,
zone 10, shown in blue. 1927 North American datum
Certain land lines are omitted because of insufficient data



CONTOUR INTERVAL 40 FEET
DATUM IS MEAN SEA LEVEL
DEPTH CURVES AND SOUNDINGS IN FEET—DATUM IS MEAN LOWER LOW WATER
SHOWELINE SHOWN REPRESENTS THE APPROXIMATE LINE OF MEAN HIGH WATER
THE MEAN RANGE OF TIDE IS APPROXIMATELY 4 FEET

ROAD CLASSIFICATION

Primary highway, hard surface	Light-duty road, hard or improved surface
Secondary highway, hard surface	Unimproved road
Interstate Route	U. S. Route
	State Route



FOR SALE BY U. S. GEOLOGICAL SURVEY, DENVER, COLORADO 80225, OR WASHINGTON, D. C. 20242
A FOLDER DESCRIBING TOPOGRAPHIC MAPS AND SYMBOLS IS AVAILABLE ON REQUEST

DO NOT CIRCULATE 1969
AMS 1263 IV NW—SERIES V895

REF 3700a
Var U5
7.5
ed. 1969
rep. 1974