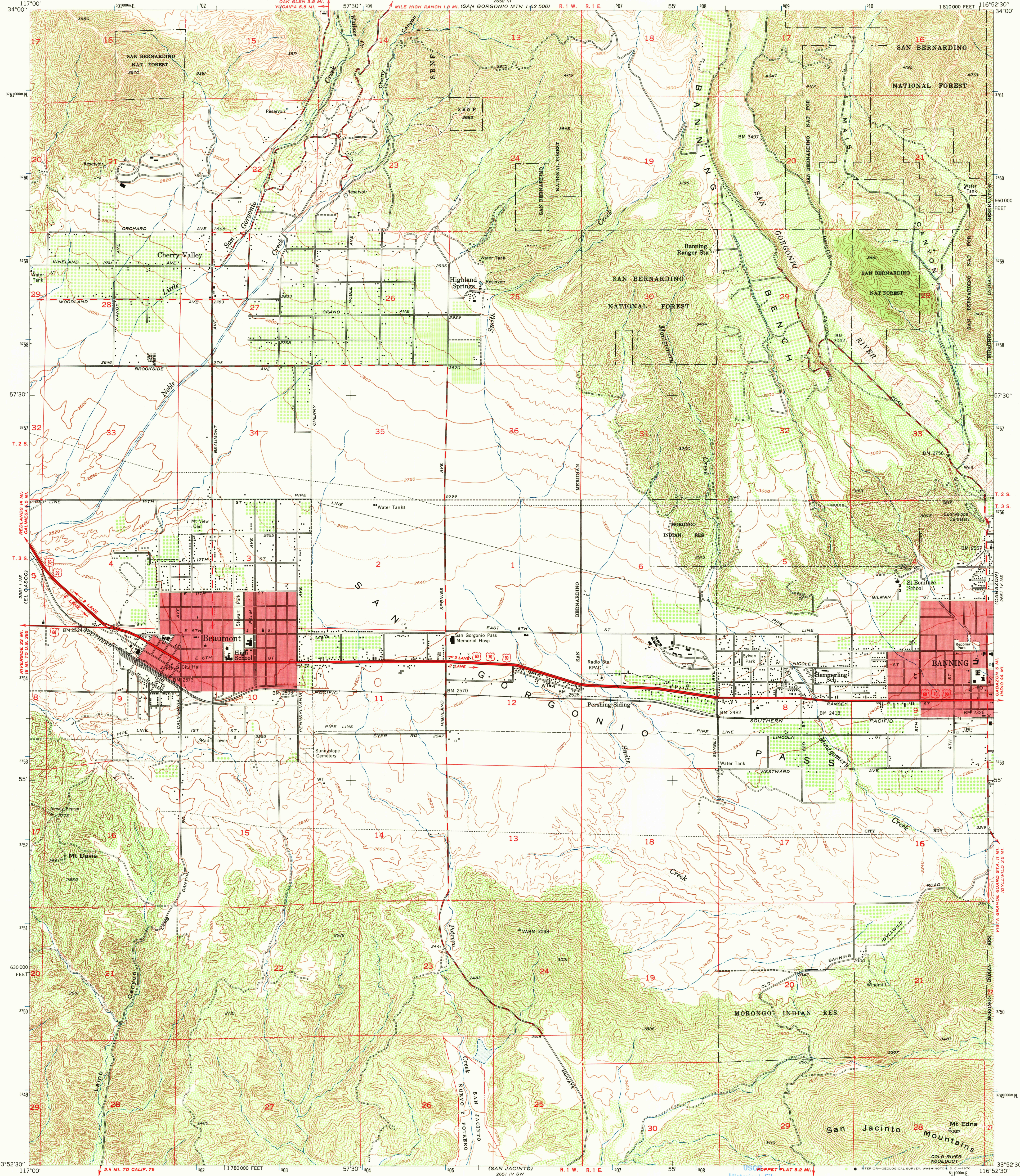


33°52'30" N
117°00' W
(YUCAIPA)

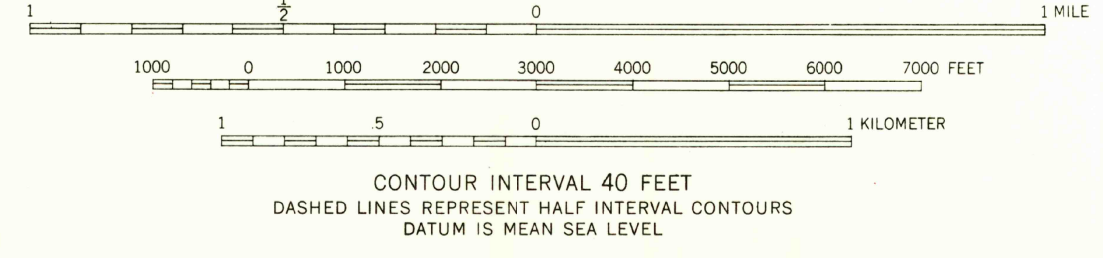
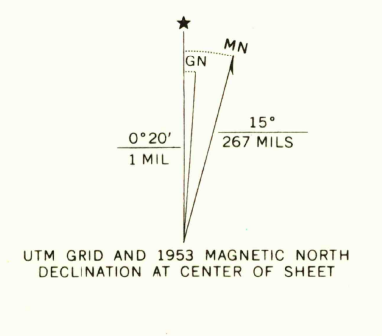
UNITED STATES
DEPARTMENT OF THE INTERIOR
GEOLOGICAL SURVEY

BEAUMONT QUADRANGLE
CALIFORNIA-RIVERSIDE CO.
7.5 MINUTE SERIES (TOPOGRAPHIC)
NW/4 BANNING 15' QUADRANGLE

116°52'30" W
34°00' N
(SAN GORGONIO MOUNTAIN)

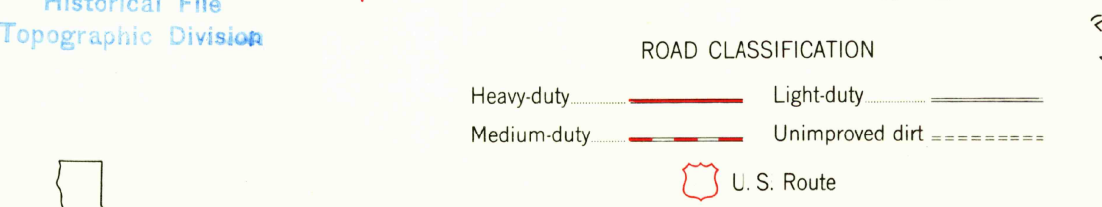


Maped, edited, and published by the Geological Survey
Control by USC&GS and Metropolitan Water
District of Southern California
Topography from aerial photographs by photogrammetric methods
Aerial photographs taken 1949. Field check 1953
Polyconic projection. 1927 North American datum
10,000-foot grid based on California coordinate system, zone 6
Dashed land lines indicate approximate locations
Red tint indicates areas in which only landmark buildings are shown
1000-meter Universal Transverse Mercator grid ticks,
zone 11, shown in blue



CONTOUR INTERVAL 40 FEET
DASHED LINES REPRESENT HALF INTERVAL CONTOURS
DATUM IS MEAN SEA LEVEL

THIS MAP COMPLIES WITH NATIONAL MAP ACCURACY STANDARDS
FOR SALE BY U.S. GEOLOGICAL SURVEY, DENVER, COLORADO 80225, OR WASHINGTON, D. C. 20242
A FOLDER DESCRIBING TOPOGRAPHIC MAPS AND SYMBOLS IS AVAILABLE ON REQUEST



U.S.G.S.
FILE COPY
TOPOGRAPHIC DIVISION

BEAUMONT, CALIF.
NW/4 BANNING 15' QUADRANGLE
N3352.5-W11652.5/7.5

1953
AMS 2651 IV NW-SERIES V895

5210