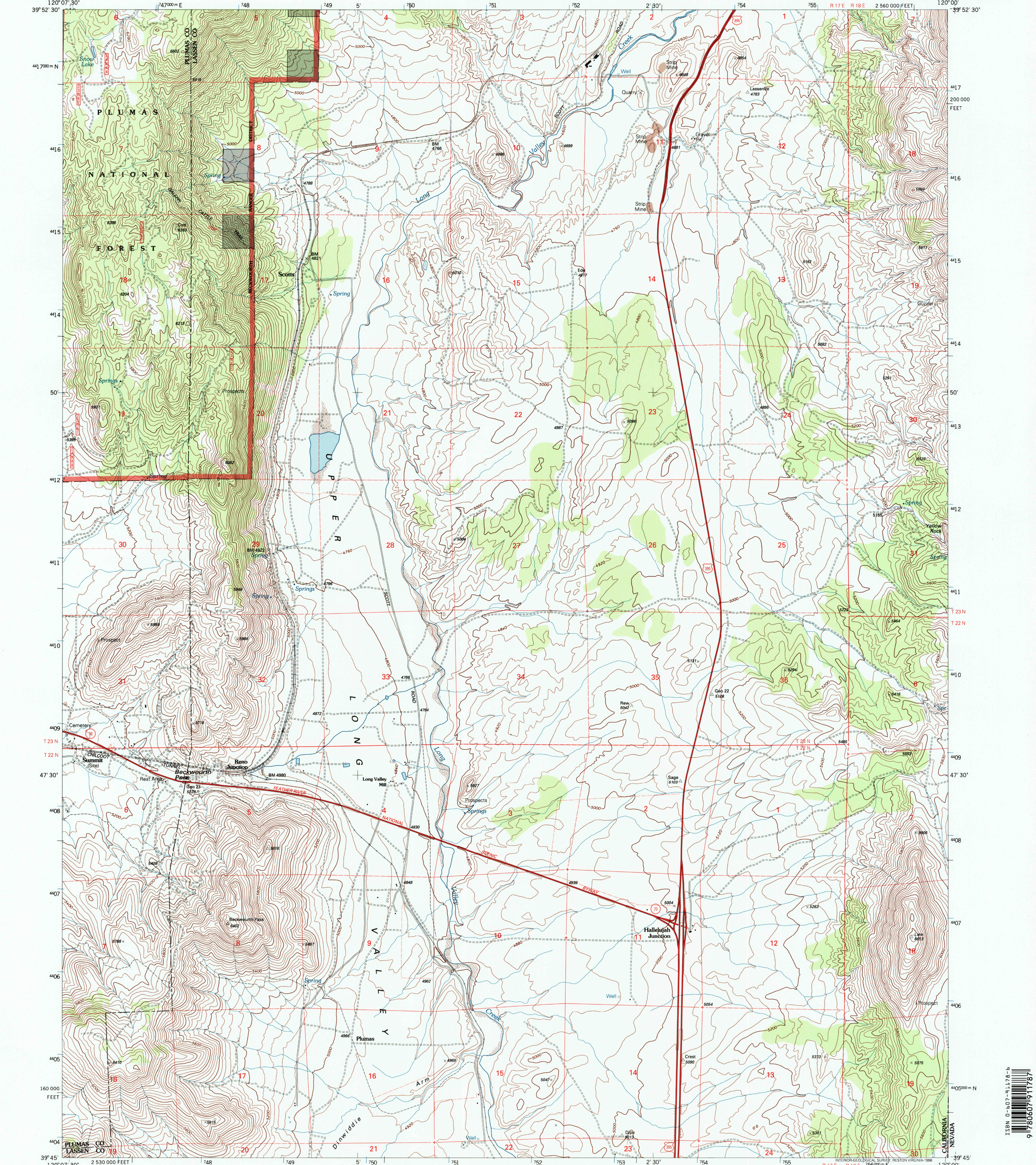




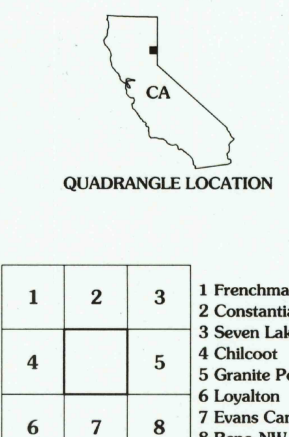
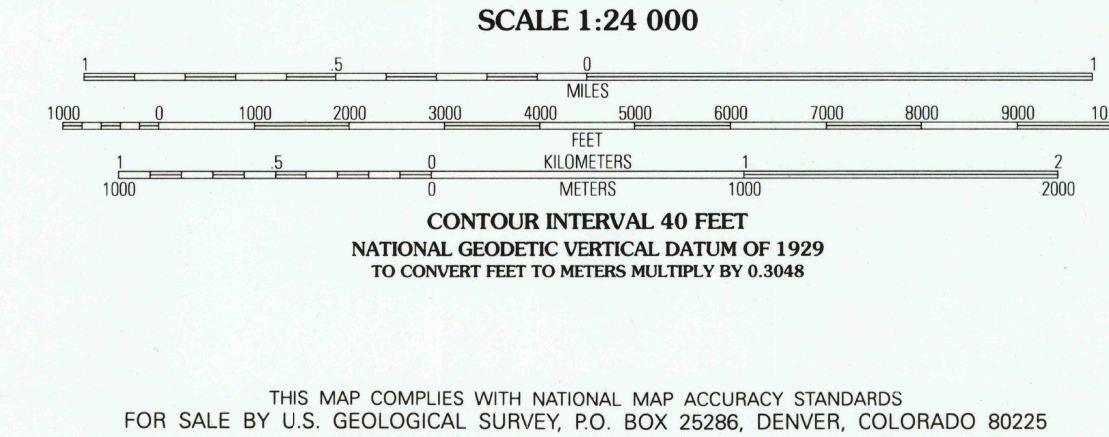
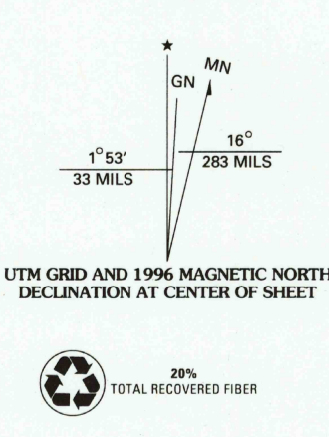
U.S. DEPARTMENT OF THE INTERIOR  
U.S. GEOLOGICAL SURVEY

UNITED STATES  
DEPARTMENT OF AGRICULTURE  
FOREST SERVICE

BECKWORTH PASS QUADRANGLE  
CALIFORNIA  
7.5-MINUTE SERIES (TOPOGRAPHIC)



Produced by the U.S. Geological Survey  
Revised by the U.S. Forest Service  
Control by USGS, NOS/NOAA, and US Forest Service  
Compiled from aerial photographs taken 1966 and 1973. Revised from aerial photographs taken 1993. Partial field check by U.S. Forest Service 1994  
North American Datum of 1927 (NAD 27). Projection and 10 000-foot ticks: California coordinate system, zone 1 (Lambert conformal conic). Blue 1000-meter Universal Transverse Mercator ticks, zone 10  
North American Datum of 1983 (NAD 83) is shown by dashed corner ticks  
The values of the shift between NAD 27 and NAD 83 for 7.5-minute intersections are obtainable from National Geodetic Survey NADCON software  
Non-National Forest System lands within the National Forest  
Inholdings may exist in other National or State reservations  
This map is not a legal land line or ownership document. Public lands are subject to change and leasing, and may have access restrictions; check with local offices. Obtain permission before entering private lands



ADJOINING 7.5' QUADRANGLES			HIGHWAYS AND ROADS	
1	2	3	Interstate	Primary highway
4	5	6	U. S.	Secondary highway
7	8	9	State	Light-duty road
10	11	12	County	Paved
13	14	15	National Forest, suitable for passenger cars	Gravel
16	17	18	National Forest, suitable for high clearance vehicles	Dirt
19	20	21	National Forest Trail	Composition unspecified
22	23	24		Unimproved; 4 wheel drive
25	26	27		Trail
28	29	30		Gate; Barrier

1 Frenchman Lake  
2 Cosumnes  
3 Seven Lakes Mountain  
4 Chilcoot  
5 Granite Peak  
6 Layton  
7 Evans Canyon  
8 Reno NW

BECKWORTH PASS, CA  
1994  
DMA 1963 1 SE - SERIES V895