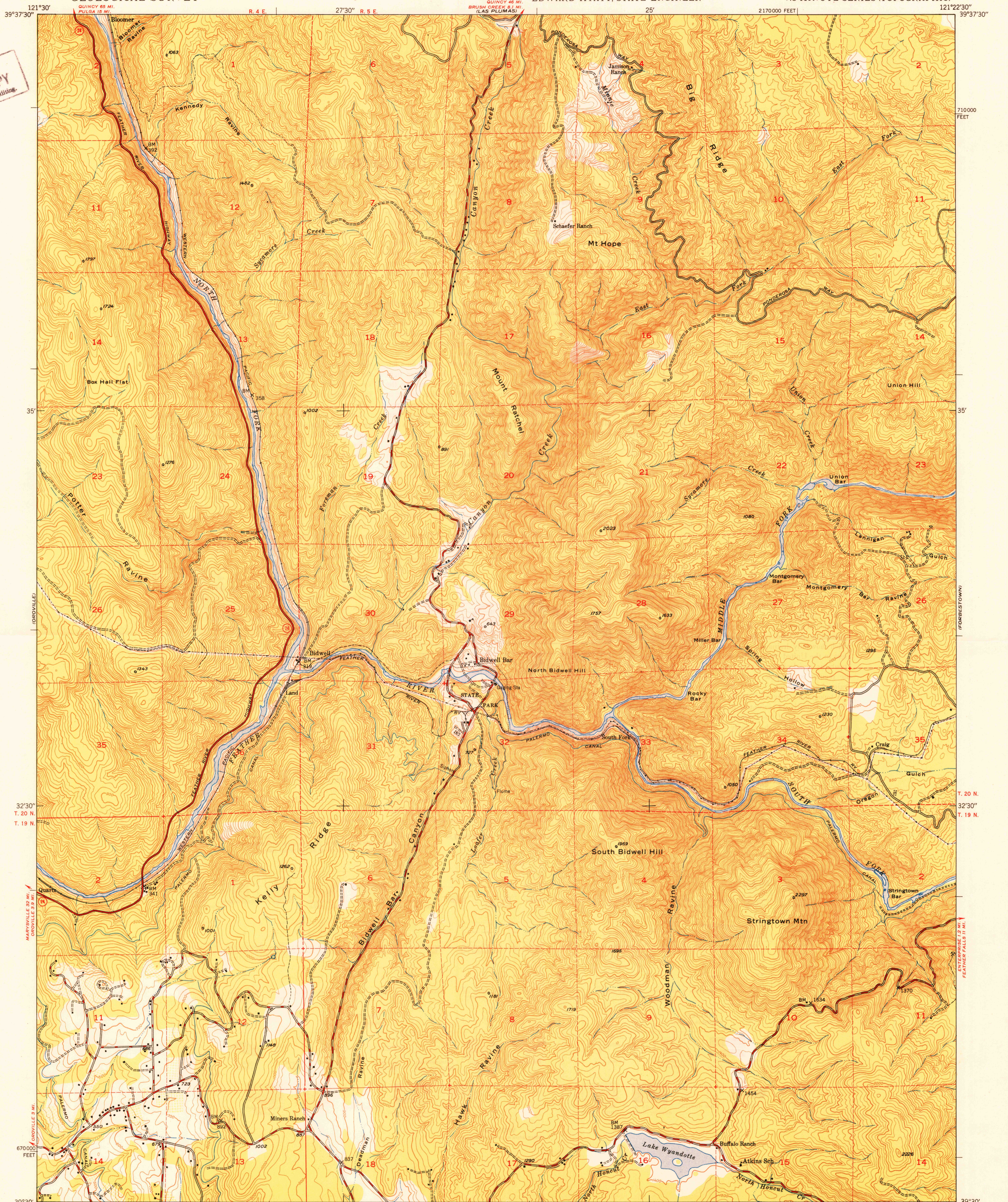


U. S. G. S.  
FILE COPY  
Inspection and Editing.



CHECKED

BRUSH CREEK

710000  
FEET

35'

T. 20 N.  
32'30"  
T. 19 N.

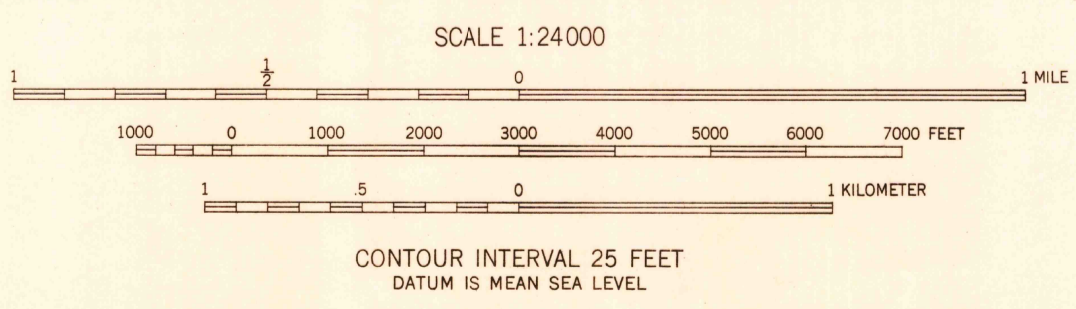
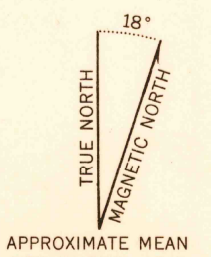
39'30"  
121°22'30"

FORBETOWN

FEATHER FALLS 11 MI.

ROCKEY

Mapped by Fairchild Aerial Surveys, Inc.  
Field inspected, edited, and published by the Geological Survey  
Control by Fairchild Aerial Surveys, Inc. and USGS  
Topography from aerial photographs by stereoplanning methods  
Aerial photographs taken 1946-1947. Field check 1947  
Polyconic projection. 1927 North American datum  
10,000-foot grid based on California coordinate system,  
zone 2  
Dashed land lines indicate approximate location  
Fairchild triangulation shown by unlabeled located object symbol



USGS  
Historical File  
Topographic Division

ROAD CLASSIFICATION

|   |                   |
|---|-------------------|
| HARD-SURFACE ALL WEATHER ROADS                  | DRY WEATHER ROADS |
| Heavy-duty — 4 LANE 12' LANE                    | Improved dirt —   |
| Medium-duty — 4 LANE 12' LANE                   | Unimproved dirt — |
| Loose-surface, graded, or narrow hard-surface — |                   |
| U. S. Route                                     | State Route       |

U. S. G. S.  
FILE COPY  
Inspection and Editing.

BIDWELL BAR, CALIF.  
N3930-W12122.5/7.5  
EDITION OF 1950