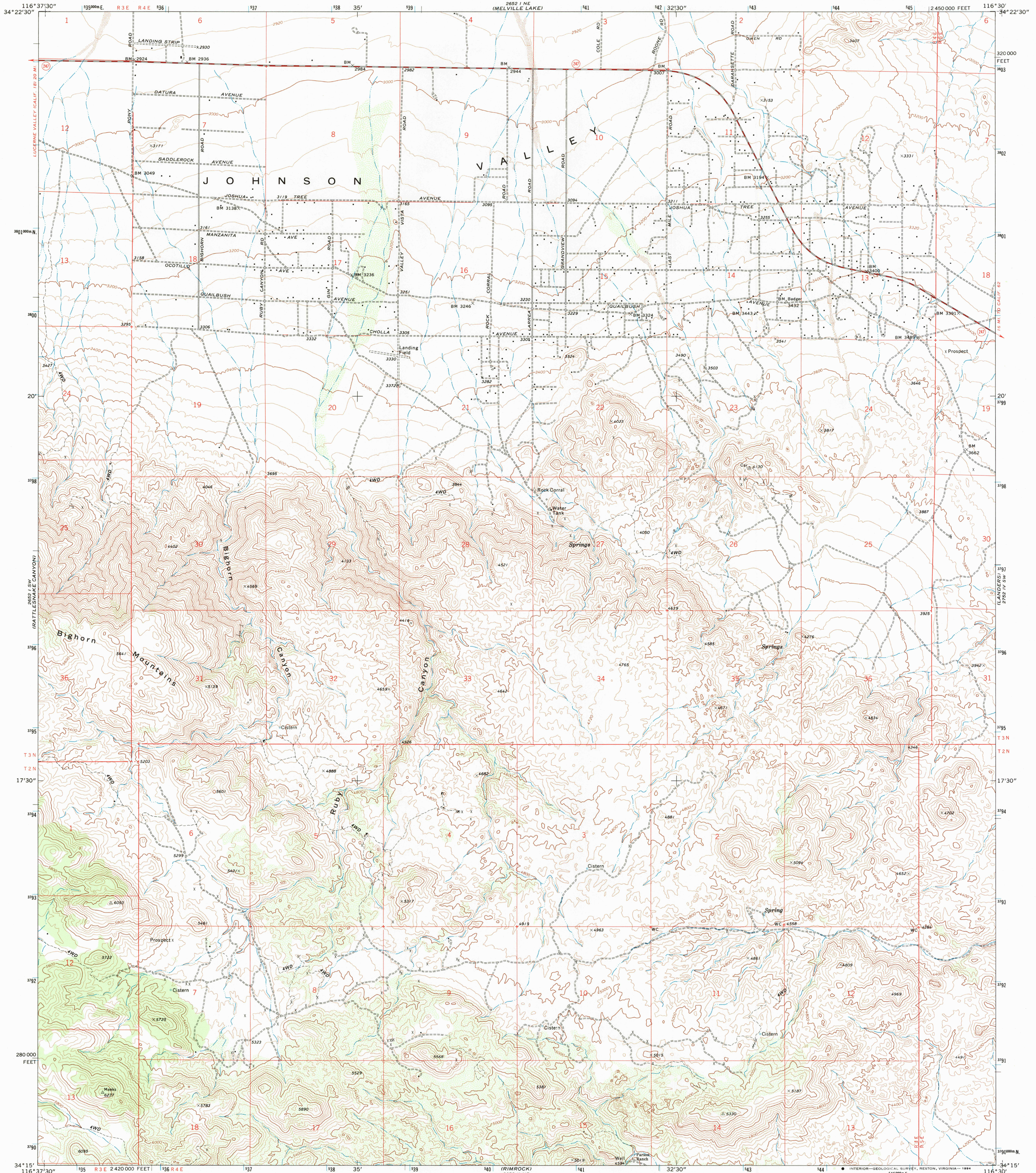


2652 I NW  
(COLEMAN SPRINGS)

UNITED STATES  
DEPARTMENT OF THE INTERIOR  
GEOLOGICAL SURVEY

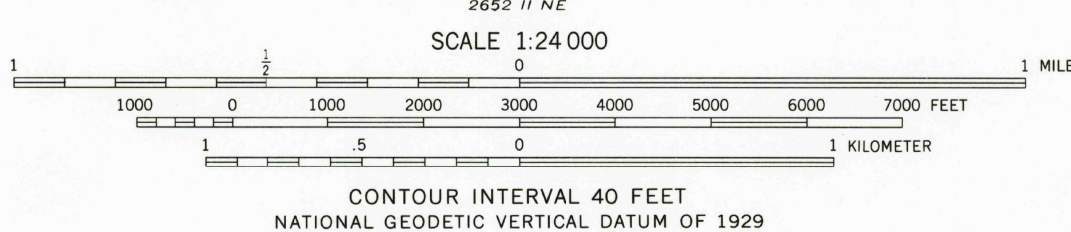
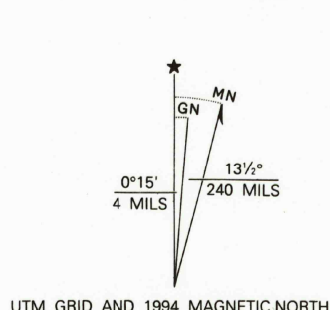
BIGHORN CANYON QUADRANGLE  
CALIFORNIA-SAN BERNARDINO CO.  
7.5 MINUTE SERIES (TOPOGRAPHIC)

2752 I NW  
(EVERSON LAKE)



2652 I NW  
(COLEMAN SPRINGS)

Produced by the United States Geological Survey in cooperation with California Department of Water Resources  
Control by USGS and NOS/NOAA  
Compiled from aerial photographs taken 1970. Field checked 1972  
North American Datum of 1927 (NAD 27). Projection and 10000-foot ticks: California Coordinate System, zone 5 (Lambert Conformal Conic)  
Blue 1000-meter Universal Transverse Mercator ticks, zone 11  
North American Datum of 1983 (NAD 83) is shown by dashed corner ticks. The values of the shift between NAD 27 and NAD 83 for 7.5-minute intersections are obtainable from National Geodetic Survey NADCON software  
Where omitted, land lines have not been established  
Photorevised from 1989 source; no major culture or drainage changes observed. Names verified 1994



THIS MAP COMPLIES WITH NATIONAL MAP ACCURACY STANDARDS  
FOR SALE BY U.S. GEOLOGICAL SURVEY  
DENVER, COLORADO 80225, OR RESTON, VIRGINIA 22092  
A FOLDER DESCRIBING TOPOGRAPHIC MAPS AND SYMBOLS IS AVAILABLE ON REQUEST



ROAD CLASSIFICATION  
Primary highway, hard surface  
Secondary highway, hard surface  
Light-duty road, hard or improved surface  
Unimproved road  
Interstate Route  
U. S. Route  
State Route

BIGHORN CANYON, CA  
34116-C5-TF-024

1972  
MINOR REVISION 1994  
DMA 2652 I SE-SERIES V895

2752 I NW  
(EVERSON LAKE)