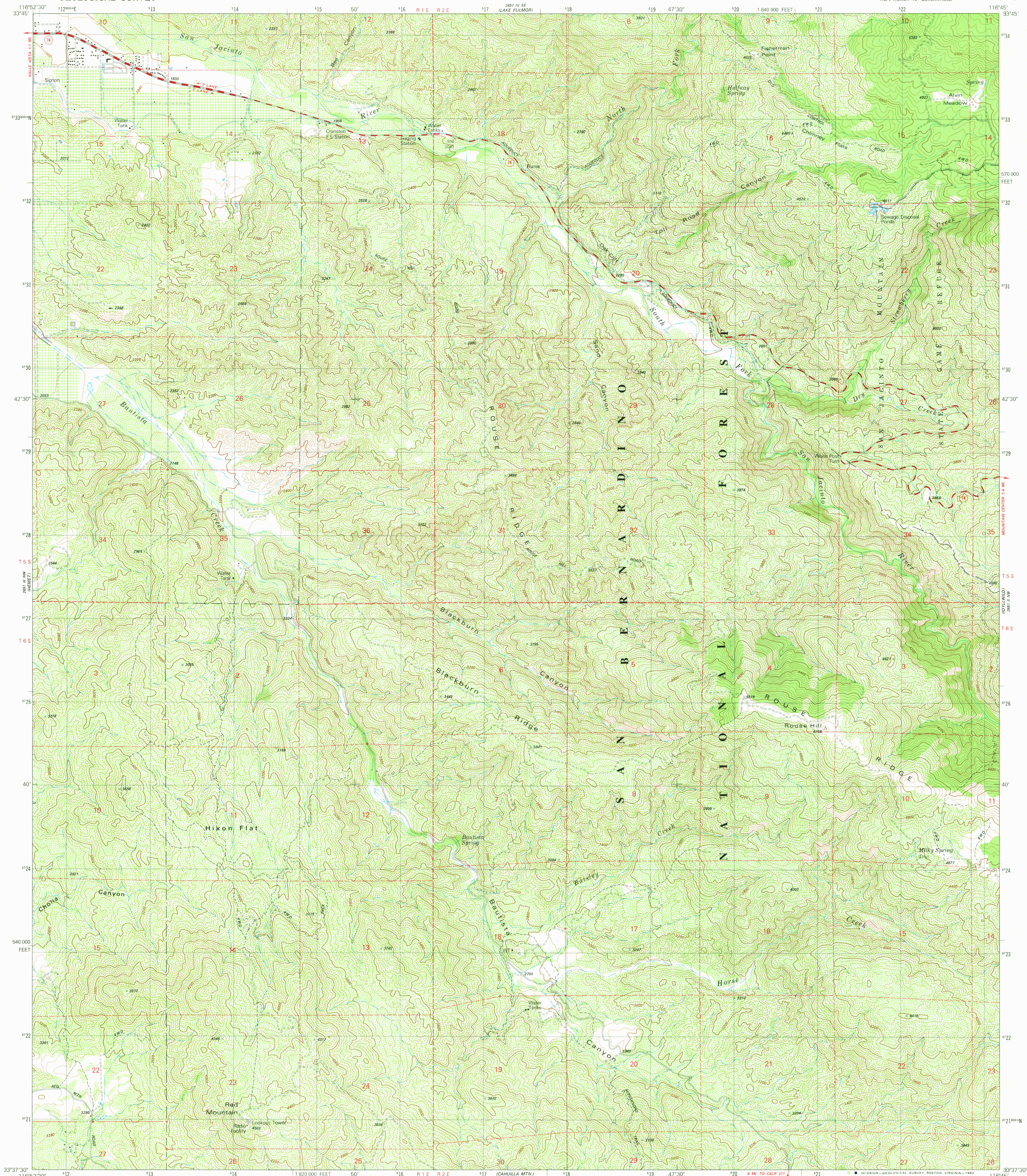


2651 IV SW
(SAN JACINTO)

UNITED STATES
DEPARTMENT OF THE INTERIOR
GEOLOGICAL SURVEY

BLACKBURN CANYON QUADRANGLE
CALIFORNIA—RIVERSIDE CO.
7.5 MINUTE SERIES (TOPOGRAPHIC)

2651 IV SW
(SAN JACINTO PEAK)



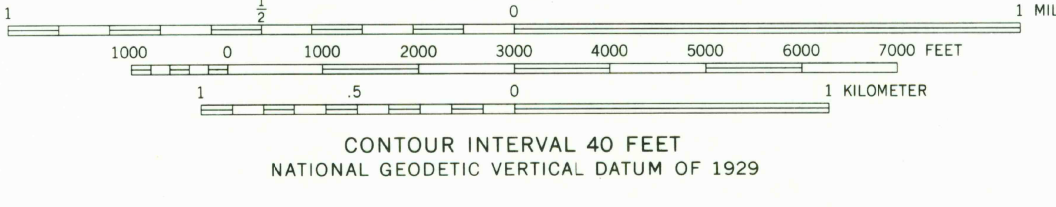
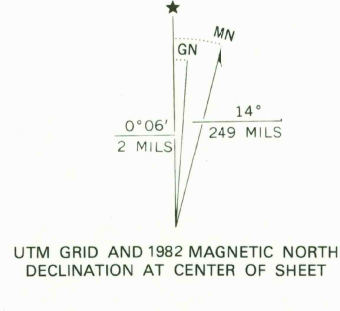
Mapped, edited, and published by the Geological Survey

Control by USGS, NOS/NOAA and USCE

Topography by photogrammetric methods from aerial photographs taken 1975. Field checked 1976
Map edited 1982

Projection and 10,000-foot grid ticks: California coordinate system, zone 6 (Lambert conformal conic)
1000-meter Universal Transverse Mercator grid, zone 11
1927 North American Datum
To place on the predicted North American Datum 1983 move the projection lines 81 meters east as shown by dashed corner ticks

There may be private inholdings within the boundaries of the National or State reservations shown on this map



ROAD CLASSIFICATION	
Primary highway, hard surface	Light-duty road, hard or improved surface
Secondary highway, hard surface	Unimproved road
Interstate Route	U. S. Route
	State Route

BLACKBURN CANYON, CALIF.
NE/4 HEMET 15' QUADRANGLE
N3337.5-W11645/7.5

1982

DMA 2651 III NE—SERIES V895

THIS MAP COMPLIES WITH NATIONAL MAP ACCURACY STANDARDS
FOR SALE BY U. S. GEOLOGICAL SURVEY, DENVER, COLORADO 80225, OR RESTON, VIRGINIA 22092
A FOLDER DESCRIBING TOPOGRAPHIC MAPS AND SYMBOLS IS AVAILABLE ON REQUEST

NOV 22 1982

2052