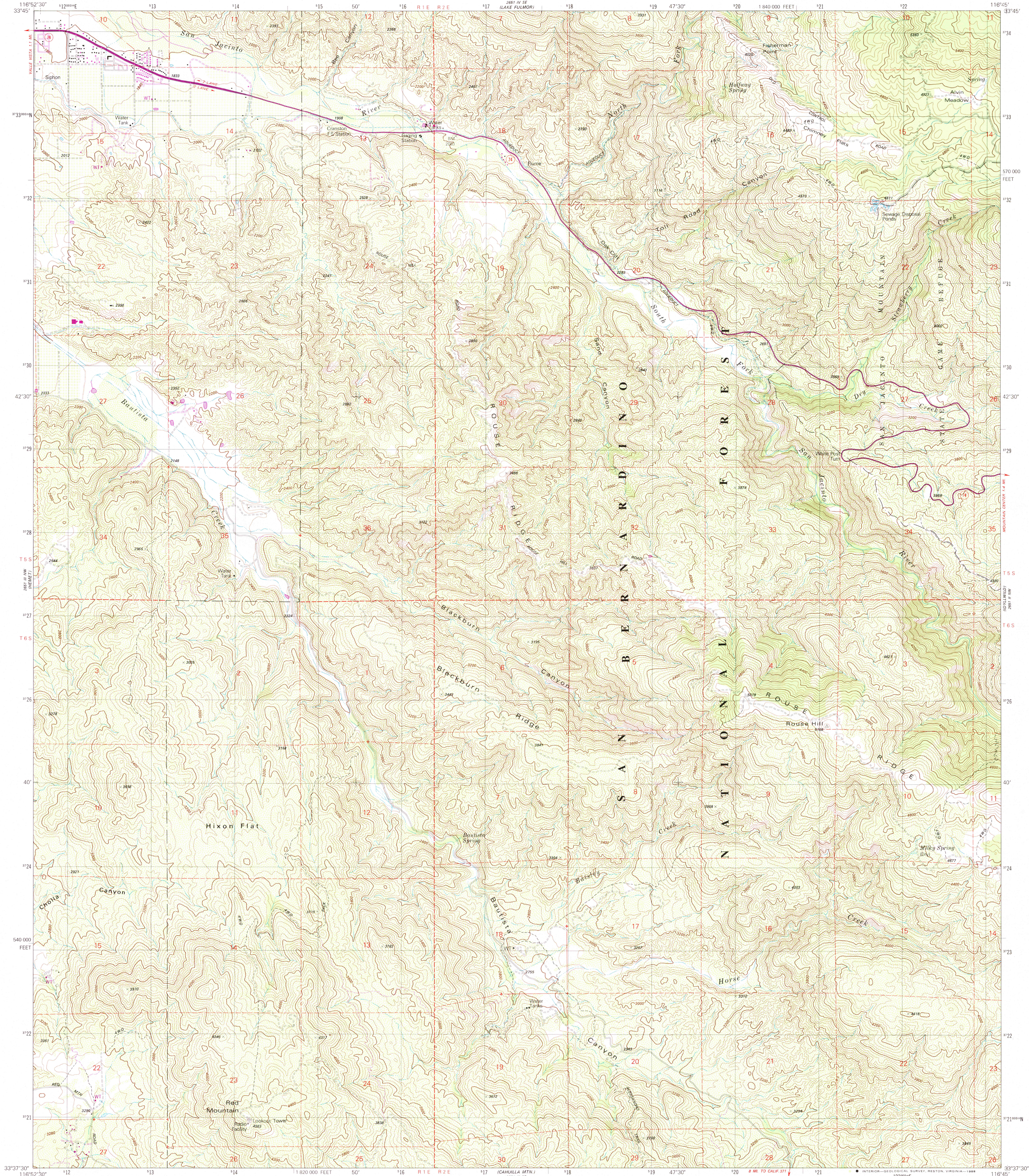


UNITED STATES
DEPARTMENT OF THE INTERIOR
GEOLOGICAL SURVEY

BLACKBURN CANYON QUADRANGLE
CALIFORNIA—RIVERSIDE CO.
7.5 MINUTE SERIES (TOPOGRAPHIC)
NE/4 HEMET 15' QUADRANGLE



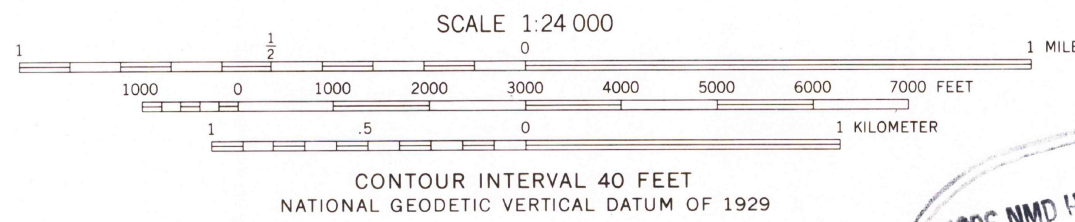
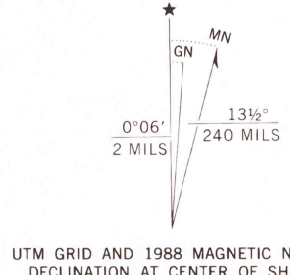
Mapped, edited, and published by the Geological Survey

Control by USGS, NOS/NOAA and USCE

Topography by photogrammetric methods from aerial
photographs taken 1975. Field checked 1976
Map edited 1982

Projection and 10,000-foot grid ticks: California coordinate
system, zone 6 (Lambert conformal conic)
1000-meter Universal Transverse Mercator grid, zone 11
1927 North American Datum
To place on the predicted North American Datum 1983
move the projection lines 81 meters east as shown by
dashed corner ticks
There may be private inholdings within the boundaries of
the National or State reservations shown on this map

Revisions shown in purple and woodland compiled from
aerial photographs taken 1985 and other source data
Partial field check by U.S. Forest Service. Map edited 1988



THIS MAP COMPLIES WITH NATIONAL MAP ACCURACY STANDARDS
FOR SALE BY U. S. GEOLOGICAL SURVEY, DENVER, COLORADO 80225, OR RESTON, VIRGINIA 22092
A FOLDER DESCRIBING TOPOGRAPHIC MAPS AND SYMBOLS IS AVAILABLE ON REQUEST

USGS NMD HISTORICAL MAP
DEC 14 1988
REC'D FILE COPY



ROAD CLASSIFICATION
Primary highway, hard surface
Secondary highway, hard surface
Light-duty road, hard or improved surface
Unimproved road
Interstate Route
U. S. Route
State Route

BLACKBURN CANYON, CALIF.
NE/4 HEMET 15' QUADRANGLE
33116-F7-TF-024

1982
PHOTOREVISED 1988
DMA 2651 III NE—SERIES V895