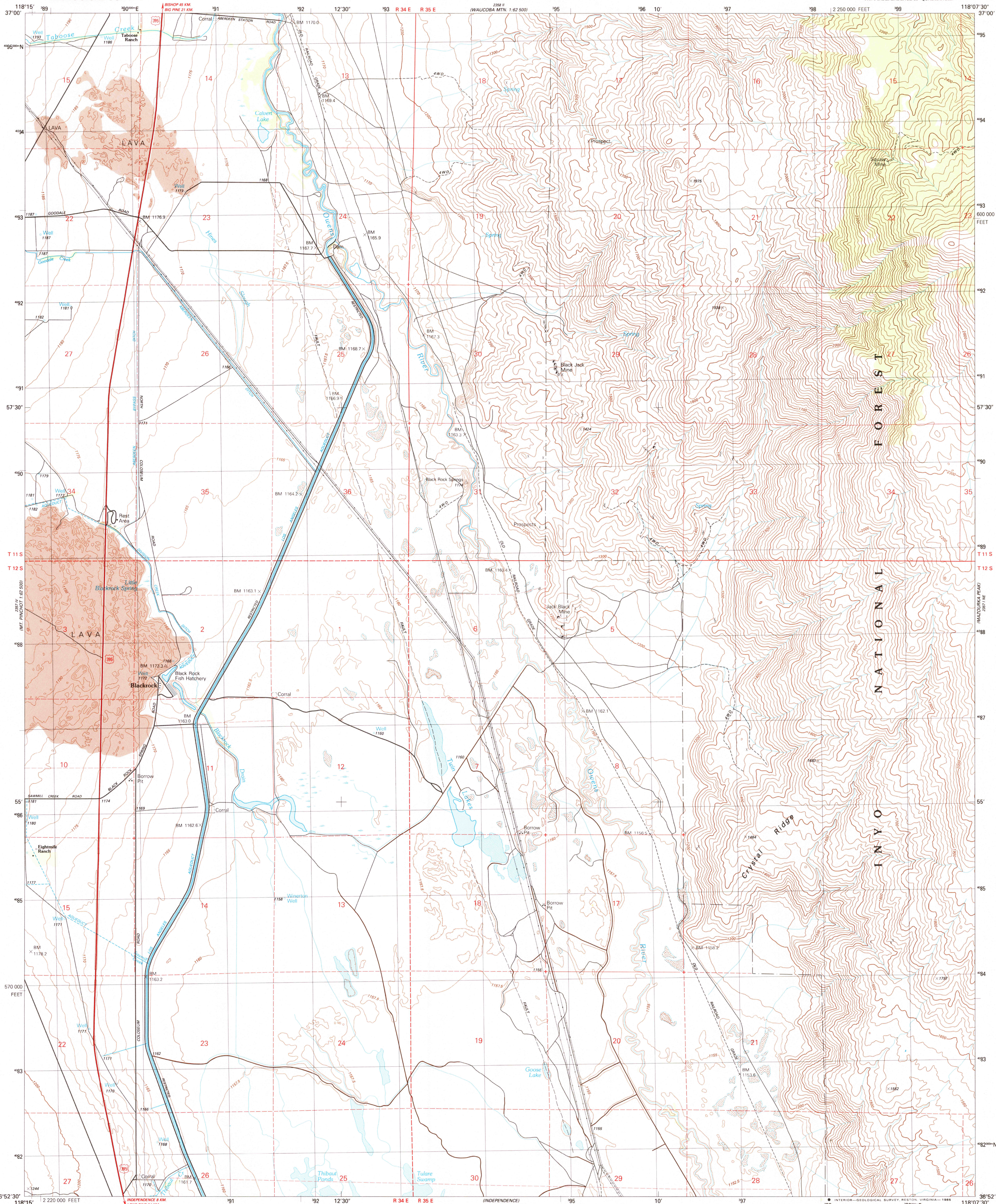


UNITED STATES
DEPARTMENT OF THE INTERIOR
GEOLOGICAL SURVEY

STATE OF CALIFORNIA
DEPARTMENT OF WATER RESOURCES

BLACKROCK QUADRANGLE
CALIFORNIA-INYO CO.
7.5 MINUTE SERIES (TOPOGRAPHIC)
NW¼ INDEPENDENCE 15' QUADRANGLE



Produced by the United States Geological Survey

Control by USGS and NOS/NOAA

Compiled by photogrammetric methods from aerial photographs taken 1978. Field checked 1979. Map edited 1982

Projection and 1000-meter grid, zone 11.

Universal Transverse Mercator

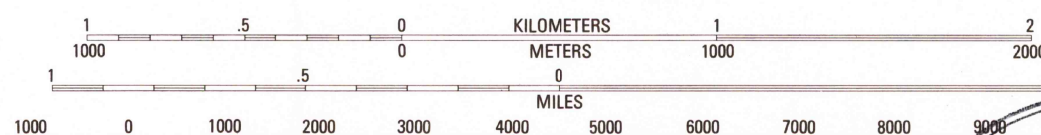
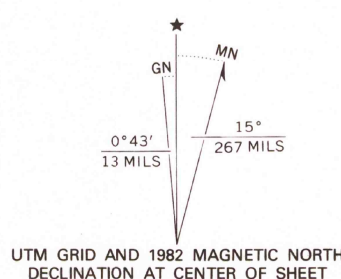
10,000-foot grid ticks based on California coordinate system, zone 4. 1927 North American Datum

To place on the predicted North American Datum 1983 move the projection lines 9 meters north and 83 meters east as shown by dashed corner ticks

Where omitted, land lines have not been established

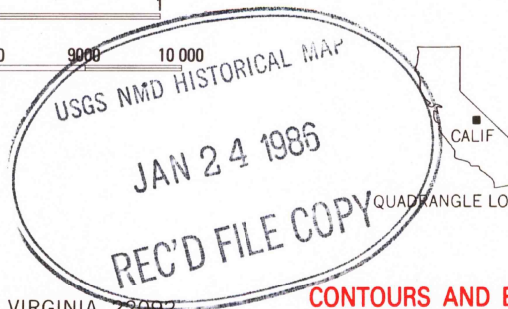
Fine red dashed lines indicate selected fence and field lines where generally visible on aerial photographs. This information is unchecked

There may be private inholdings within the boundaries of the National or State reservations shown on this map



CONTOUR INTERVAL 20 METERS
SUPPLEMENTARY CONTOUR INTERVAL 2.5 METERS
NATIONAL GEODETIC VERTICAL DATUM OF 1929
CONTROL ELEVATIONS SHOWN TO THE NEAREST 0.1 METER
TO CONVERT METERS TO FEET MULTIPLY BY 3.2808
TO CONVERT FEET TO METERS MULTIPLY BY 0.3048

THIS MAP COMPLIES WITH NATIONAL MAP ACCURACY STANDARDS
FOR SALE BY U. S. GEOLOGICAL SURVEY, DENVER, COLORADO 80225, OR RESTON, VIRGINIA 22092
A FOLDER DESCRIBING TOPOGRAPHIC MAPS AND SYMBOLS IS AVAILABLE ON REQUEST



CONTOURS AND ELEVATIONS
IN METERS

ROAD CLASSIFICATION
Primary highway, hard surface
Secondary highway, hard surface
Unimproved road
Interstate Route U. S. Route State Route

BLACKROCK, CALIF.
NW¼ INDEPENDENCE 15' QUADRANGLE
36118-H2-TM-024

1982

DMA 2357 1 NW-SERIES V895