

Produced by the United States Geological Survey in cooperation with California Department of Water Resources

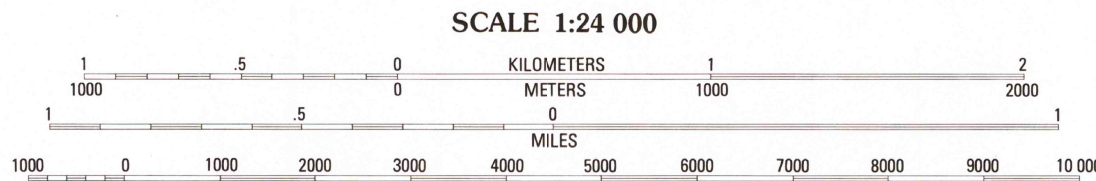
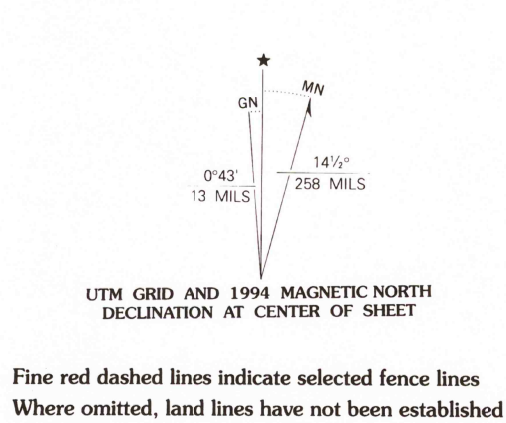
Control by USGS and NOS/NOAA

Compiled from imagery taken 1978. Photoinspected using imagery dated 1992; no major culture or drainage changes observed. PLSS and survey control current as of 1979. Boundaries and names verified 1994.

North American Datum of 1927 (NAD 27). Projection and 10 000-foot ticks: California Coordinate System, zone 4 (Lambert Conformal Conic). Blue 1000-meter Universal Transverse Mercator ticks, zone 11.

North American Datum of 1983 (NAD 83) is shown by dashed corner ticks. The values of the shift between NAD 27 and NAD 83 for 7.5-minute intersections are obtainable from National Geodetic Survey NADCON software.

There may be private inholdings within the boundaries of the National or State reservations shown on this map.



CONTOUR INTERVAL 20 METERS  
SUPPLEMENTARY CONTOUR INTERVAL 2.5 METERS  
NATIONAL GEODETIC VERTICAL DATUM OF 1929  
CONTROL ELEVATIONS SHOWN TO THE NEAREST 0.1 METER  
OTHER ELEVATIONS SHOWN TO THE NEAREST METER  
TO CONVERT METERS TO FEET MULTIPLY BY 3.2808  
TO CONVERT FEET TO METERS MULTIPLY BY 0.3048

THIS MAP COMPLIES WITH NATIONAL MAP ACCURACY STANDARDS  
FOR SALE BY U.S. GEOLOGICAL SURVEY, DENVER, COLORADO 80225  
OR RESTON, VIRGINIA 22092

A FOLDER DESCRIBING TOPOGRAPHIC MAPS AND SYMBOLS IS AVAILABLE ON REQUEST

ROAD CLASSIFICATION

Primary highway, hard surface ..... Light-duty road, hard or improved surface .....

Secondary highway, hard surface ..... Unimproved road .....

Interstate Route U. S. Route State Route

QUADRANGLE LOCATION

1	2	3
4	5	6
7	8	9

ADJOINING 7.5' QUADRANGLE NAMES

CONTOURS AND ELEVATIONS IN METERS

USGS MHO HISTORICAL MAP ARCHIVES  
JAN 18 1995  
REC'D FILE COPY

BLACKROCK, CA  
36118-H2-TM-024  
1992  
DMA 2357 I NW-SERIES V895