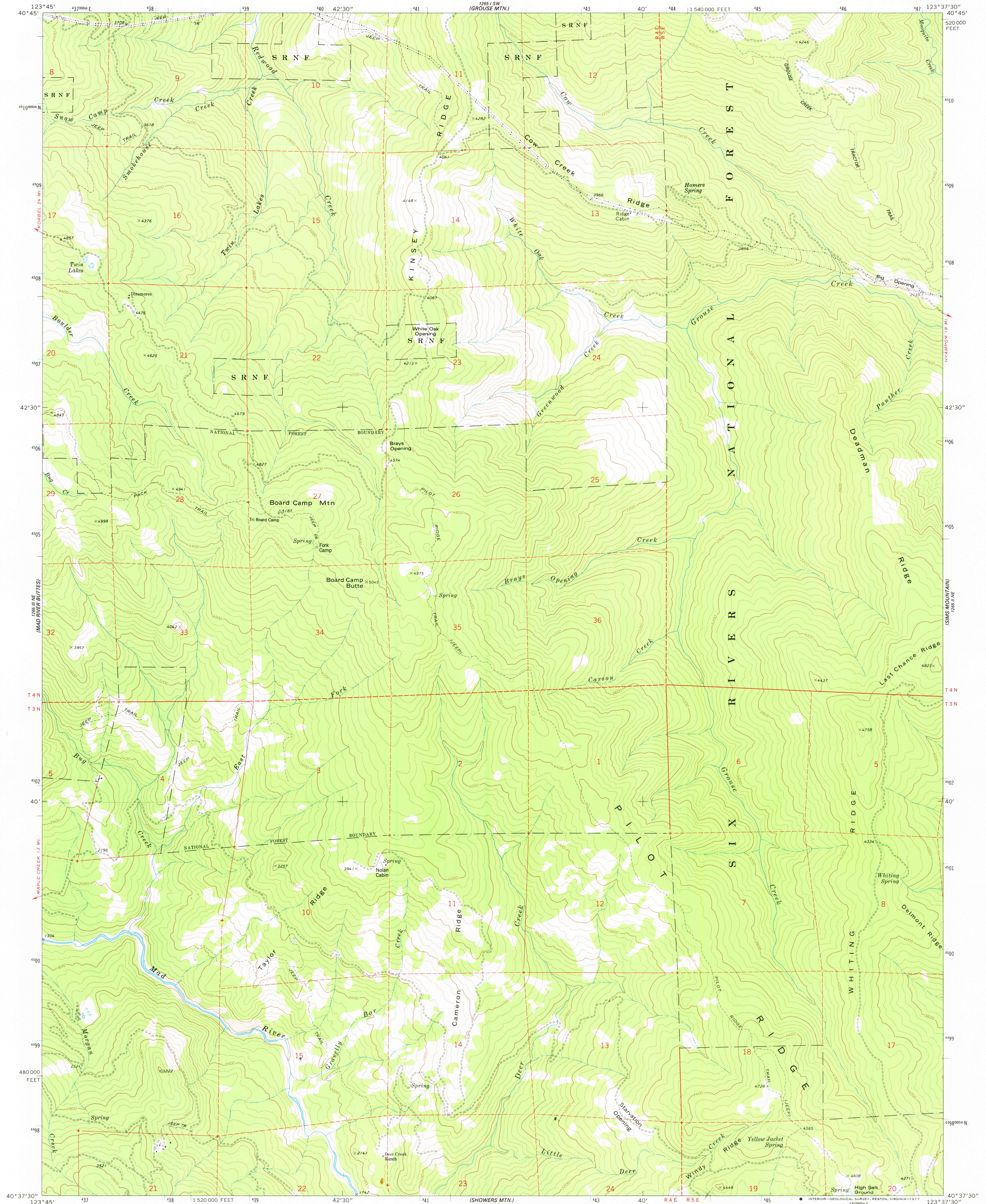
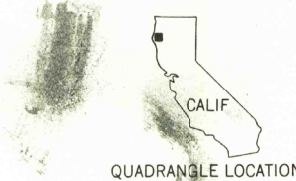
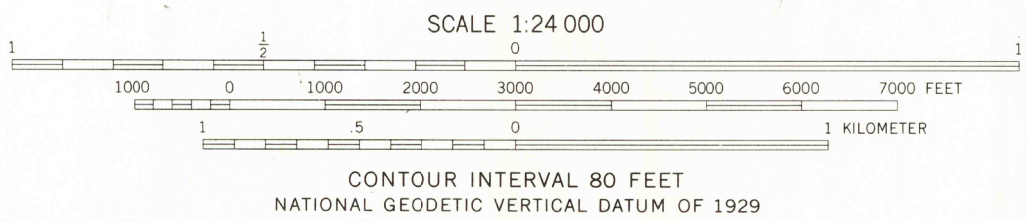
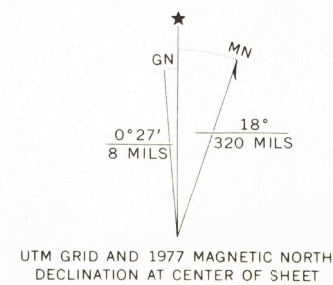


UNITED STATES  
DEPARTMENT OF THE INTERIOR  
GEOLOGICAL SURVEY

BOARD CAMP MTN. QUADRANGLE  
CALIFORNIA—HUMBOLDT CO.  
7.5 MINUTE SERIES (TOPOGRAPHIC)  
NW 1/4 PILOT CREEK 15' QUADRANGLE



Mapped, edited, and published by the Geological Survey  
Control by USGS and NOS/NOAA  
Topography by photogrammetric methods from aerial  
photographs taken 1968 and 1972. Field checked 1973  
Projection and 10,000-foot grid ticks: California coordinate  
system, zone 1 (Lambert conformal conic)  
1000-meter Universal Transverse Mercator grid ticks,  
zone 10, shown in blue. 1927 North American datum  
Certain land lines are omitted because of insufficient data



ROAD CLASSIFICATION  
Primary highway, hard surface  
Secondary highway, hard surface  
Light-duty road, hard or improved surface  
Unimproved road  
Interstate Route  
U. S. Route  
State Route

BOARD CAMP MTN., CALIF.  
NW 1/4 PILOT CREEK 15' QUADRANGLE  
N4037.5—W12337.5/7.5

1977

AMS 1265 II NW—SERIES V895

FOR SALE BY U. S. GEOLOGICAL SURVEY, DENVER, COLORADO 80225, OR RESTON, VIRGINIA 22092  
A FOLDER DESCRIBING TOPOGRAPHIC MAPS AND SYMBOLS IS AVAILABLE ON REQUEST

FEB 0 8 1978

3450