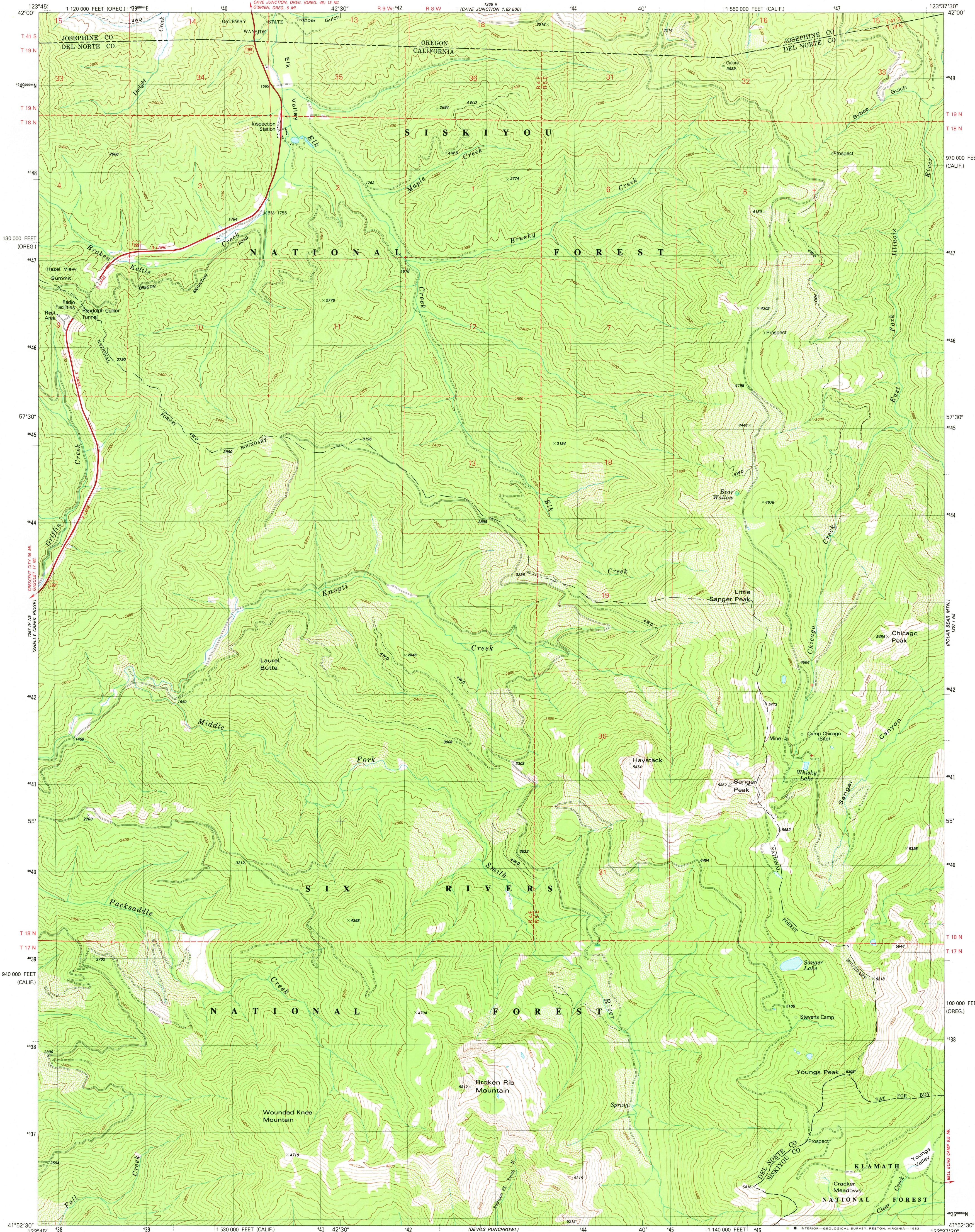


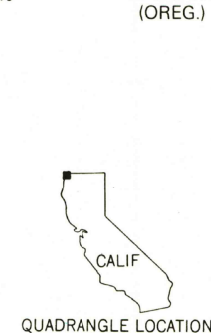
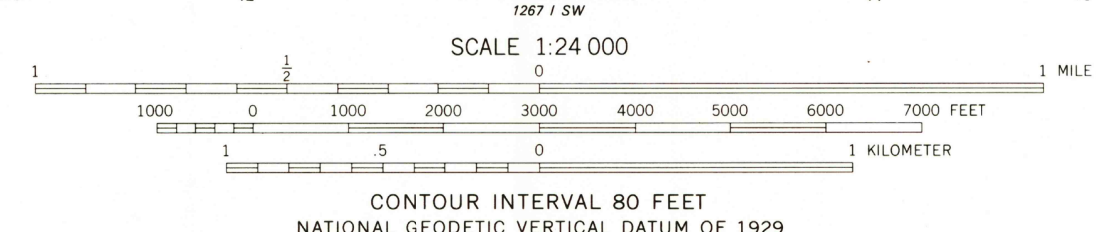
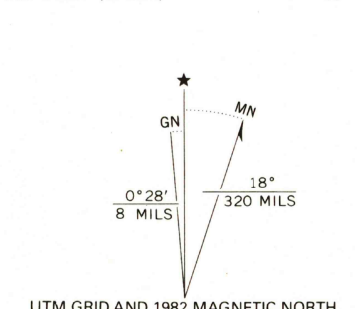
UNITED STATES
DEPARTMENT OF THE INTERIOR
GEOLOGICAL SURVEY

BROKEN RIB MTN. QUADRANGLE
CALIFORNIA-OREGON
7.5 MINUTE SERIES (TOPOGRAPHIC)

NW/4 PRESTON PEAK 15' QUADRANGLE



Mapped, edited, and published by the Geological Survey
Control by USGS and NOS/NOAA
Topography by photogrammetric methods from aerial photographs
taken 1975. Field checked 1977. Map edited 1982
Projection: California coordinate system, zone 1
(Lambert conformal conic)
10,000-foot grid ticks based on California coordinate system,
zone 1 and Oregon coordinate system, south zone
1000-meter Universal Transverse Mercator grid, zone 10
1927 North American Datum
To place on the predicted North American Datum 1983
move the projection lines 21 meters north and
96 meters east as shown by dashed corner ticks
Certain land lines are omitted because of insufficient data
There may be private inholdings within the boundaries of
the National or State reservation shown on this map



ROAD CLASSIFICATION
Primary highway, hard surface
Secondary highway, hard surface
Unimproved road
Interstate Route
U. S. Route
State Route

BROKEN RIB MTN., CALIF-OREG.
NW/4 PRESTON PEAK 15' QUADRANGLE
N4152.5-W12337.5/7.5

1982
DMA 1267 1 NW-SERIES V895

JUL 7 1983

2150