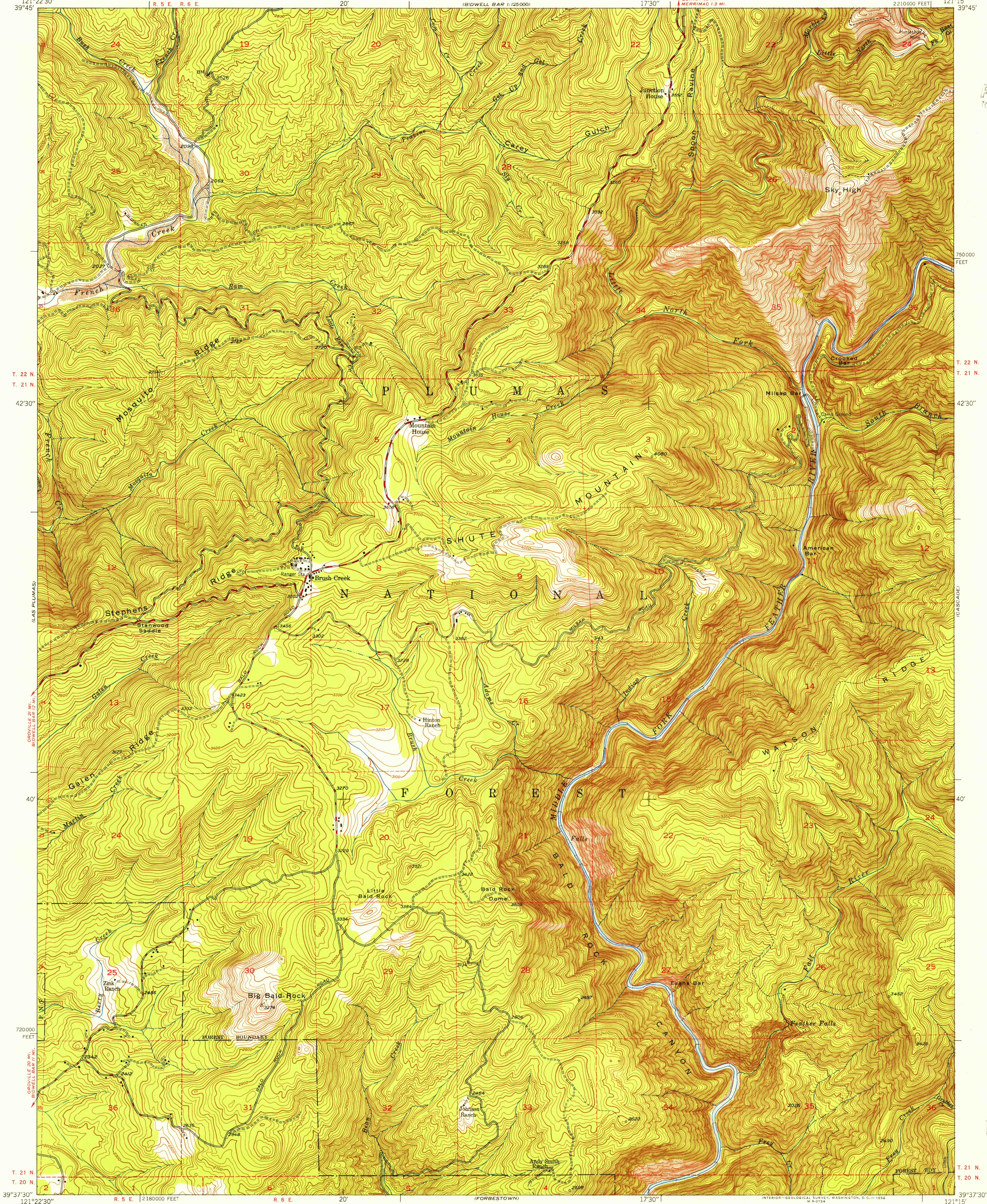


121°22'30" 39°45' R. 5 E. R. 6 E. 20' (BIDWELL BAR 1:125000) 17'30" QUINCY 32 MI. MERRIMAC 12 MI. 2210000 FEET 121°15' 39°45'

U.S.G.S.
FILE COPY
TOPOGRAPHIC DIVISION



75000
FEET

T. 22 N.

T. 21 N.

42'30"

(CASCADER)

40'

T. 21 N.

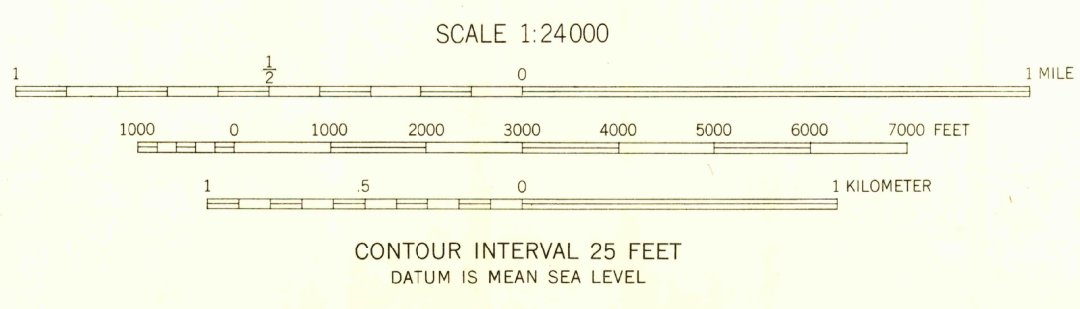
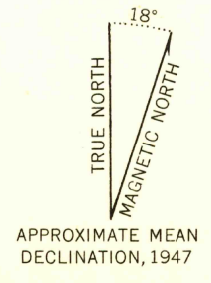
T. 20 N.

39°37'30"

121°15'

(CLIPPER MILLS)

Mapped by Fairchild Aerial Surveys, Inc.
Field inspected, edited, and published by the Geological Survey
Control by Fairchild Aerial Surveys, Inc.,
USGS, and USC&GS
Topography from aerial photographs by stereoplanograph methods
Aerial photographs taken 1946-1947. Field check 1947
Polyconic projection. 1927 North American datum
10,000-foot grid based on California coordinate system,
zone 2
Dashed land lines indicate approximate location
Fairchild triangulation shown by unlabeled located object symbol



USCS
Historical File
Topographic Division

ROAD CLASSIFICATION

Heavy-duty	LANE IS LANE	Improved dirt	DRY WEATHER ROADS
Medium-duty	LANE IS LANE	Unimproved dirt	
Loose-surface, graded, or narrow hard-surface			
U. S. Route		State Route	

BRUSH CREEK, CALIF
N3937.5-W12115/7.5