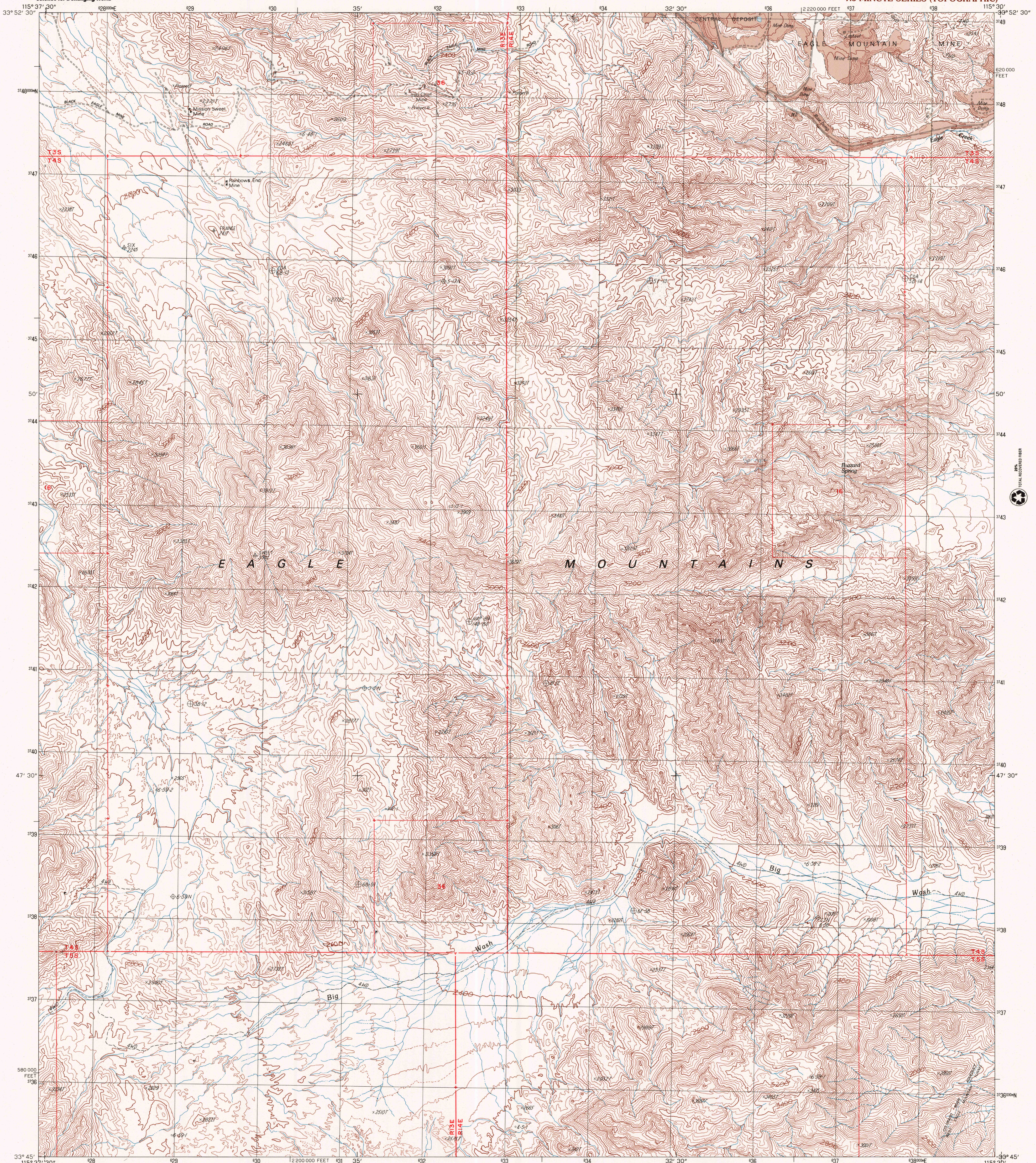




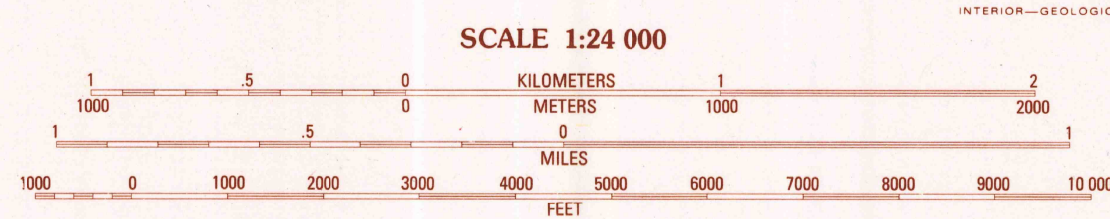
U.S. DEPARTMENT OF THE INTERIOR  
U.S. GEOLOGICAL SURVEY

BUZZARD SPRING QUADRANGLE  
CALIFORNIA—RIVERSIDE CO.  
7.5 MINUTE SERIES (TOPOGRAPHIC)



PRODUCED BY THE UNITED STATES GEOLOGICAL SURVEY  
CONTROL BY ..... USGS, NOS NOAA  
COMPILED FROM AERIAL PHOTOGRAPHS TAKEN ..... 1956  
FIELD CHECKED ..... 1963  
LIMITED REVISION FROM AERIAL PHOTOGRAPHS TAKEN ..... 1984  
FIELD CHECKED ..... 1986, MAP EDITED ..... 1986  
PROJECTION ..... LAMBERT CONFORMAL CONIC  
GRID: 1000-METER UNIVERSAL TRANSVERSE MERCATOR, ZONE 11  
UTM GRID DECLINATION ..... CALIFORNIA, ZONE 6  
10000-FOOT STATE GRID TICS ..... 1983  
1986 MAGNETIC NORTH DECLINATION ..... 13°30' EAST  
VERTICAL DATUM ..... NATIONAL GEODETIC VERTICAL DATUM OF 1929  
HORIZONTAL DATUM ..... 1927 NORTH AMERICAN DATUM  
To place on the predicted North American Datum of 1983,  
move the projection lines as shown by dashed corner ticks  
(1 meter south and 76 meters east)  
There may be private inholdings within the boundaries of any  
Federal and State Reservations shown on this map.  
Public Land Survey System is shown as published in 1963 and  
verified or supplemented in 1985.  
Where omitted, land lines have not been established

**PROVISIONAL MAP**  
Produced from original  
manuscript drawings. Infor-  
mation shown as of date of  
field check.



SCALE 1:24 000  
CONTOUR INTERVAL 40 FEET  
SUPPLEMENTARY CONTOUR INTERVAL 20 FEET  
To convert meters to feet multiply by 3.2808  
To convert feet to meters multiply by 0.3048

THIS MAP COMPLIES WITH NATIONAL MAP ACCURACY STANDARDS  
FOR SALE BY U.S. GEOLOGICAL SURVEY  
P.O. BOX 25286, DENVER, COLORADO 80225  
A FOLDER DESCRIBING TOPOGRAPHIC MAPS AND SYMBOLS IS AVAILABLE ON REQUEST

1	2	3	1	San Bernardino
2			2	Wash
3			3	Placer Canyon
4			4	Pinto Wells
5			5	Compa Well
6			6	Victory Pass
7			7	Hayfield
8			8	Hayfield Spring
				Desert Center

ADJOINING 7.5 QUADRANGLE NAMES

**ROAD LEGEND**  
Improved Road.....  
Unimproved Road.....  
Trail.....  
Interstate Route.....  
U.S. Route.....  
State Route.....

**BUZZARD SPRING, CALIF.**  
PROVISIONAL EDITION 1986

33115-G5-TF-024

