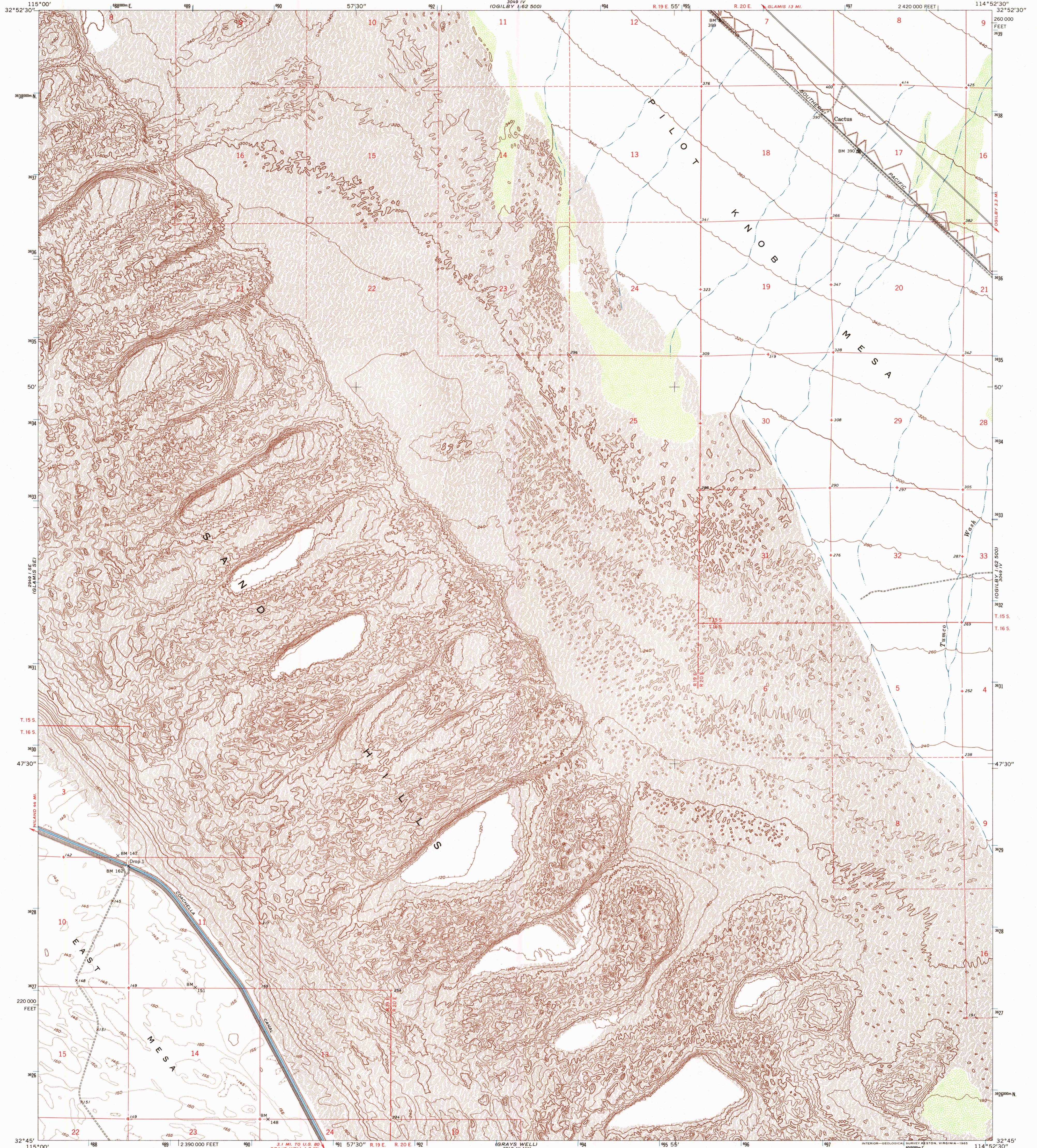


249 N.E.
(GLAMIS)

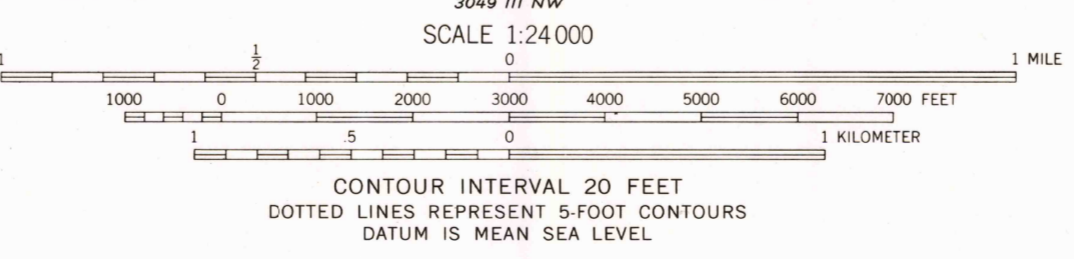
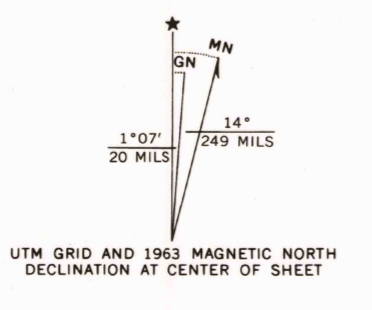
UNITED STATES
DEPARTMENT OF THE INTERIOR
GEOLOGICAL SURVEY

CACTUS QUADRANGLE
CALIFORNIA-IMPERIAL CO.
7.5 MINUTE SERIES (TOPOGRAPHIC)
SW/4 OOLBY 15' QUADRANGLE

3049 IV
(OOLBY 1:62 500)



Mapped, edited, and published by the Geological Survey in cooperation with California Department of Water Resources
Control by USGS, USC&GS, USCE, and U.S. Bureau of Reclamation
Topography by photogrammetric methods from aerial photographs taken 1948 and planetable surveys 1953. Revised from aerial photographs taken 1961. Field checked 1963
Polyconic projection. 1927 North American datum
10,000-foot grid based on California coordinate system, zone 6
1000-meter Universal Transverse Mercator grid ticks, zone 11, shown in blue
Where omitted, land lines have not been established



CONTOUR INTERVAL 20 FEET
DOTTED LINES REPRESENT 5-FOOT CONTOURS
DATUM IS MEAN SEA LEVEL



ROAD CLASSIFICATION
Light-duty _____ Unimproved dirt _____

THIS MAP COMPLIES WITH NATIONAL MAP ACCURACY STANDARDS
FOR SALE BY U.S. GEOLOGICAL SURVEY
DENVER, COLORADO 80225, OR RESTON, VIRGINIA 22092
A FOLDER DESCRIBING TOPOGRAPHIC MAPS AND SYMBOLS IS AVAILABLE ON REQUEST

CACTUS, CALIF.
SW/4 OOLBY 15' QUADRANGLE
N3245-W11452.5/7.5
1963
AMS 3049 IV SW-SERIES V895

