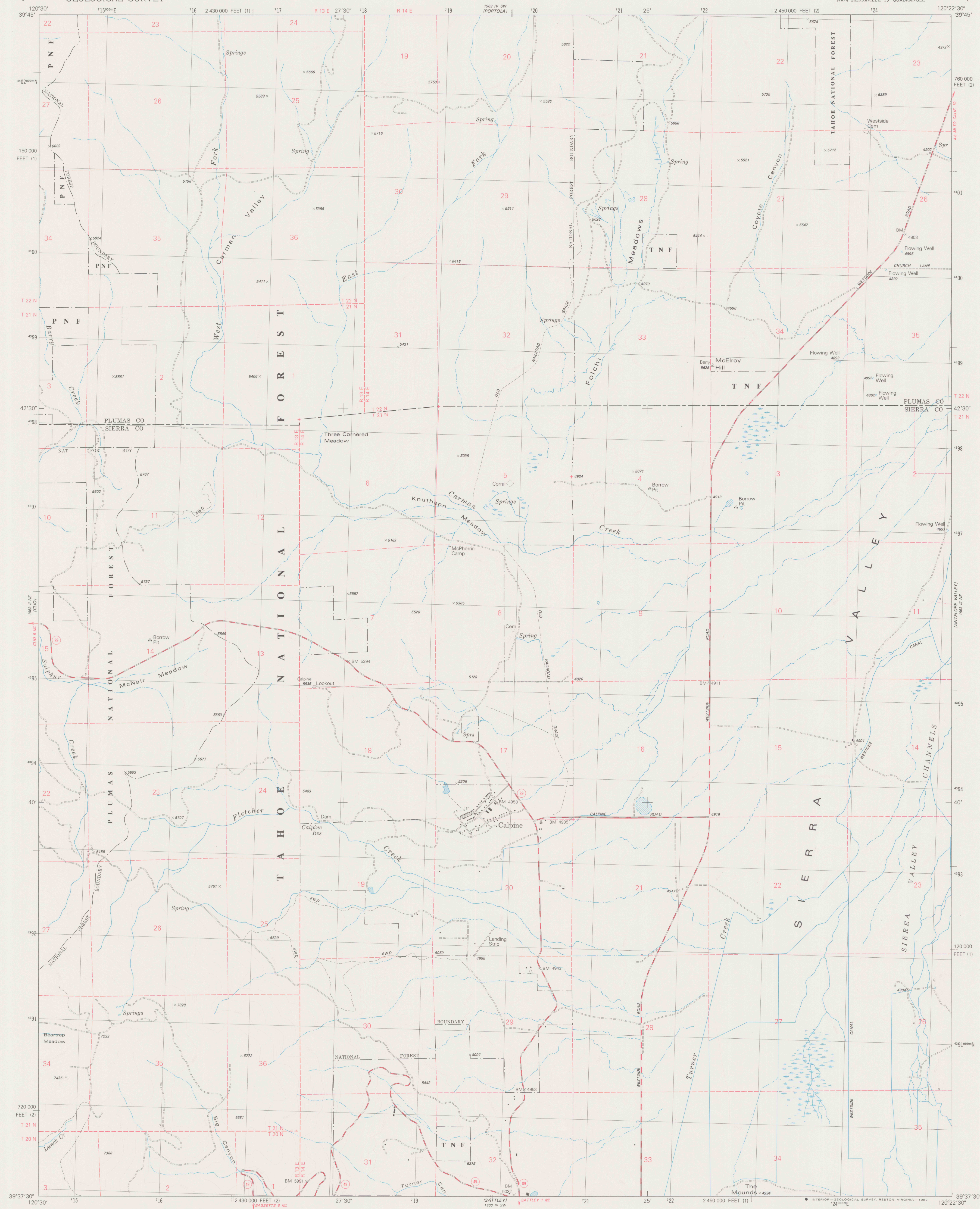
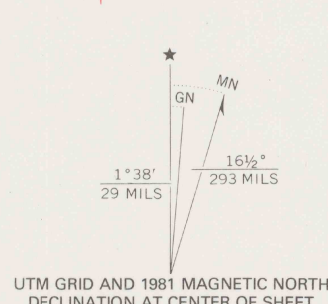


UNITED STATES
DEPARTMENT OF THE INTERIOR
GEOLOGICAL SURVEY

CALPINE QUADRANGLE
CALIFORNIA
7.5 MINUTE SERIES (TOPOGRAPHIC)
NW/4 SIERRA VALLEY 15' QUADRANGLE



Mapped, edited, and published by the Geological Survey
Control by USGS and NOS/NOAA
Topography by photogrammetric methods from aerial photographs
taken 1974. Field checked 1975. Map edited 1981
Projection: California coordinate system, zone 2
(Lambert conformal conic)
10,000-foot grid ticks based on California coordinate
system, zones 2 and 1
1000-meter Universal Transverse Mercator grid, zone 10
1927 North American Datum
To place on the predicted North American Datum 1983
move the projection lines 15 meters north and
88 meters east as shown by dashed corner ticks
Where omitted, land lines have not been established
There may be private inholdings within the boundaries of
the National or State reservations shown on this map



SCALE 1:24 000
1 1000 2000 3000 4000 5000 6000 7000 FEET
1 KILOMETER
CONTOUR INTERVAL 40 FEET
SUPPLEMENTARY CONTOUR INTERVAL 5 FEET
NATIONAL GEODETIC VERTICAL DATUM OF 1929



ROAD CLASSIFICATION
Primary highway, hard surface
Secondary highway, hard surface
Light-duty road, hard or improved surface
Unimproved road
Interstate Route
U. S. Route
State Route

CALPINE, CALIF.
NW/4 SIERRA VALLEY 15' QUADRANGLE
N3937.5-W12022.5/7.5
1981
DMA 1963 III NW-SERIES V895

DO NOT CIRCULATE

REFERENCE
R.L.
3700
Var
U5
7.5
ed. 1981
rep. 1982 pp