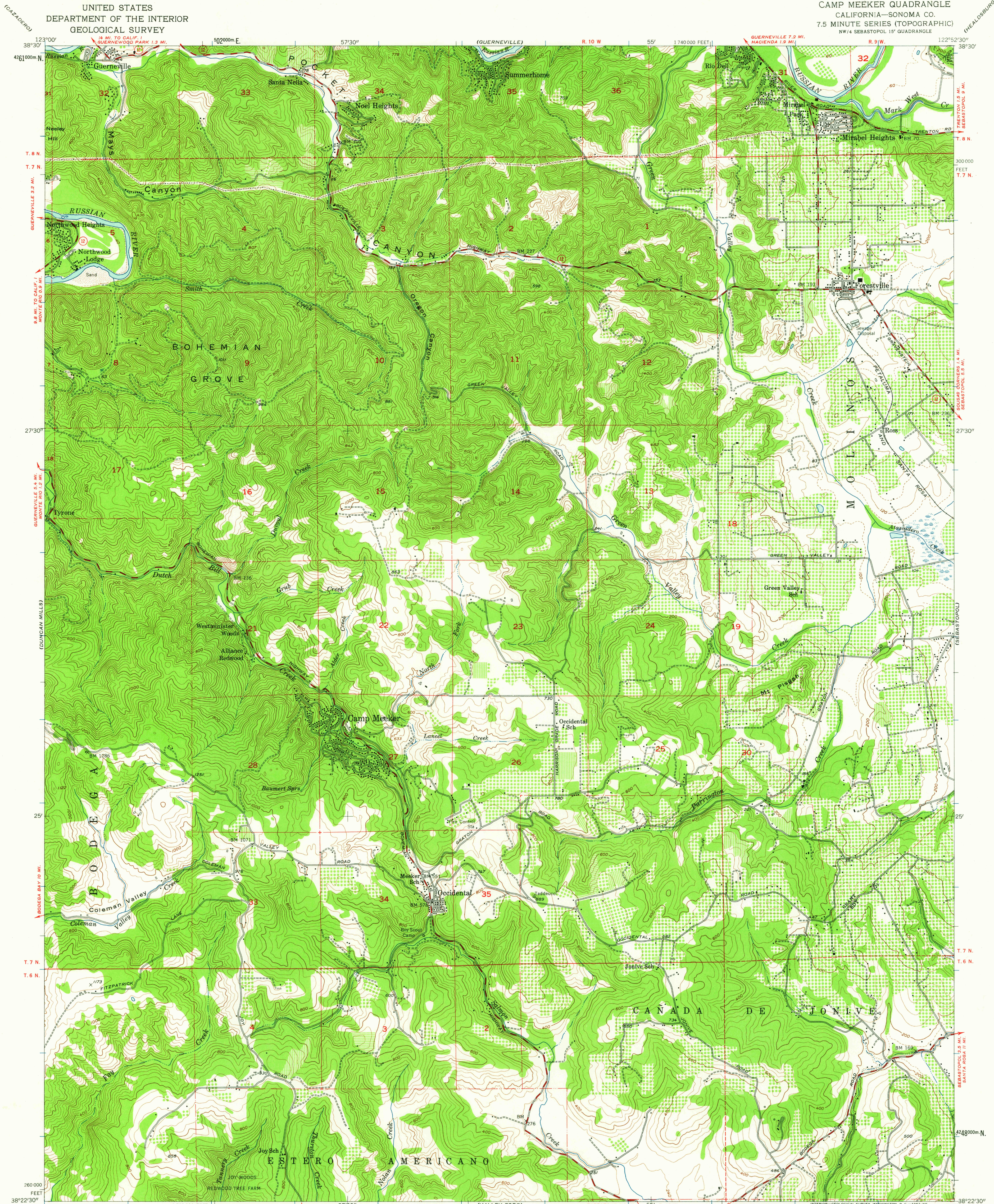


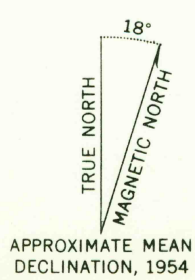
UNITED STATES
DEPARTMENT OF THE INTERIOR
GEOLOGICAL SURVEY

CAMP MEEKER QUADRANGLE
CALIFORNIA—SONOMA CO.
7.5 MINUTE SERIES (TOPOGRAPHIC)
NW 1/4 SEBASTOPOL 15' QUADRANGLE

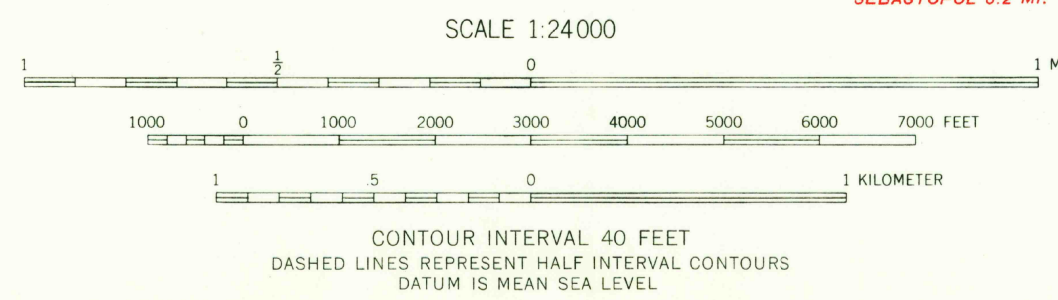


Mapped, edited, and published by the Geological Survey

Control by USGS and USC&GS
Topography from aerial photographs by multiplex methods
Aerial photographs taken 1952. Field check 1954
Polyconic projection, 1927 North American datum
10,000-foot grid based on California coordinate system, zone 2
Dashed land lines indicate approximate locations
Unchecked elevations are shown in brown
1000-meter Universal Transverse Mercator grid ticks,
zone 10, shown in blue



APPROXIMATE MEAN
DECLINATION, 1954



THIS MAP COMPLIES WITH NATIONAL MAP ACCURACY STANDARDS
FOR SALE BY U. S. GEOLOGICAL SURVEY, DENVER 25, COLORADO OR WASHINGTON 25, D. C.
A FOLDER DESCRIBING TOPOGRAPHIC MAPS AND SYMBOLS IS AVAILABLE ON REQUEST

USGS
Historical File
Topographic Division



QUADRANGLE LOCATION

ROAD CLASSIFICATION
Medium-duty ——— Light-duty ———
Unimproved dirt ———
Slate Route —○—

CAMP MEEKER, CALIF.
NW 1/4 SEBASTOPOL 15' QUADRANGLE
N 3822.5—W 12252.5/7.5

1954

SEP 7 5 1962

4975