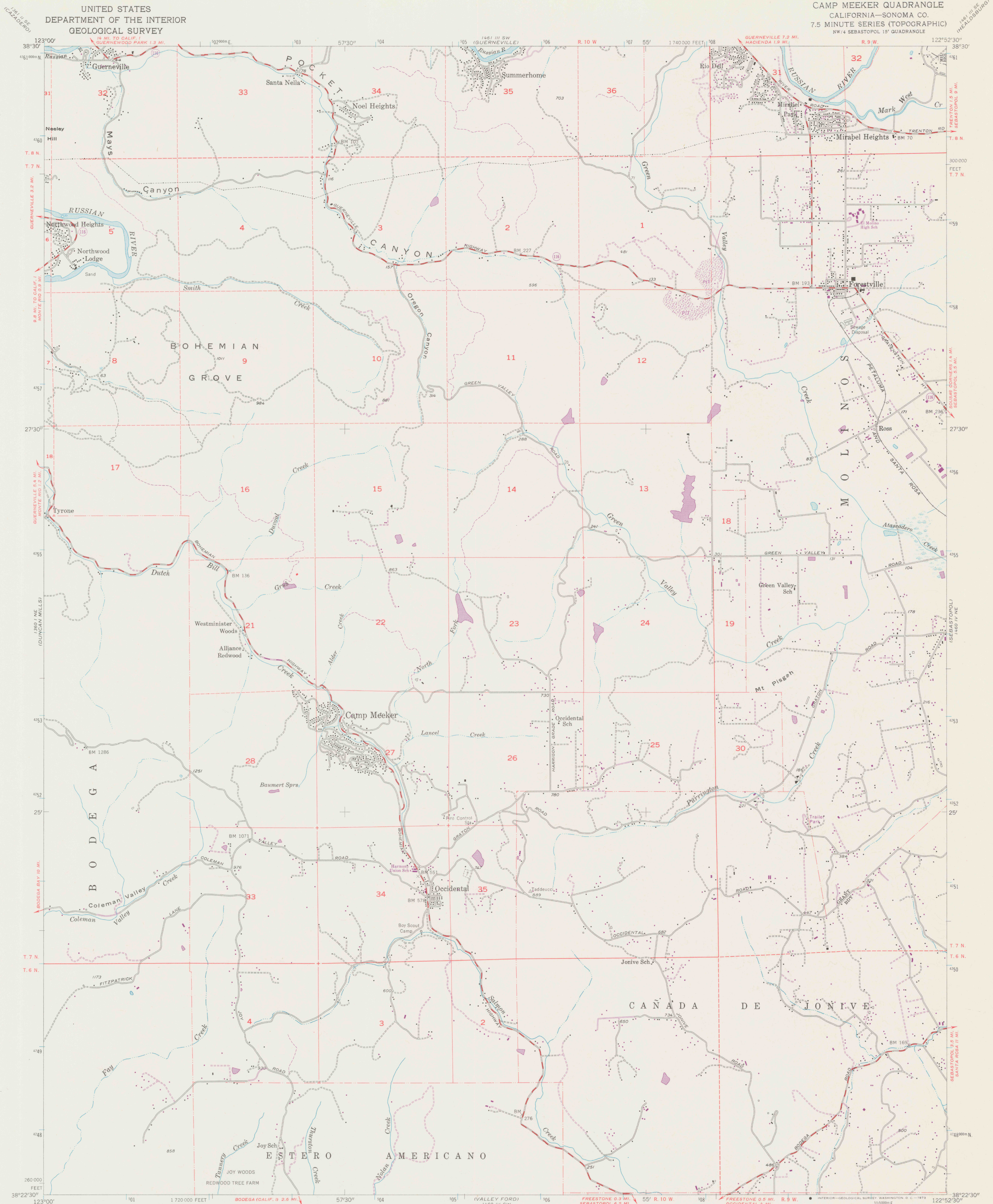


UNITED STATES  
DEPARTMENT OF THE INTERIOR  
GEOLOGICAL SURVEY

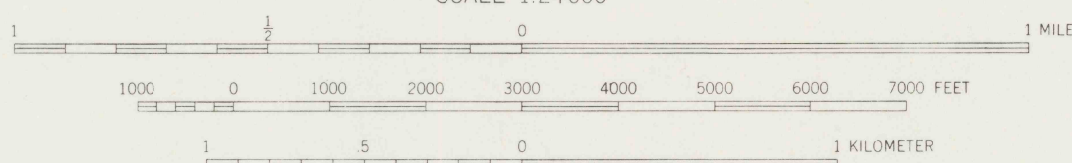
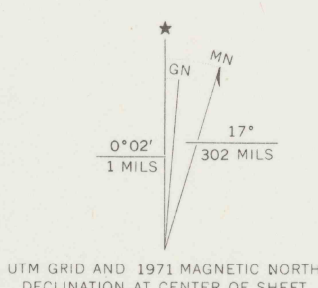
CAMP MEEKER QUADRANGLE  
CALIFORNIA—SONOMA CO.  
7.5 MINUTE SERIES (TOPOGRAPHIC)  
NW 4 SEBASTOPOL 15' QUADRANGLE



Mapped, edited, and published by the Geological Survey

SCALE 1:24,000

Control by USGS and USC&GS  
Topography from aerial photographs by multiplex methods  
Aerial photographs taken 1952. Field check 1954  
Polyconic projection. 1927 North American datum  
10,000-foot grid based on California coordinate system, zone 2  
Dashed land lines indicate approximate locations  
Unchecked elevations are shown in brown  
1000-meter Universal Transverse Mercator grid ticks,  
zone 10, shown in blue  
Revision shown in purple compiled from aerial photographs  
taken 1971. This information not field checked



CONTOUR INTERVAL 40 FEET  
DASHED LINES REPRESENT HALF INTERVAL CONTOURS  
DATUM IS MEAN SEA LEVEL

THIS MAP COMPLIES WITH NATIONAL MAP ACCURACY STANDARDS  
FOR SALE BY U.S. GEOLOGICAL SURVEY, DENVER, COLORADO 80225, OR WASHINGTON, D.C. 20242  
A FOLDER DESCRIBING TOPOGRAPHIC MAPS AND SYMBOLS IS AVAILABLE ON REQUEST

ROAD CLASSIFICATION

Medium-duty ——— Light-duty ———  
Unimproved dirt ———  
State Route ———

CAMP MEEKER, CALIF.  
NW 4 SEBASTOPOL 15' QUADRANGLE  
N 3822.5—W 12252.5/7.5

PHOTOREVISED 1971  
AMS 1480 IV NW SEBASTOPOL 15' QUADRANGLE

DO NOT CIRCULATE

REFERENCE

REF

3700+

Var

U5

7.5

ed. 1971

pp. 1473