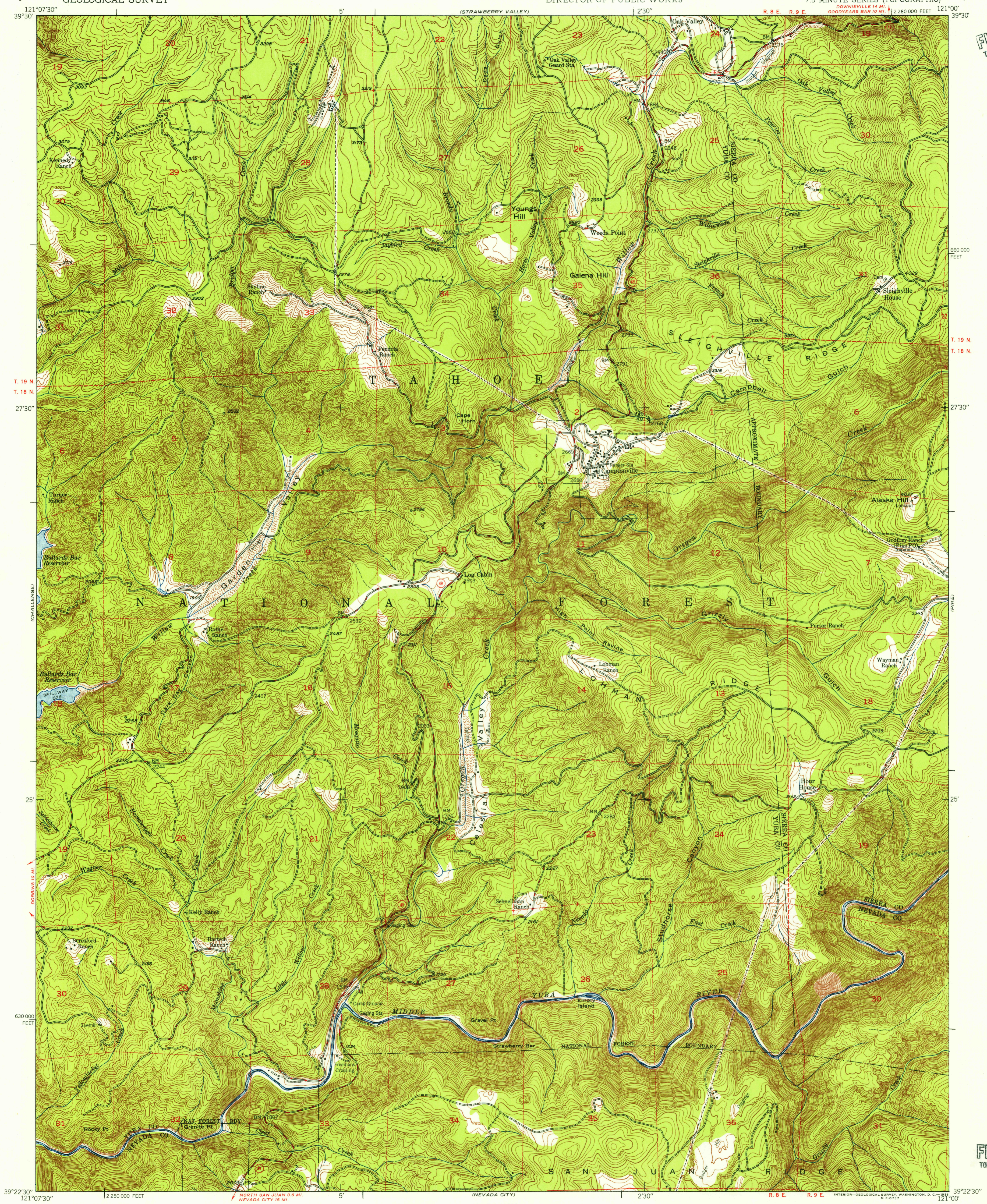


U.S.G.S.
FILE COPY
TOPOGRAPHIC DIVISION

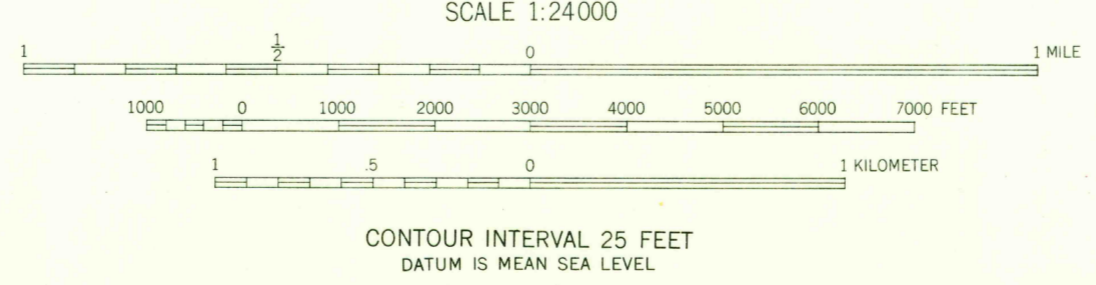
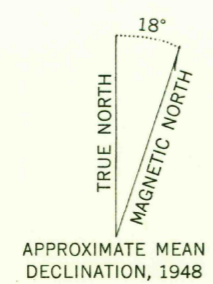


T. 19 N.
T. 18 N.

630 000 FEET

39°22'30" 121°07'30" 2 250 000 FEET (NEVADA CITY) SCALE 1:24 000 1 MILE 1000 0 1000 2000 3000 4000 5000 6000 7000 FEET 1 KILOMETER 0 5 10 15 20 25 30 35 40 45 50 55 60 65 70 75 80 85 90 95 100

Mapped by Fairchild Aerial Surveys, Inc.
Field inspected, edited, and published by the Geological Survey
Control by Fairchild Aerial Surveys, Inc.,
USGS, and USC&GS
Topography from aerial photographs by stereoplanigraph methods
Aerial photographs taken 1946-1947. Field check 1948
Polyconic projection. 1927 North American datum
10,000-foot grid based on California coordinate system,
zone 2
Dashed land lines indicate approximate location
Fairchild triangulation shown by unlabeled located object symbol



ROAD CLASSIFICATION
HARD-SURFACE ALL WEATHER ROADS DRY WEATHER ROADS
Heavy-duty 4 LANE LANE Improved dirt
Medium-duty 4 LANE LANE Unimproved dirt
Loose-surface, graded, or narrow hard-surface
U. S. Route State Route

CAMPTONVILLE, CALIF.
N3922.5-W12100/7.5

FOR SALE BY U. S. GEOLOGICAL SURVEY, FEDERAL CENTER, DENVER, COLORADO OR WASHINGTON 25, D. C.
A FOLDER DESCRIBING TOPOGRAPHIC MAPS AND SYMBOLS IS AVAILABLE ON REQUEST

1948

4820

U.S.G.S.
FILE COPY
TOPOGRAPHIC DIVISION

U.S.G.S.
FILE COPY
TOPOGRAPHIC DIVISION

JAN 20 1956