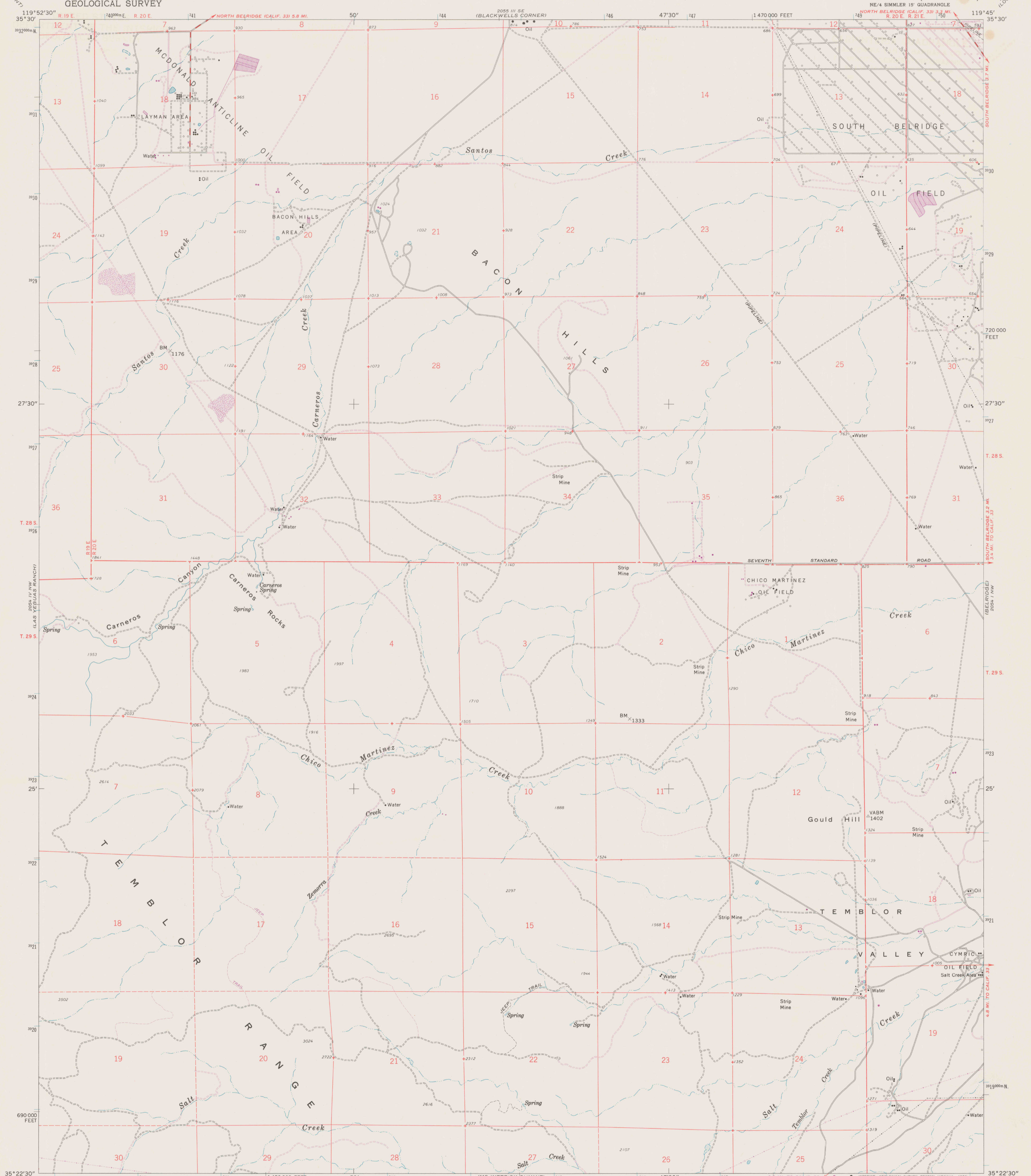
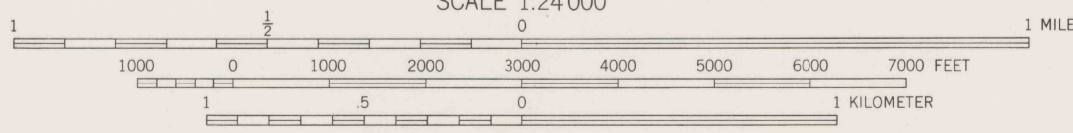
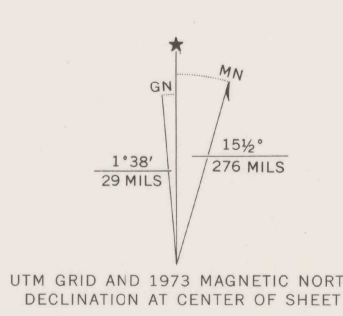


UNITED STATES
DEPARTMENT OF THE INTERIOR
GEOLOGICAL SURVEY

CARNEROS ROCKS QUADRANGLE
CALIFORNIA—KERN CO.
7.5 MINUTE SERIES (TOPOGRAPHIC)



Mapped, edited, and published by the Geological Survey
Control by USGS and USC&GS
Topography from aerial photographs by photogrammetric methods
Aerial photographs taken 1953. Field check 1959
Polyconic projection. 1927 North American datum
10,000-foot grid based on California coordinate system, zone 5
1000-meter Universal Transverse Mercator grid ticks,
zone 11, shown in blue
Dashed land lines indicate approximate locations
Revisions shown in purple compiled from aerial photographs
taken 1973. This information not field checked



CONTOUR INTERVAL 40 FEET
DOTTED LINES REPRESENT 20-FOOT CONTOURS
NATIONAL GEODETIC VERTICAL DATUM OF 1929

THIS MAP COMPLIES WITH NATIONAL MAP ACCURACY STANDARDS
FOR SALE BY U. S. GEOLOGICAL SURVEY, DENVER, COLORADO 80225, OR RESTON, VIRGINIA 22092
A FOLDER DESCRIBING TOPOGRAPHIC MAPS AND SYMBOLS IS AVAILABLE ON REQUEST

RECEIVED
SACRAMENTO
APR 19 1976
MAP INFORMATION
OFFICE



ROAD CLASSIFICATION
Medium-duty ——— Light-duty
Unimproved dirt - - - - -

CARNEROS ROCKS, CALIF.
NE/4 SIMMLER 15' QUADRANGLE
N3522.5—W11945/7.5

1959
PHOTOREVISED 1973
AMS 2054 IV NE—SERIES Y895
DO NOT CIRCULATE

REFERENCE
3700s
Var
U5
ed. 1973
rep. 1976 pp