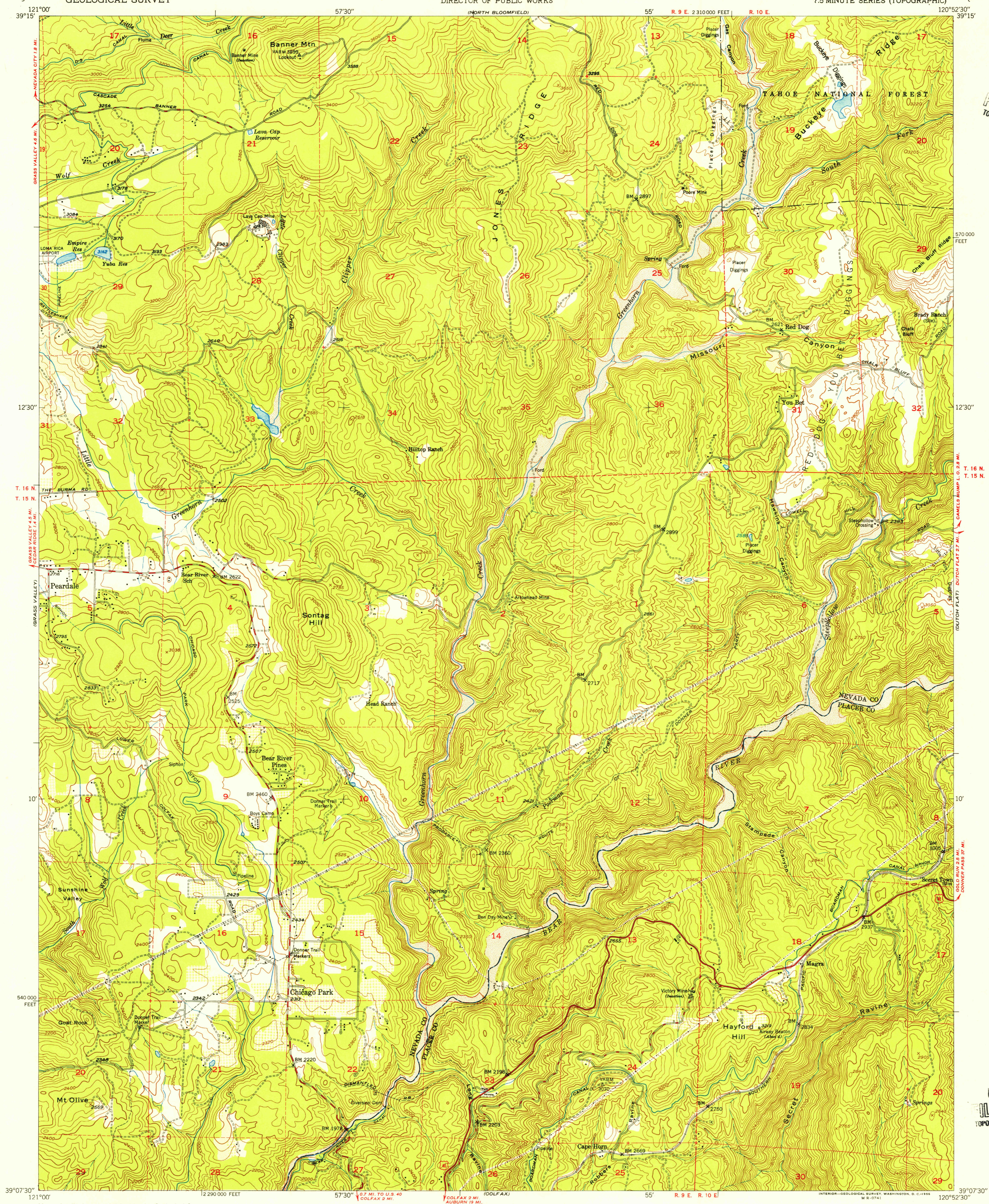
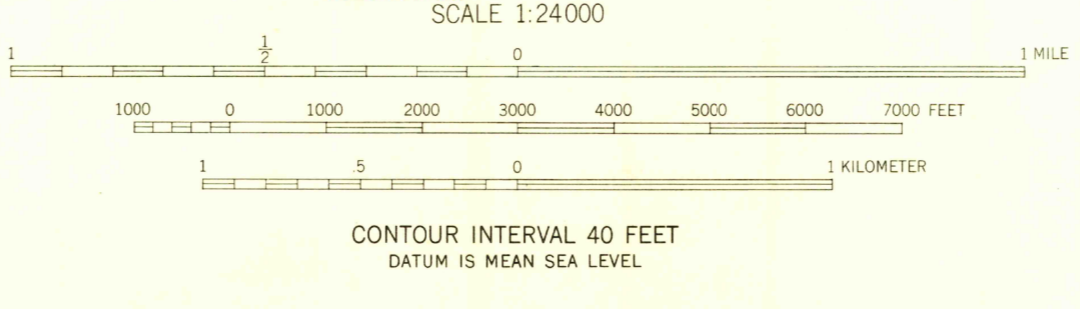
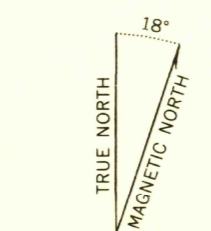


U.S.G.S.
FILE COPY
TOPOGRAPHIC DIVISION

U.S.G.S.
FILE COPY
TOPOGRAPHIC DIVISION



Mapped, edited, and published by the Geological Survey
Control by USGS and USC&GS
Topography from aerial photographs by multiplex methods
Aerial photographs taken 1946. Field check 1949
Polyconic projection. 1927 North American datum
10,000-foot grid based on California coordinate system,
zone 2
Unchecked elevations are shown in brown
Dashed land lines indicate approximate location



USGS
Historical File
Topographic Division

ROAD CLASSIFICATION

HARD-SURFACE ALL WEATHER ROADS	DRY WEATHER ROADS
Heavy-duty <u> </u> 4 LANE LANE	Improved dirt <u> </u>
Medium-duty <u> </u> 4 LANE LANE	Unimproved dirt <u> </u>
Loose-surface, graded, or narrow hard-surface <u> </u>	
U. S. Route <u> </u>	State Route <u> </u>

CHICAGO PARK, CALIF.
N3907.5-W12052.5/7.5