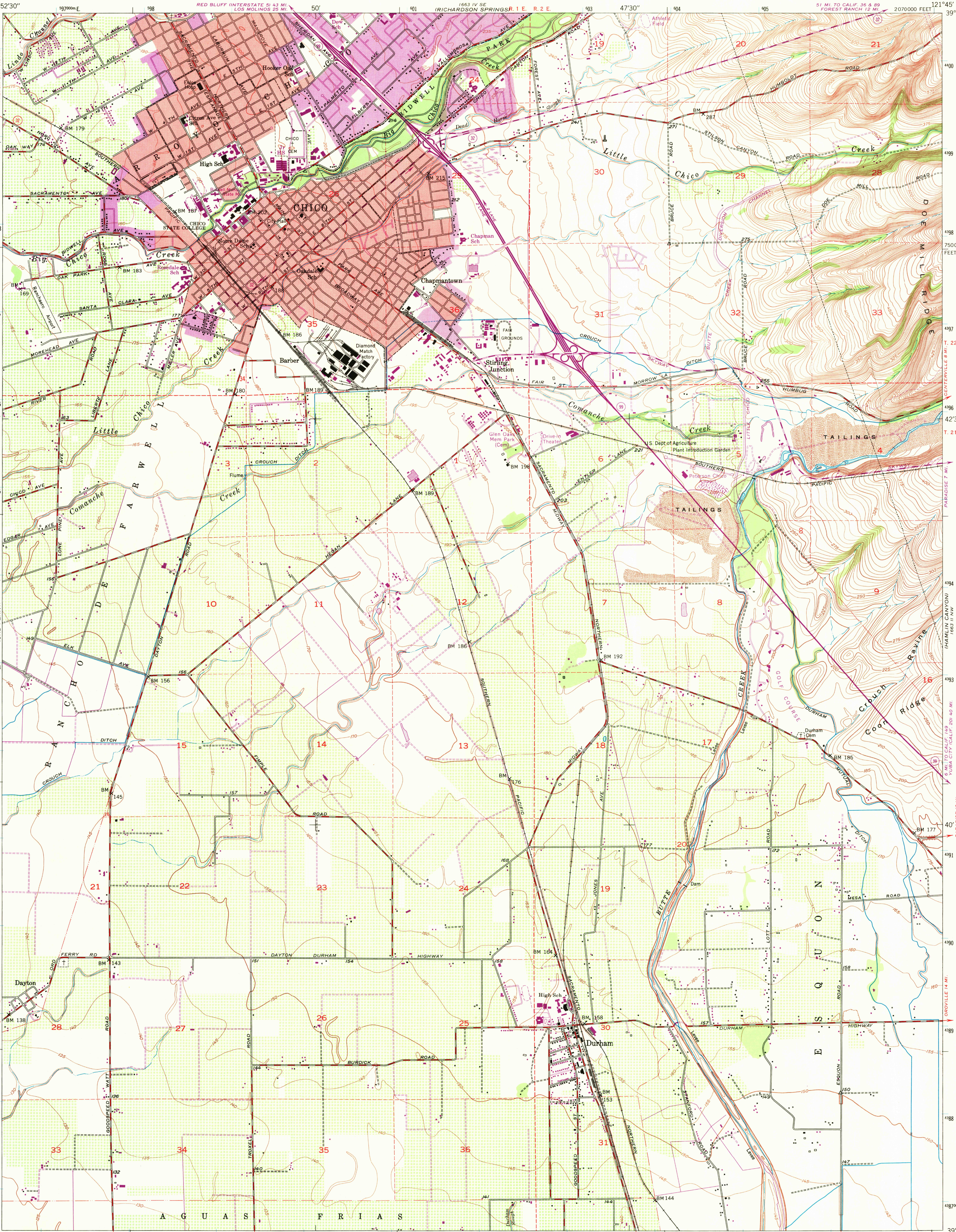


1963 IV SW (WORD)  
1963 III NW (ORD FERRY)  
1963 II NW (ORD FERRY)  
1963 I SW (WORD)  
1963 I SE (WORD)  
1963 II SE (WORD)  
1963 III SE (WORD)  
1963 IV SE (WORD)

UNITED STATES  
DEPARTMENT OF THE INTERIOR  
GEOLOGICAL SURVEY

STATE OF CALIFORNIA  
DEPARTMENT OF WATER RESOURCES

CHICO QUADRANGLE  
CALIFORNIA—BUTTE CO.  
7.5 MINUTE SERIES (TOPOGRAPHIC)  
NE/4 CHICO 15' QUADRANGLE  
51 MI. TO CALIF. 36 & 89  
FOREST RANCH 12 MI.  
2070000 FEET



Mapped, edited, and published by the Geological Survey  
Control by USGS and USC&GS  
Planimetry by photogrammetric methods from aerial photographs taken 1947. Topography by planetable surveys 1948  
Polyconic projection. 1927 North American datum  
10,000-foot grid based on California coordinate system, zone 2  
1000-meter Universal Transverse Mercator grid ticks, zone 10, shown in blue  
Red tint indicates areas in which only landmark buildings are shown  
Revisions shown in purple and recompilation of woodland areas compiled in cooperation with California Department of Water Resources from aerial photographs taken 1969  
This information not field checked

SCALE 1:24,000  
CONTOUR INTERVAL 5 FEET  
DATUM IS MEAN SEA LEVEL

USGS  
Historical File  
Topographic Division

ROAD CLASSIFICATION  
Heavy-duty — Light-duty  
Medium-duty — Unimproved dirt  
State Route

U.S.G.S.  
FILE COPY  
TOPOGRAPHIC DIVISION

CHICO, CALIF.  
NE/4 CHICO 15' QUADRANGLE  
N3937.5—W12145.75  
1948  
PHOTOREVISED 1969  
AMS 1663 III NE—SERIES V895

4610  
JAN 7 1971