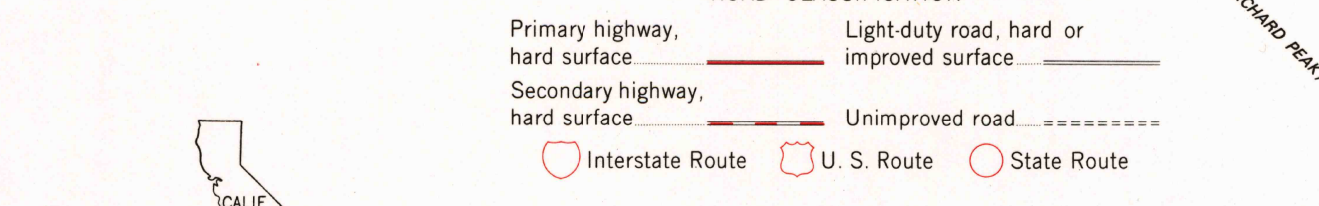
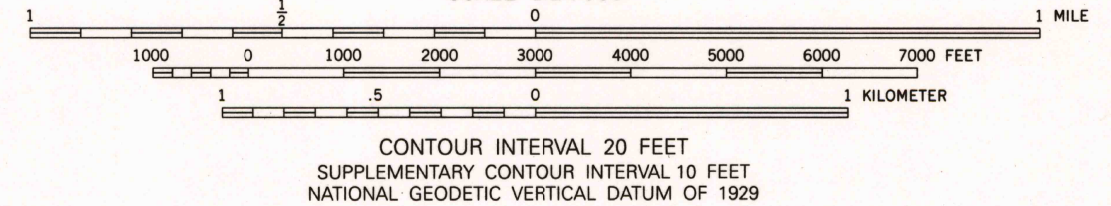
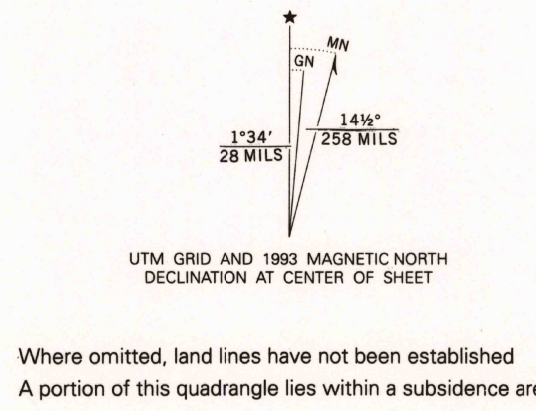
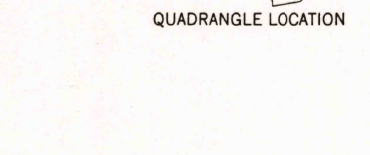


Produced by the United States Geological Survey
Control by USGS and NOS/NOAA
Compiled from aerial photographs taken 1958. Revisions shown in purple and woodblock compiled from aerial photographs taken 1987 and other sources and have been field checked.
Map edited 1993. Conflicts may exist between some updated features and previously mapped contours.
North American Datum of 1927 (NAD 27). Projection: California Coordinate System, zone 4 (Lambert Conformal Conic) 10,000-foot grid ticks; California Coordinate System, zones 4 and 5. Blue 1,000-meter Universal Transverse Mercator grid ticks, zone 10.
North American Datum of 1983 (NAD 83) is shown by dashed corner ticks. The values of the shift between NAD 27 and NAD 83 for 7.5 minute intersections is given in USGS Bulletin 1875.
Fine red dashed lines indicate selected fence lines.



THIS MAP COMPLIES WITH NATIONAL MAP ACCURACY STANDARDS
FOR SALE BY U. S. GEOLOGICAL SURVEY, DENVER, COLORADO 80225, OR RESTON, VIRGINIA 22092
A FOLDER DESCRIBING TOPOGRAPHIC MAPS AND SYMBOLS IS AVAILABLE ON REQUEST



CHOLAME VALLEY, CALIF.
35120-G3-TF-024
1961
REVISED 1993
DMA 1955 IV SE-SERIES V895