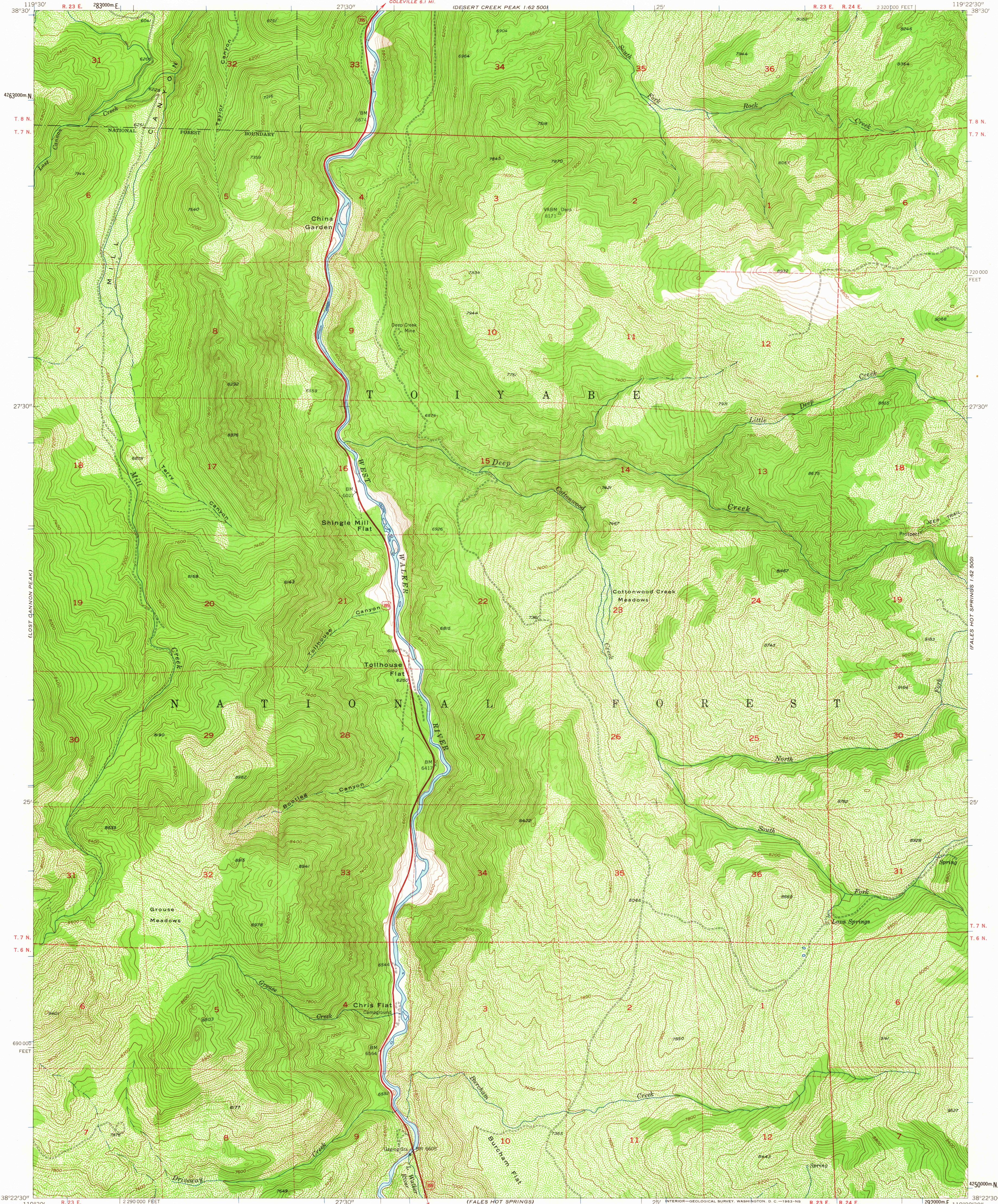
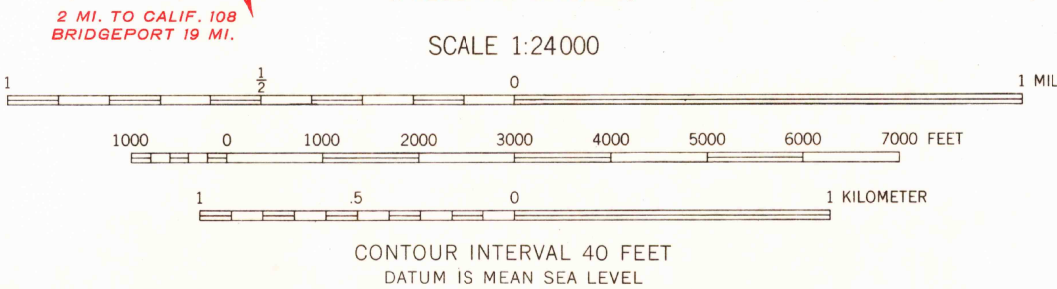
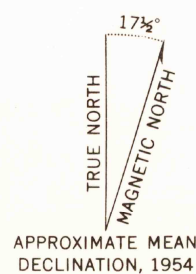


UNITED STATES  
DEPARTMENT OF THE INTERIOR  
GEOLOGICAL SURVEY

CHRIS FLAT QUADRANGLE  
CALIFORNIA—MONO CO.  
7.5 MINUTE SERIES (TOPOGRAPHIC)



Mapped, edited, and published by the Geological Survey  
Control by USGS and USC&GS  
Topography from aerial photographs by multiplex methods  
Aerial photographs taken 1953. Field check 1954  
Polyconic projection. 1927 North American datum  
10,000-foot grid based on California coordinate system, zone 3  
1000-meter Universal Transverse Mercator grid ticks,  
zone 11, shown in blue  
Dashed land lines indicate approximate locations



USGS  
Historical File  
Topographic Division

ROAD CLASSIFICATION  
Heavy-duty ——— Light-duty ———  
Unimproved dirt ———  
U.S. Route



U.S.G.S.  
FILE COPY  
TOPOGRAPHIC DIVISION

CHRIS FLAT, CALIF.  
N 3822.5—W 11922.5/7.5

1954

THIS MAP COMPLIES WITH NATIONAL MAP ACCURACY STANDARDS  
FOR SALE BY U.S. GEOLOGICAL SURVEY, DENVER 25, COLORADO OR WASHINGTON 25, D. C.  
A FOLDER DESCRIBING TOPOGRAPHIC MAPS AND SYMBOLS IS AVAILABLE ON REQUEST

2710