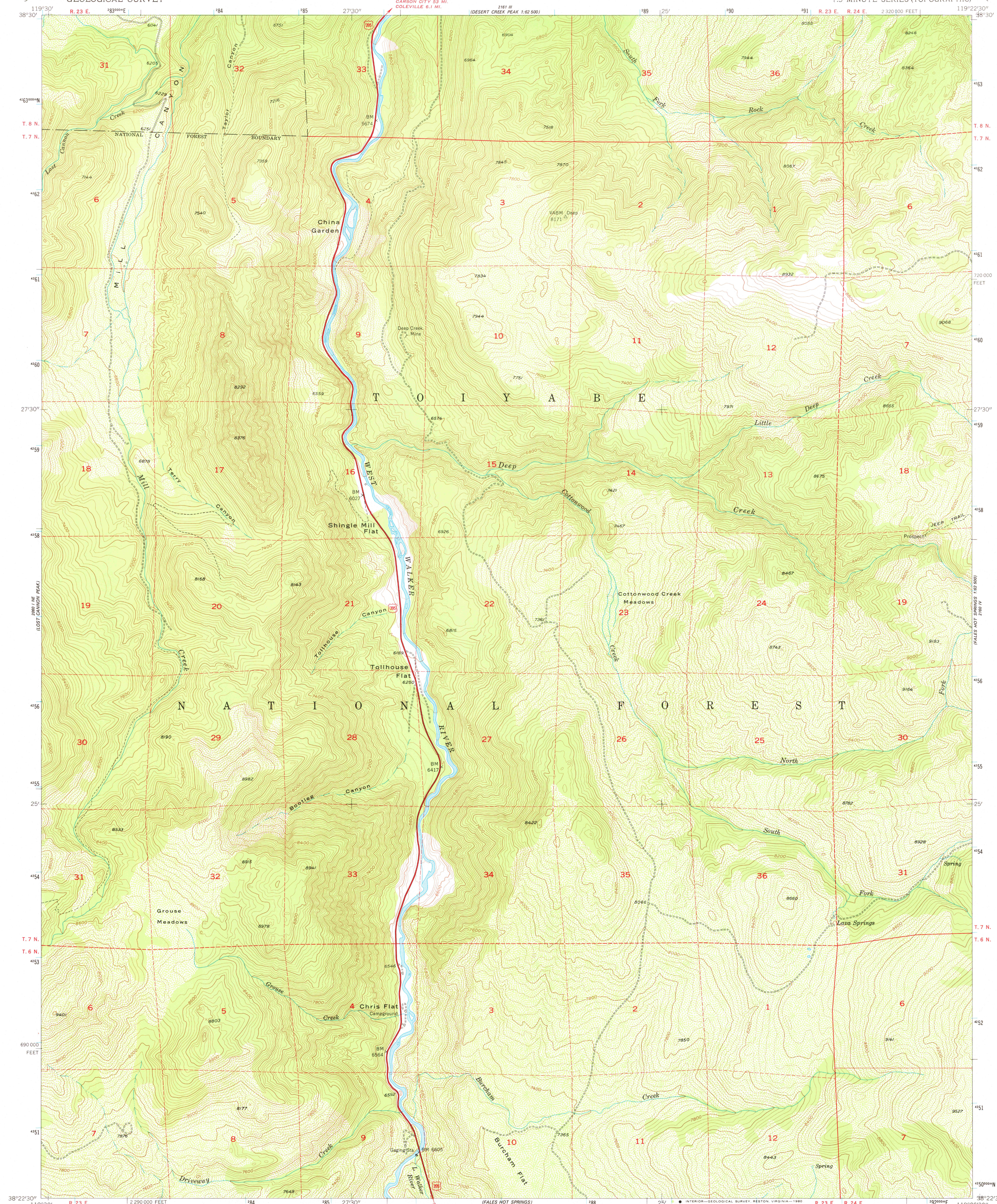


UNITED STATES  
DEPARTMENT OF THE INTERIOR  
GEOLOGICAL SURVEY

CHRIS FLAT QUADRANGLE  
CALIFORNIA—MONO CO.  
7.5 MINUTE SERIES (TOPOGRAPHIC)



Mapped, edited, and published by the Geological Survey

Control by USGS and USC&GS

Topography from aerial photographs by multiplex methods

Aerial photographs taken 1953. Field check 1954

Polyconic projection. 1927 North American datum

10,000-foot grid based on California coordinate system, zone 3

1000-meter Universal Transverse Mercator grid ticks,

zone 11, shown in blue

To place on the predicted North American Datum 1983,

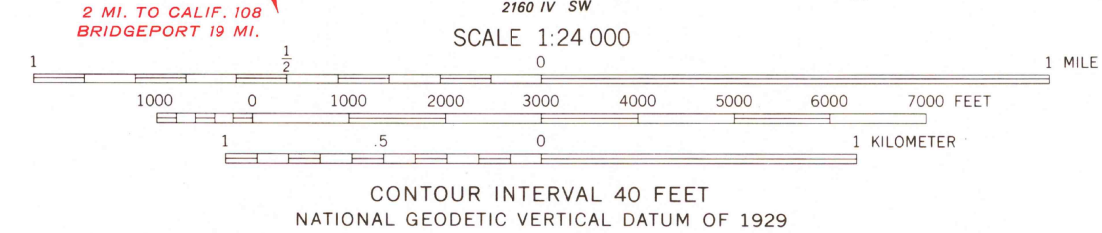
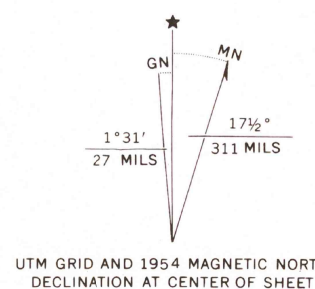
move the projection lines 12 meters north and

86 meters east as shown by dashed corner ticks

Dashed land lines indicate approximate locations

There may be private inholdings within the boundaries of

the National or State reservations shown on this map



ROAD CLASSIFICATION  
Heavy-duty ——— Light-duty ———  
Unimproved dirt ———  
U.S. Route

USGS  
Historical File  
Topographic Division

CHRIS FLAT, CALIF.  
N3822.5-W11922.5/7.5  
1954

DMA 2160 IV NW—SERIES V895

THIS MAP COMPLIES WITH NATIONAL MAP ACCURACY STANDARDS  
FOR SALE BY U. S. GEOLOGICAL SURVEY, DENVER, COLORADO 80225, OR RESTON, VIRGINIA 22092  
A FOLDER DESCRIBING TOPOGRAPHIC MAPS AND SYMBOLS IS AVAILABLE ON REQUEST

JUN - 5 1980