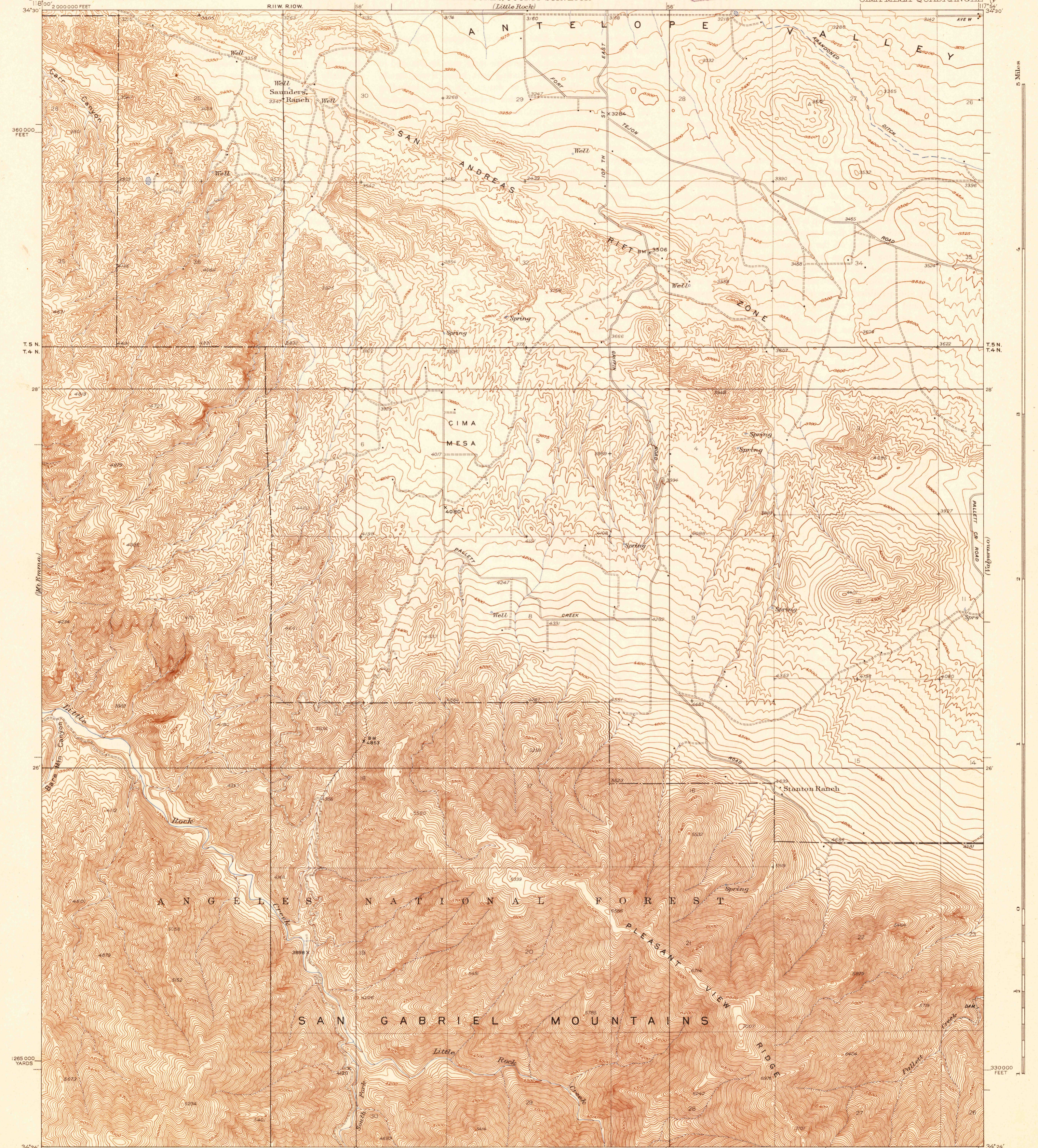
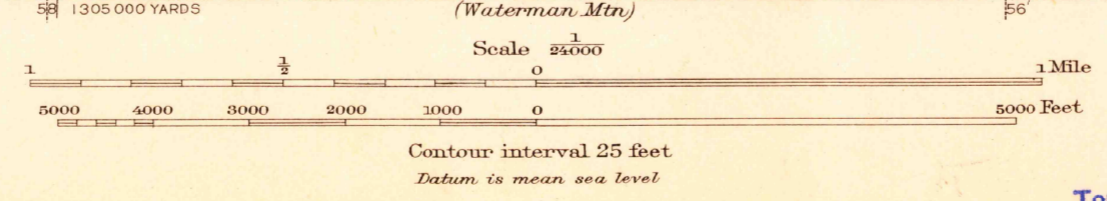
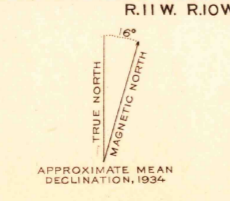


U.S.G.S.
FILE COPY
Inspection and Editing.



Topography by C.A. Ecklund,
C.P. McKinley, and W.R. Chenoweth
Surveyed in 1934



USGS
Historical File
Topographic Division
Inspection and Editing.

Polyconic projection, North American datum
5000 yard grid based on U.S. zone system, G
10000 foot grid based on California(S)
rectangular coordinate system

CIMA MESA, CALIF.
Edition of 1939

JUN 19 1945

2110