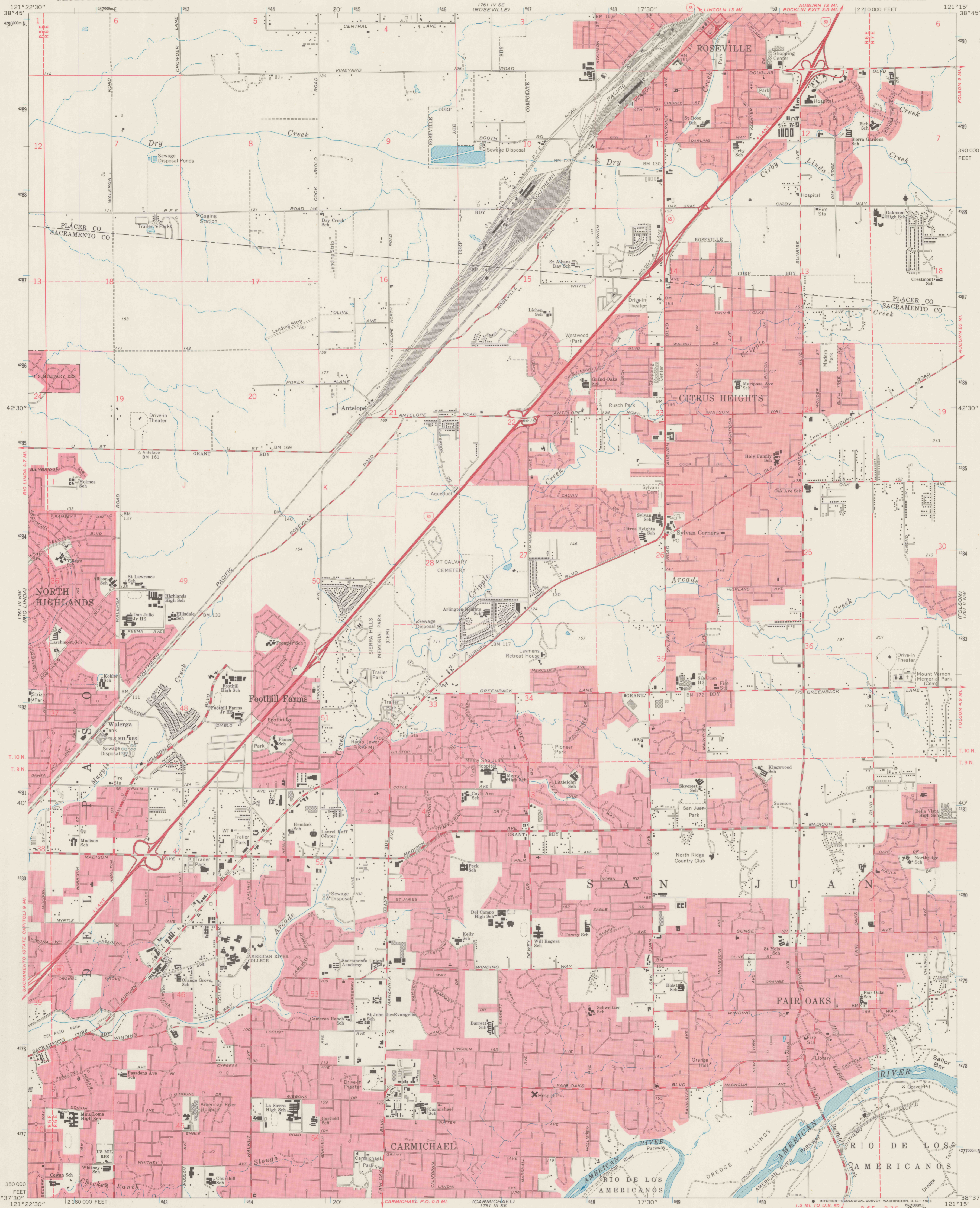
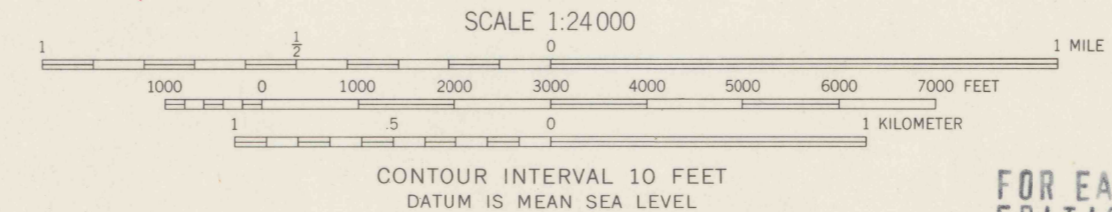
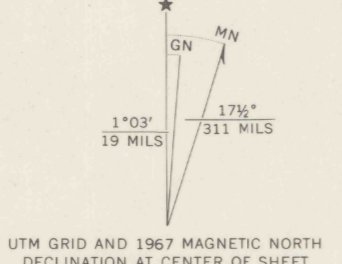


UNITED STATES  
DEPARTMENT OF THE INTERIOR  
GEOLOGICAL SURVEY

CITRUS HEIGHTS QUADRANGLE  
CALIFORNIA  
7.5 MINUTE SERIES (TOPOGRAPHIC)  
NE/4 FAIR OAKS 15' QUADRANGLE



Mapped, edited, and published by the Geological Survey in cooperation with California Department of Water Resources Control by USGS and USC&GS  
Planimetry by photogrammetric methods from aerial photographs taken 1947. Topography by planimetric surveys 1951. Revised from aerial photographs taken 1956. Field checked 1967  
Polyconic projection. 1927 North American datum 10,000-foot grid based on California coordinate system, zone 2 1000-meter Universal Transverse Mercator grid ticks, zone 10, shown in blue  
Red tint indicates areas in which only landmark buildings are shown  
Fine red dashed lines indicate selected fence lines  
Land grant boundaries which follow the banks of the American River are not shown  
Dotted land lines established by private survey



FOR EARLIEST EDITION OF THIS MAP SEE 3852.C48 31.U5: Antelope



THIS MAP COMPLIES WITH NATIONAL MAP ACCURACY STANDARDS FOR SALE BY U.S. GEOLOGICAL SURVEY, DENVER, COLORADO 80225, OR WASHINGTON, D.C. 20242 A FOLDER DESCRIBING TOPOGRAPHIC MAPS AND SYMBOLS IS AVAILABLE ON REQUEST

ROAD CLASSIFICATION

Heavy-duty	Light-duty
Medium-duty	Unimproved dirt
Interstate Route	State Route

CITRUS HEIGHTS, CALIF.  
NE/4 FAIR OAKS 15' QUADRANGLE  
N3837.5—W12115/7.5  
1967  
AMS 1761 III NE—SERIES V895  
**DO NOT CIRCULATE**  
REF 3700 Var U5 7.5 ed. 1967 rep. 1969 pp

SPECIAL PRINTING  
Contours and wetland symbols omitted

REFERENCE

BUFFALO CREEK