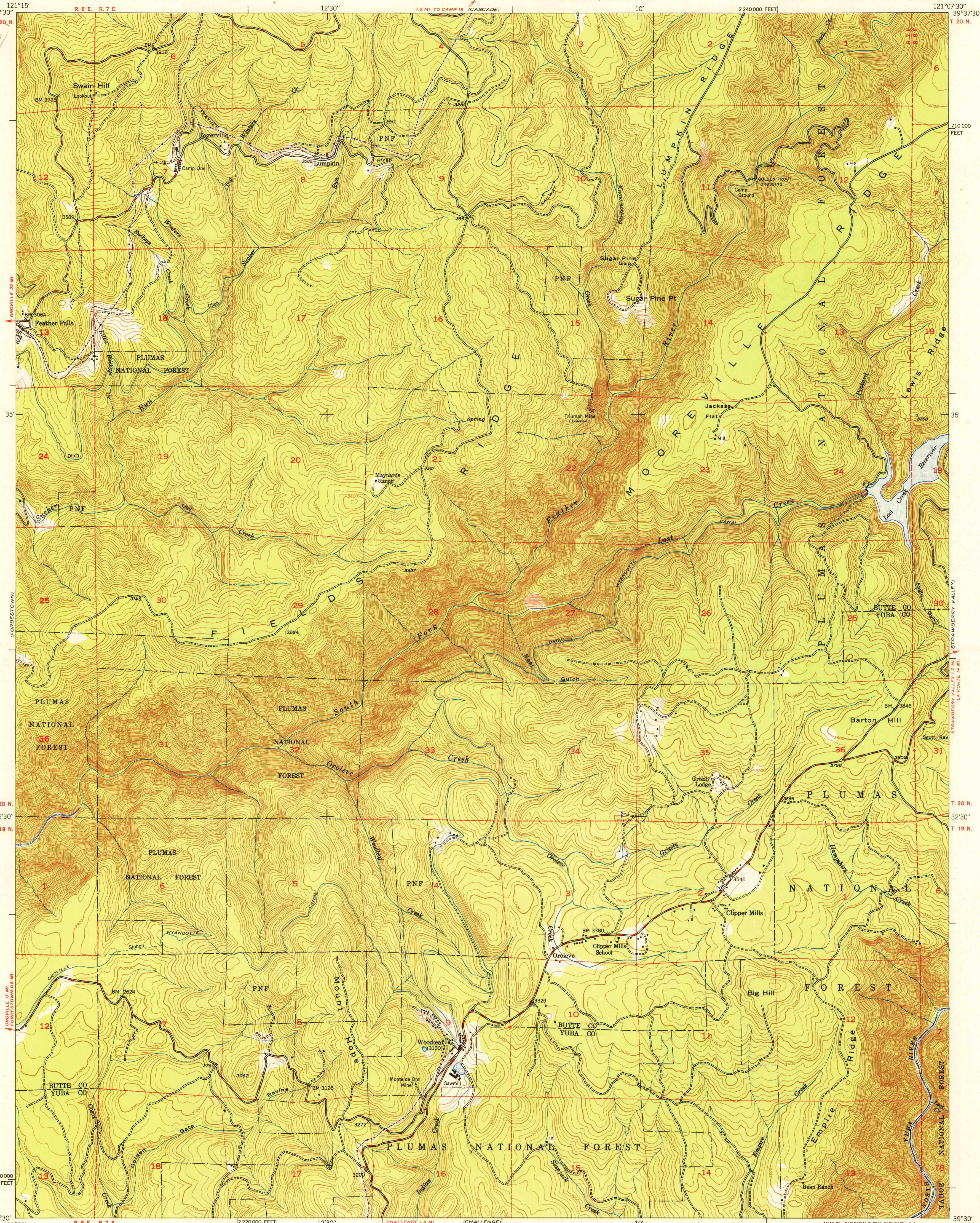
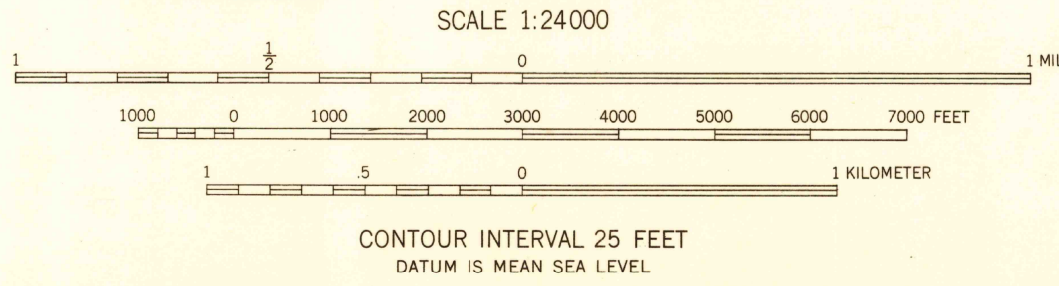
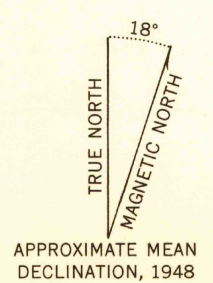


U.S. G.S.
FILE COPY
Inspection and mailing



Mapped by Fairchild Aerial Surveys, Inc.
Field inspected, edited, and published by the Geological Survey
Control by Fairchild Aerial Surveys, Inc.,
USGS, and USC&GS
Topography from aerial photographs by stereoplanigraph methods
Aerial photographs taken 1946-1947. Field check 1948
Polyconic projection. 1927 North American datum
10,000-foot grid based on California coordinate system,
zone 2
Dashed land lines indicate approximate location
Fairchild triangulation shown by unlabeled located object symbol



ROAD CLASSIFICATION

HARD-SURFACE ALL WEATHER ROADS	DRY WEATHER ROADS
Heavy-duty — LANE IS LANE	Improved dirt - - - - -
Medium-duty - - - - - LANE IS LANE	Unimproved dirt
Loose-surface, graded, or narrow hard-surface - - - - -	
U. S. Route ⊠	State Route ○

CLIPPER MILLS, CALIF.
N 3930—W 12107.5/7.5
EDITION OF 1950

FOR SALE BY U. S. GEOLOGICAL SURVEY, FEDERAL CENTER, DENVER, COLORADO OR WASHINGTON 25, D. C.
A FOLDER DESCRIBING TOPOGRAPHIC MAPS AND SYMBOLS IS AVAILABLE ON REQUEST