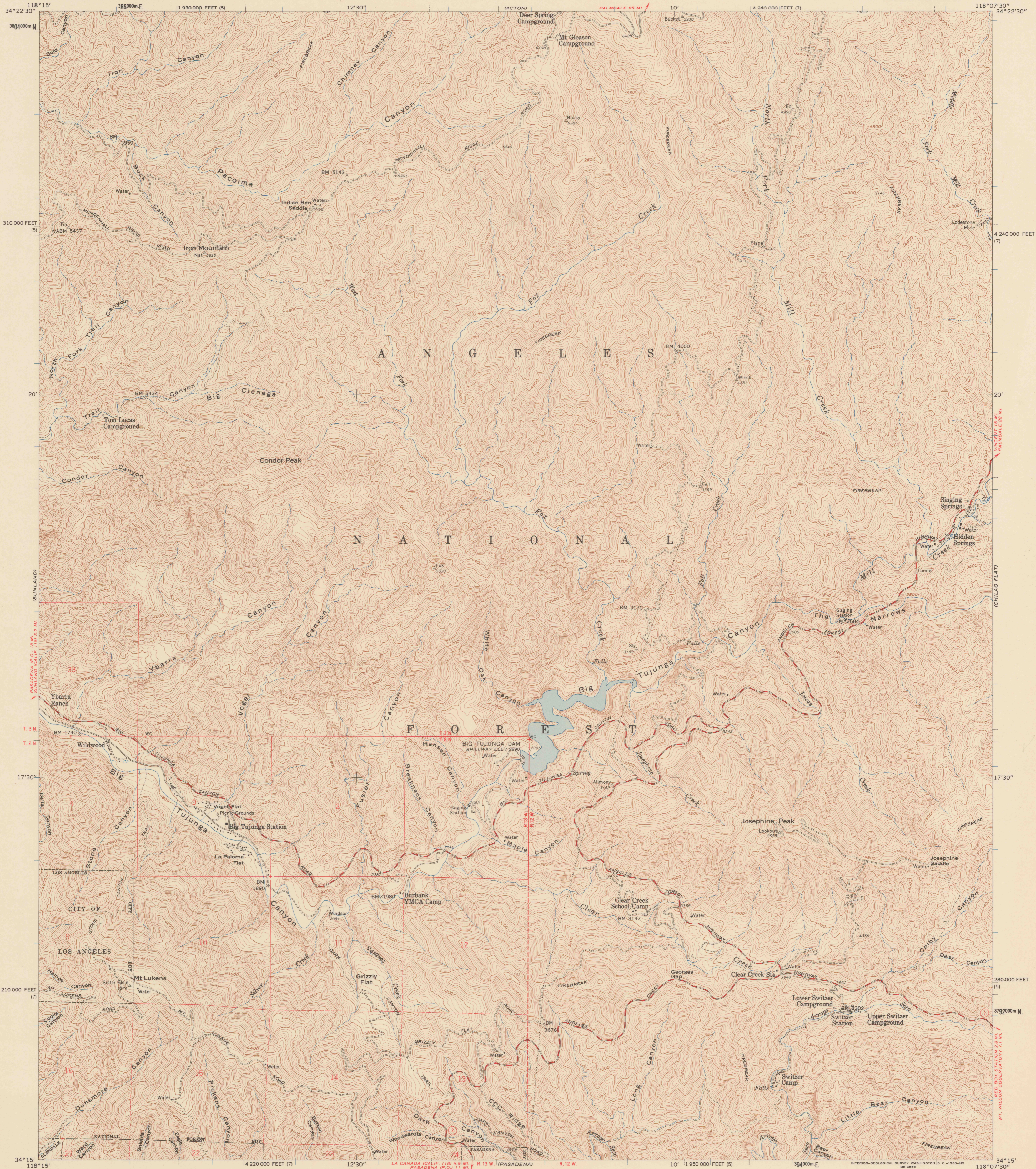


UNITED STATES  
DEPARTMENT OF THE INTERIOR  
GEOLOGICAL SURVEY

CONDOR PEAK QUADRANGLE  
CALIFORNIA-LOS ANGELES CO.  
7.5 MINUTE SERIES (TOPOGRAPHIC)  
SW/4 ACTON 15' QUADRANGLE



Mapped, edited, and published by the Geological Survey  
Control by USGS, USC&GS, and U. S. Forest Service  
Topography from aerial photographs by photogrammetric methods  
Aerial photographs taken 1957. Field check 1959  
Polyconic projection. 1927 North American datum  
10,000-foot grids based on California coordinate system, zones 7 and 5  
1000-meter Universal Transverse Mercator grid ticks,  
zone 11, shown in blue  
Dashed land lines indicate approximate locations  
Land lines unsurveyed in T. 2 and 3 N.-R. 12 W.  
and part of T. 3 N.-R. 13 W.

TRUE NORTH  
MAGNETIC NORTH  
APPROXIMATE MEAN  
DECLINATION, 1959

SCALE 1:24,000  
1 0 1000 2000 3000 4000 5000 6000 7000 FEET  
1 0 5 10 KILOMETER  
CONTOUR INTERVAL 40 FEET  
DATUM IS MEAN SEA LEVEL

THIS MAP COMPLIES WITH NATIONAL MAP ACCURACY STANDARDS  
FOR SALE BY U. S. GEOLOGICAL SURVEY, DENVER 25, COLORADO OR WASHINGTON 25, D. C.  
A FOLDER DESCRIBING TOPOGRAPHIC MAPS AND SYMBOLS IS AVAILABLE ON REQUEST



ROAD CLASSIFICATION  
Medium-duty ——— Light-duty ———  
Unimproved dirt ———  
State Route

CONDOR PEAK, CALIF.  
SW/4 ACTON 15' QUADRANGLE  
N3415-W11807.5/7.5

1959

REFERENCE