

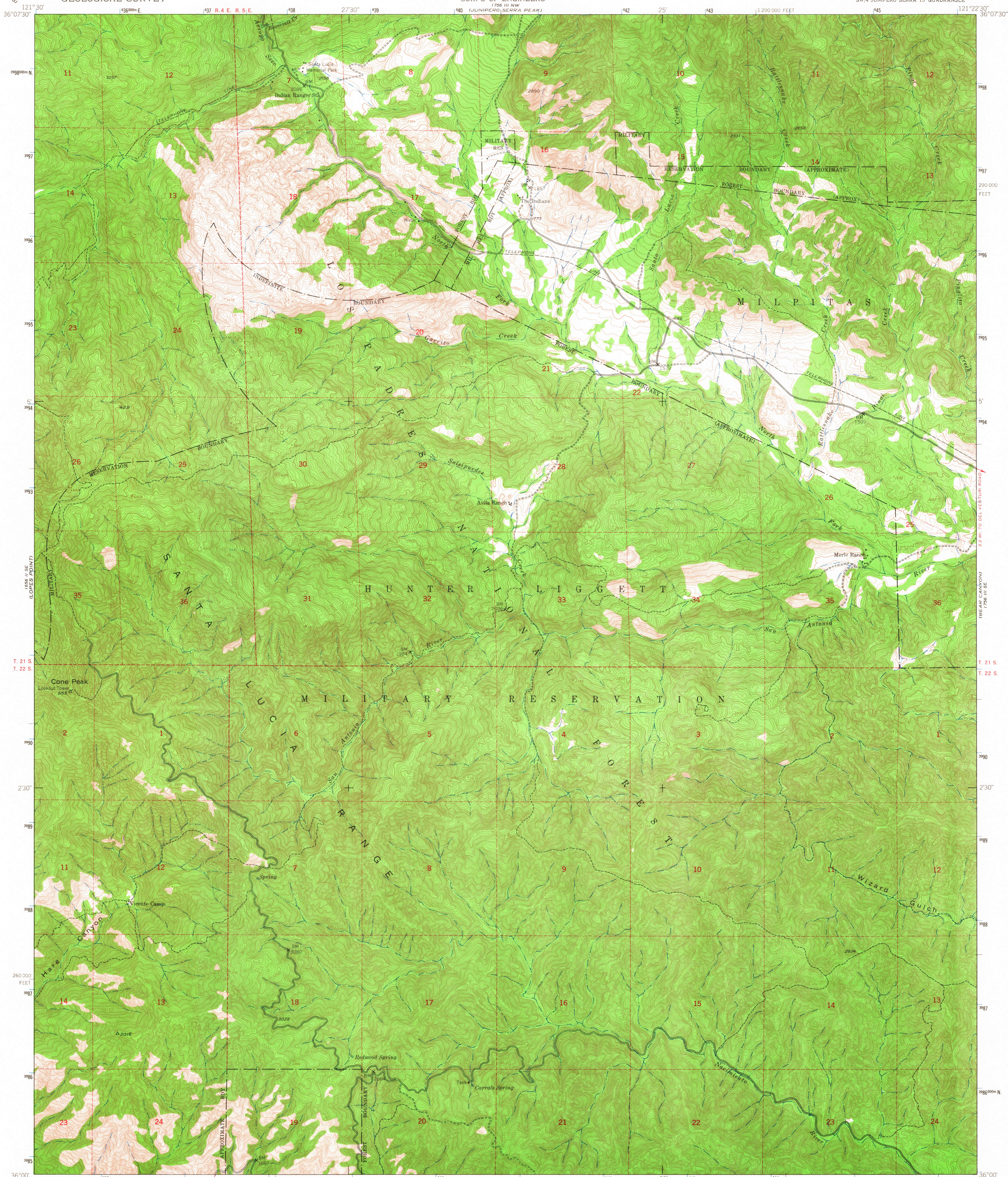
1756 III SW  
HO-1 SPRINGS

UNITED STATES  
DEPARTMENT OF THE INTERIOR  
GEOLOGICAL SURVEY

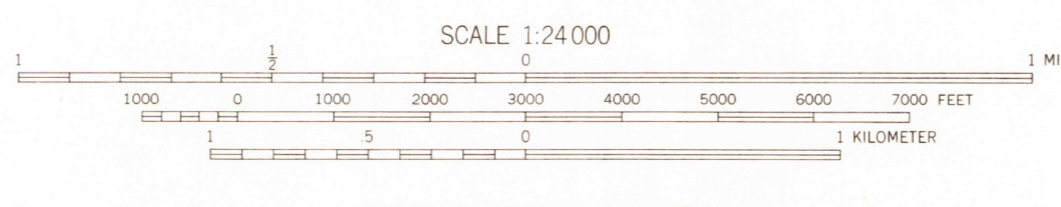
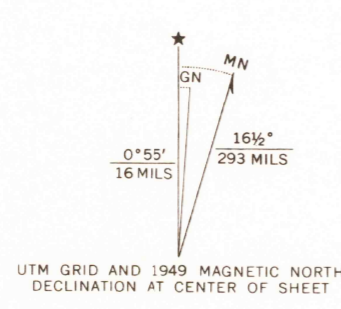
UNITED STATES  
DEPARTMENT OF THE ARMY  
CORPS OF ENGINEERS

CONE PEAK QUADRANGLE  
CALIFORNIA-MONTEREY CO.  
7.5 MINUTE SERIES (TOPOGRAPHIC)  
SW/4 JUNIPERO SERRA 15' QUADRANGLE

1756 III SW  
PELIZ CANYON



Mapped by the Army Map Service  
Published for civil use by the Geological Survey  
Control by USGS, USC&GS, and USCE  
Topography from aerial photographs by multiplex methods  
Aerial photographs taken 1947. Field check 1949  
Polyconic projection. 1927 North American datum  
10,000-foot grid based on California coordinate system,  
zone 4  
Unchecked elevations are shown in brown  
Dashed land lines indicate approximate locations  
1000-meter Universal Transverse Mercator grid ticks,  
zone 10, shown in blue



CONTOUR INTERVAL 20 FEET  
DATUM IS MEAN SEA LEVEL

USCS  
Historical File  
Topographic Division

ROAD CLASSIFICATION	
Heavy-duty	4 LANE 6 LANE Light-duty
Medium-duty	4 LANE 6 LANE Unimproved dirt
U. S. Route	State Route



U.S.G.S.  
TOPOGRAPHIC DIVISION

CONE PEAK, CALIF.  
SW/4 JUNIPERO SERRA 15' QUADRANGLE  
N3600-W12122.5/7.5

1949  
AMS 1756 III SW-SERIES V895

THIS MAP COMPLIES WITH NATIONAL MAP ACCURACY STANDARDS  
FOR SALE BY U. S. GEOLOGICAL SURVEY, DENVER, COLORADO 80225, OR WASHINGTON, D. C. 20242  
A FOLDER DESCRIBING TOPOGRAPHIC MAPS AND SYMBOLS IS AVAILABLE ON REQUEST

2260