

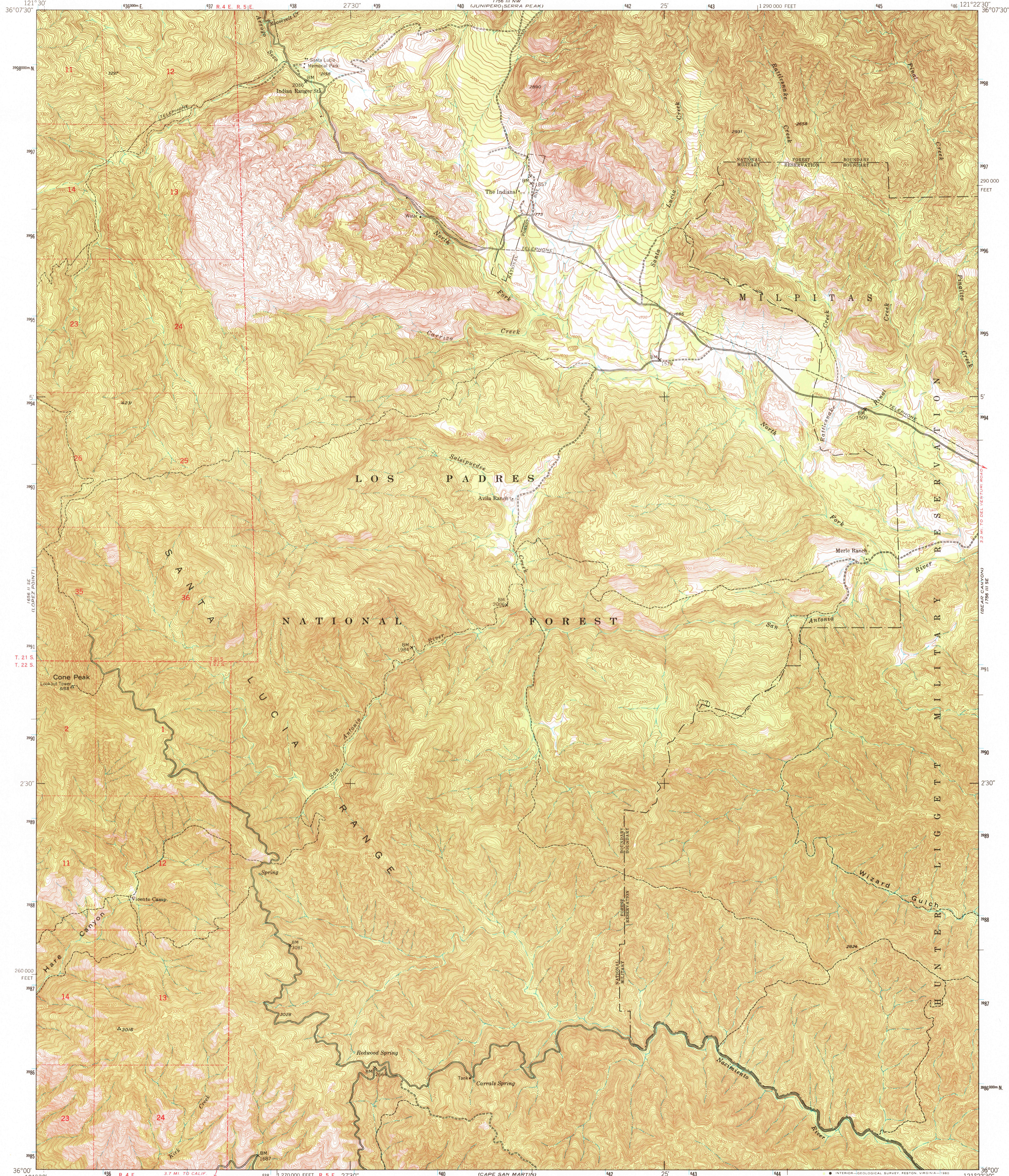
Use of this map is prohibited in the State of California

UNITED STATES DEPARTMENT OF THE INTERIOR GEOLOGICAL SURVEY

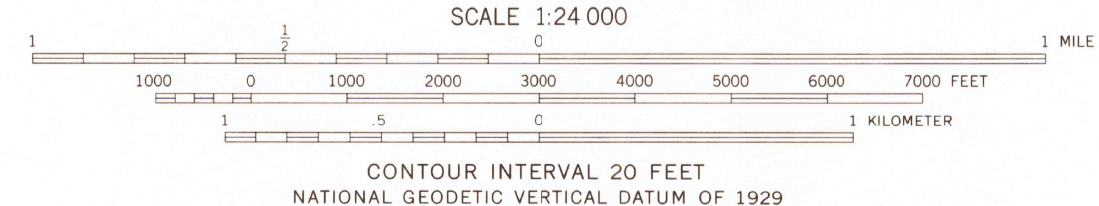
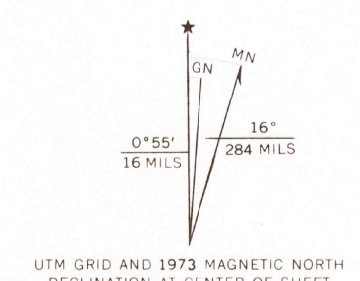
UNITED STATES DEPARTMENT OF THE ARMY CORPS OF ENGINEERS

CONE PEAK QUADRANGLE CALIFORNIA-MONTEREY CO. 7.5 MINUTE SERIES (TOPOGRAPHIC) SW/4 JUNIPERO SERRA 15' QUADRANGLE

Use of this map is prohibited in the State of California



Mapped by the Army Map Service. Published for civil use by the Geological Survey. Control by USGS, USC&GS, and USCE. Topography from aerial photographs by multiplex methods. Aerial photographs taken 1947. Field check 1949. Polyconic projection. 1927 North American datum. 10,000-foot grid based on California coordinate system, zone 4. 1000-meter Universal Transverse Mercator grid ticks, zone 10, shown in blue. To place on the predicted North American Datum 1983 move the projection lines 9 meters north and 92 meters east as shown by dashed corner ticks. Certain land lines are omitted because of insufficient data. There may be private inholdings within the boundaries of the National or State reservations shown on this map.



THIS MAP COMPLIES WITH NATIONAL MAP ACCURACY STANDARDS FOR SALE BY U. S. GEOLOGICAL SURVEY, DENVER, COLORADO 80225, OR RESTON, VIRGINIA 22092. A FOLDER DESCRIBING TOPOGRAPHIC MAPS AND SYMBOLS IS AVAILABLE ON REQUEST.



ROAD CLASSIFICATION table with symbols for heavy-duty, medium-duty, light-duty, and unimproved dirt roads, as well as U.S. and State routes.

USGS Historical File Topographic Division

CONE PEAK, CALIF. SW/4 JUNIPERO SERRA 15' QUADRANGLE N3600-W12122.5/7.5

1949. MINOR CORRECTIONS MADE 1972. DMA 1726 III SW - SERIES 9825. PHOTOINSPECTED 1972.

JUN - 6 1980

1900

RETURN TO: USGS AND HISTORICAL MAP ARCHIVES