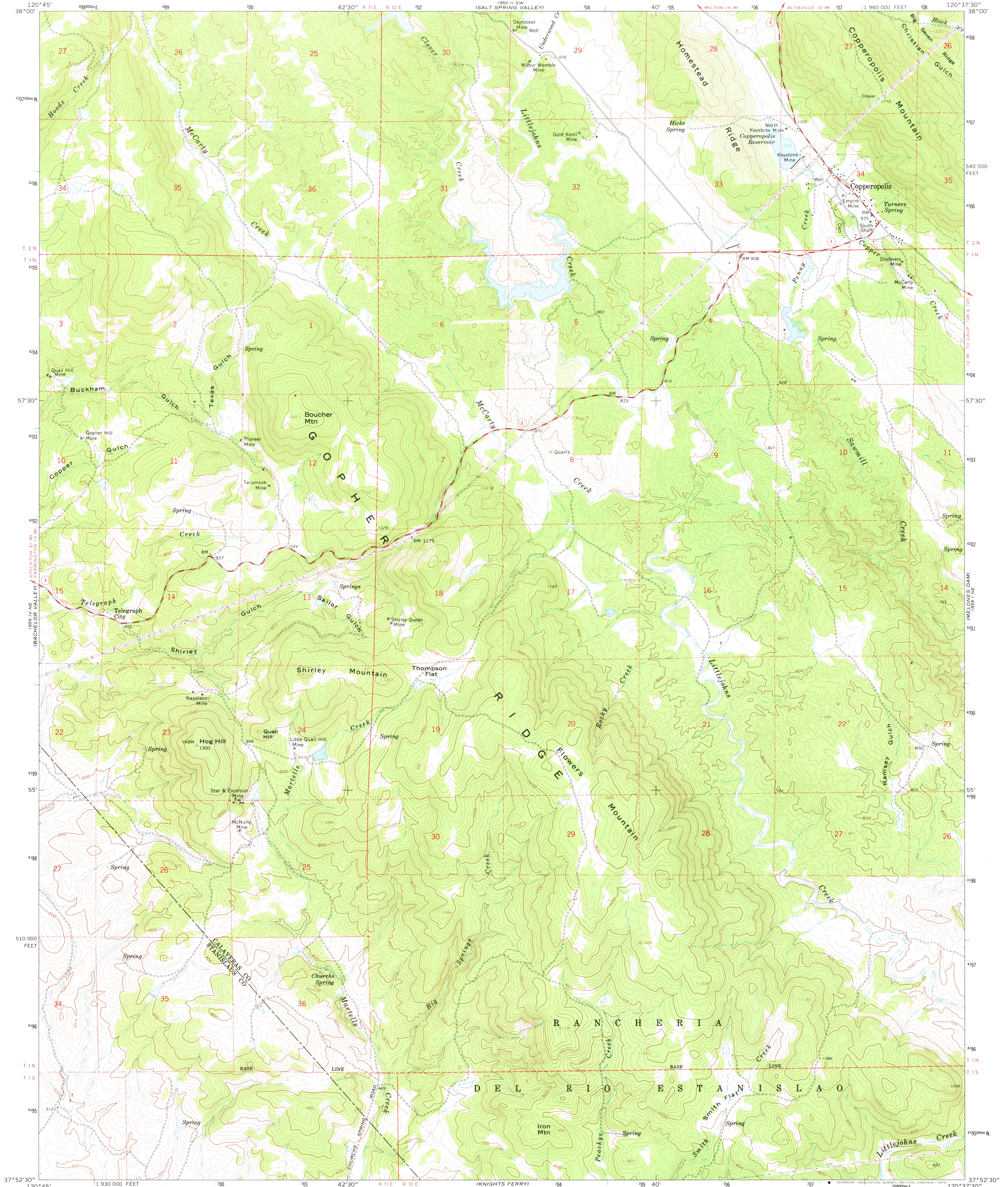
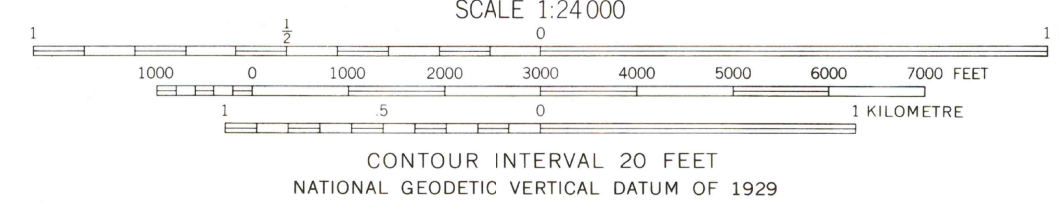
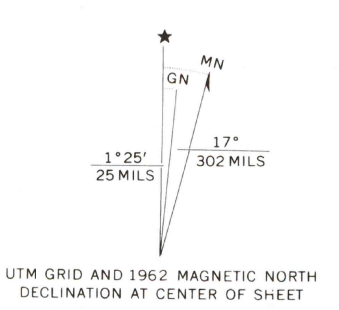


1899 U.S. GEOLOGICAL SURVEY
ANGELS CAMP



Mapped, edited, and published by the Geological Survey in cooperation with California Department of Water Resources Control by USGS and USC&GS
Topography by photogrammetric methods from aerial photographs taken 1959. Field checked 1962
Polyconic projection. 1927 North American datum 10,000-foot grid based on California coordinate system, zone 3 1000-metre Universal Transverse Mercator grid ticks, zone 10, shown in blue
Fine red dashed lines indicate selected fence lines



CONTOUR INTERVAL 20 FEET
NATIONAL GEODETIC VERTICAL DATUM OF 1929

ROAD CLASSIFICATION
Medium-duty ——— Light-duty ———
Unimproved dirt - - - - -
State Route ○



USGS
HISTORICAL FILE
TOPOGRAPHIC DIVISION

COPPERPOLIS, CALIF.
NW/4 COPPERPOLIS 15' QUADRANGLE
N3752.5—W12037.5/7.5
1962
AMS 1859 I NW—SERIES V895

JUN 20 1962

4920

THIS MAP COMPLIES WITH NATIONAL MAP ACCURACY STANDARDS
FOR SALE BY U. S. GEOLOGICAL SURVEY, DENVER, COLORADO 80225, OR RESTON, VIRGINIA 22092
A FOLDER DESCRIBING TOPOGRAPHIC MAPS AND SYMBOLS IS AVAILABLE ON REQUEST