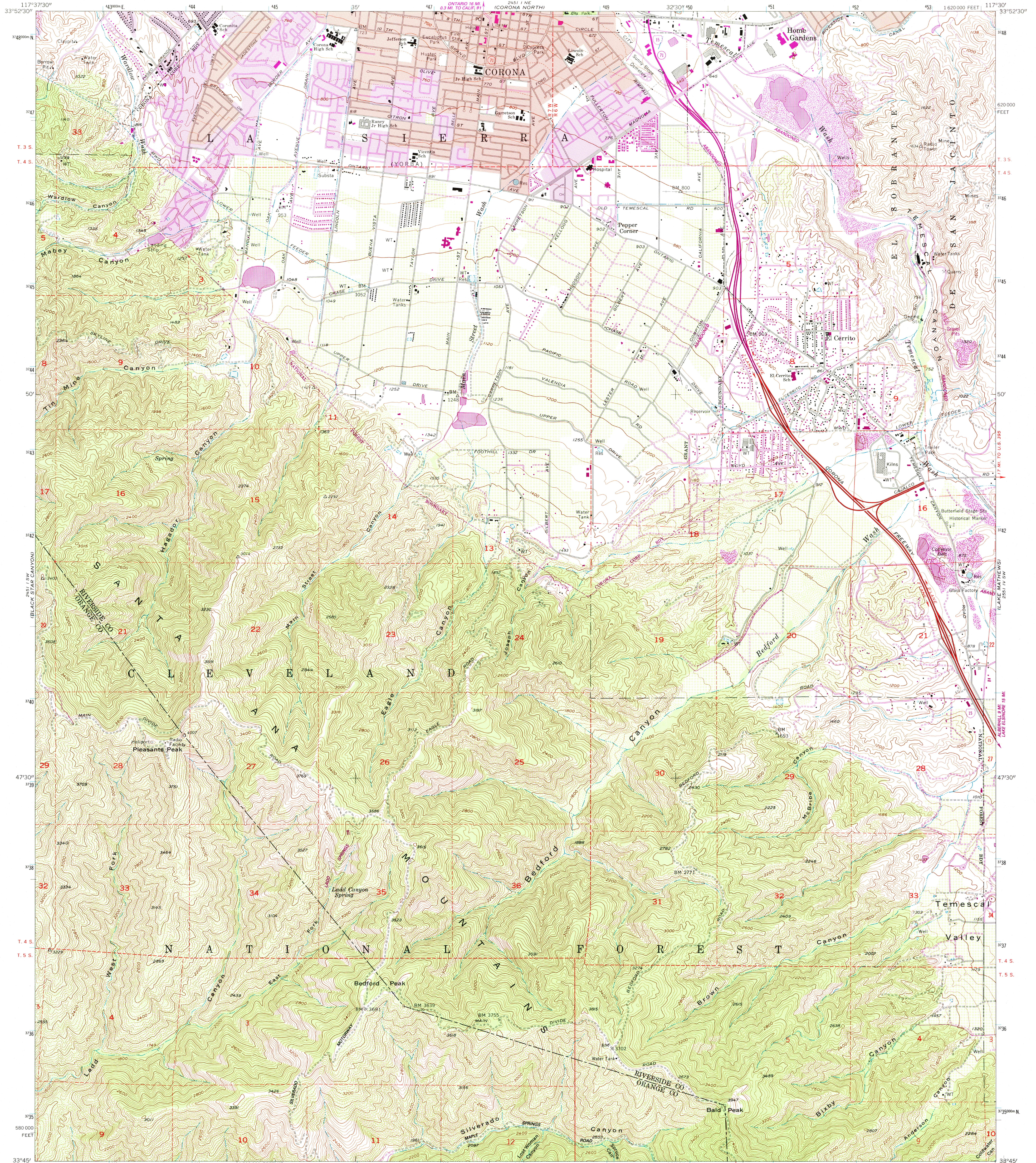


UNITED STATES  
DEPARTMENT OF THE INTERIOR  
GEOLOGICAL SURVEY

CORONA SOUTH QUADRANGLE  
CALIFORNIA  
7.5 MINUTE SERIES (TOPOGRAPHIC)



Mapped, edited, and published by the Geological Survey  
Control by USGS, NOS/NOAA, and USCE  
Topography by photogrammetric methods from aerial photographs  
taken 1952 and planimetric surveys 1933. Field checked 1954  
Revised from aerial photographs taken 1966. Field checked 1967  
Polyconic projection, 1927 North American Datum  
10,000-foot grid based on California coordinate system, zone 6  
1000-meter Universal Transverse Mercator grid ticks,  
zone 11, shown in blue  
Red tint indicates areas in which only landmark buildings are shown  
There may be private inholdings within the boundaries  
of the National or State reservations shown on this map  
Purple tint indicates areas of urban extensions

UTM GRID and 1983 MAGNETIC NORTH  
DECLINATION AT CENTER OF SHEET  
To place on the predicted North American Datum 1983  
move the projection lines 1 meter north and  
83 meters east as shown by dashed corner ticks

SCALE 1:24,000  
CONTOUR INTERVAL 40 FEET  
DOTTED LINES REPRESENT 20-FOOT CONTOURS  
NATIONAL GEODETIC VERTICAL DATUM OF 1929

ROAD CLASSIFICATION  
Primary highway, hard surface  
Secondary highway, hard surface  
Unimproved road  
Interstate Route  
State Route  
CORONA SOUTH, CALIF.  
33117-G5-TF-024  
1987  
PHOTOREVISED 1988  
DMA 2451 I SE-SERIES V895

