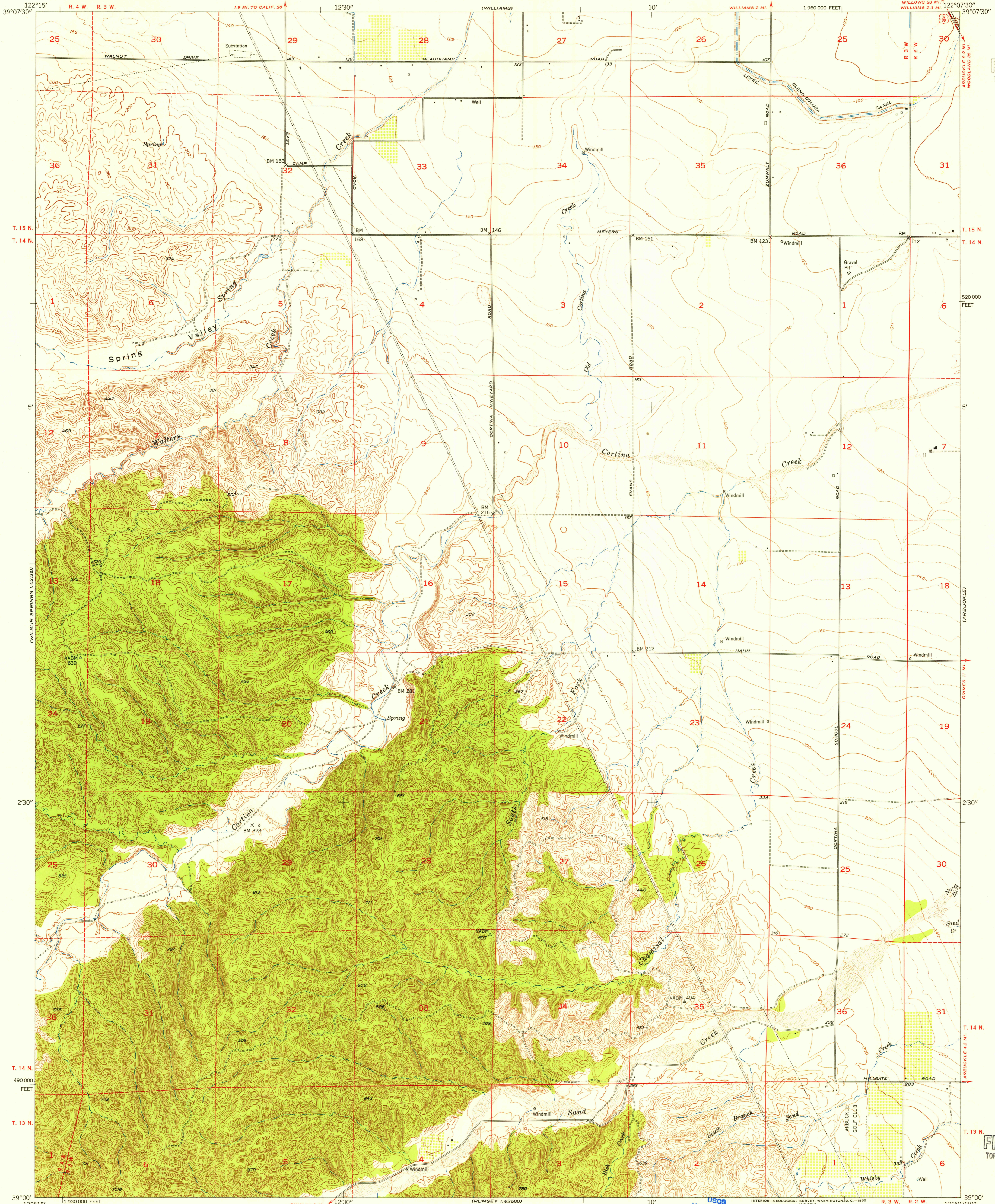


U.S.G.S.
FILE COPY
TOPOGRAPHIC DIVISION

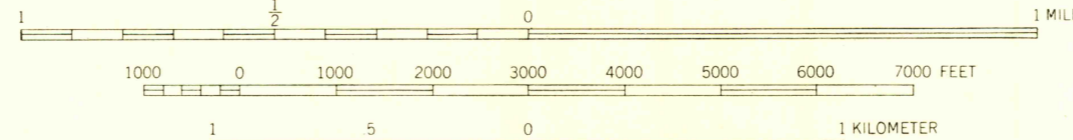
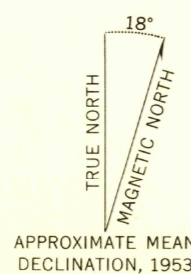


Mapped, edited, and published by the Geological Survey

Control by USGS and USC&GS

Topography by plane-table surveys 1905 and by Kelsh plotter methods
Culture and drainage compiled from aerial photographs taken 1949
Contour revision and field check 1953

Polyconic projection. 1927 North American datum
10,000-foot grid based on California coordinate system, zone 2
Dashed land lines indicate approximate locations



CONTOUR INTERVAL 20 FEET
DOTTED LINES REPRESENT 5 FOOT CONTOURS
DATUM IS MEAN SEA LEVEL

USGS
Historical File
Topographic Division

ROAD CLASSIFICATION	
Heavy-duty	Light-duty
Medium-duty	Unimproved dirt
U. S. Route	State Route



CORTINA CREEK, CALIF.
SW/4 COLUSA 15' QUADRANGLE
N3900-W12207.5/7.5

THIS MAP COMPLIES WITH NATIONAL MAP ACCURACY STANDARDS
FOR SALE BY U. S. GEOLOGICAL SURVEY, FEDERAL CENTER, DENVER, COLORADO OR WASHINGTON 25, D. C.
A FOLDER DESCRIBING TOPOGRAPHIC MAPS AND SYMBOLS IS AVAILABLE ON REQUEST

NAME CHANGED FROM 1953
SPRING VALLEY (31670) 3130
AUG 25 1955