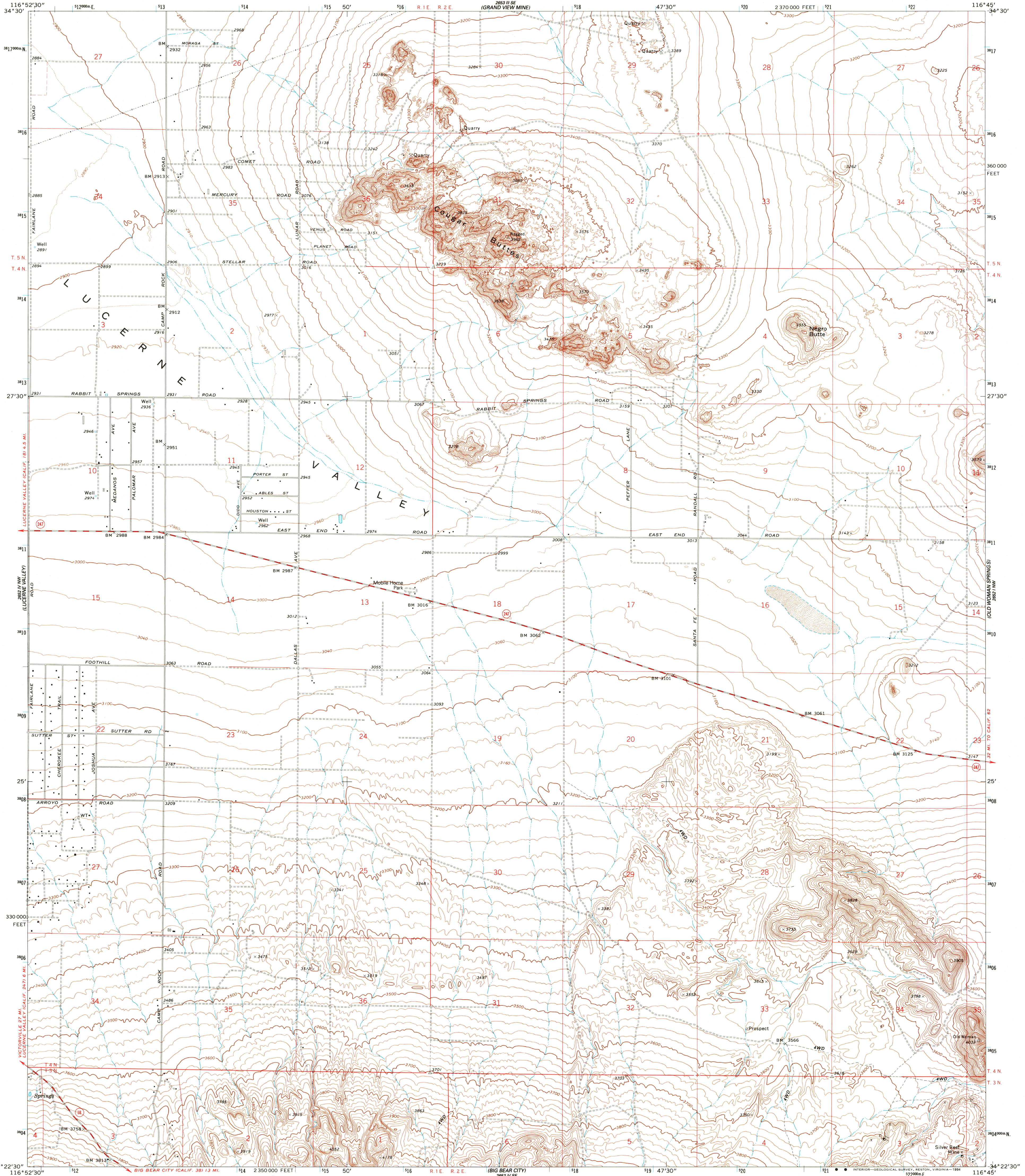
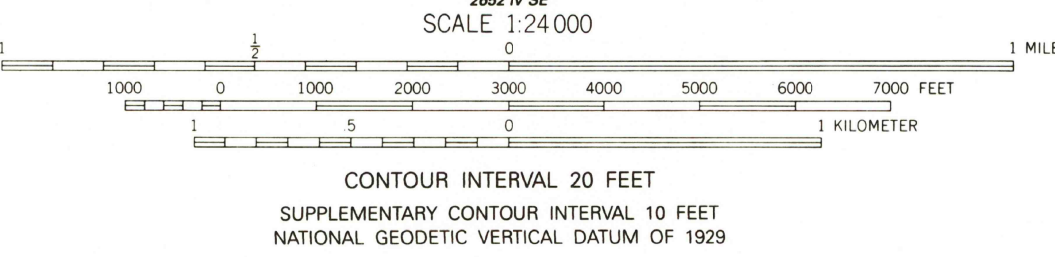
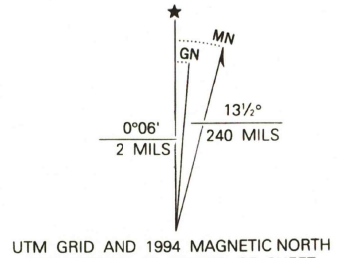


UNITED STATES  
DEPARTMENT OF THE INTERIOR  
GEOLOGICAL SURVEY

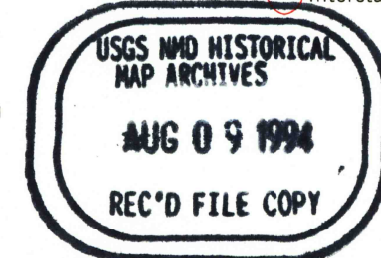
COUGAR BUTTES QUADRANGLE  
CALIFORNIA-SAN BERNARDINO CO.  
7.5 MINUTE SERIES (TOPOGRAPHIC)



Produced by the United States Geological Survey in cooperation with California Department of Water Resources  
Control by USGS and NOS/NOAA  
Compiled from aerial photographs taken 1969. Field checked 1971  
North American Datum of 1927 (NAD 27). Projection and 1000-foot ticks: California Coordinate System, zone 5 (Lambert Conformal Conic)  
Blue 1000-meter Universal Transverse Mercator ticks, zone 11  
North American Datum of 1983 (NAD 83) is shown by dashed corner ticks. The values of the shift between NAD 27 and NAD 83 for 7.5-minute intersections are obtainable from National Geodetic Survey NADCON software  
Fine red dashed lines indicate selected fence lines  
Photinspected from 1989 source; no major culture or drainage changes observed. Names verified 1994



THIS MAP COMPLIES WITH NATIONAL MAP ACCURACY STANDARDS  
FOR SALE BY U. S. GEOLOGICAL SURVEY, DENVER, COLORADO 80225, OR RESTON, VIRGINIA 22092  
A FOLDER DESCRIBING TOPOGRAPHIC MAPS AND SYMBOLS IS AVAILABLE ON REQUEST



ROAD CLASSIFICATION	
Primary highway, hard surface	Light-duty road, hard or improved surface
Secondary highway, hard surface	Unimproved road
Interstate Route	U. S. Route
	State Route

COUGAR BUTTES, CA  
34116-D7-TF-024

1971  
MINOR REVISION 1994  
DMA 2552 IV NE-SERIES V895