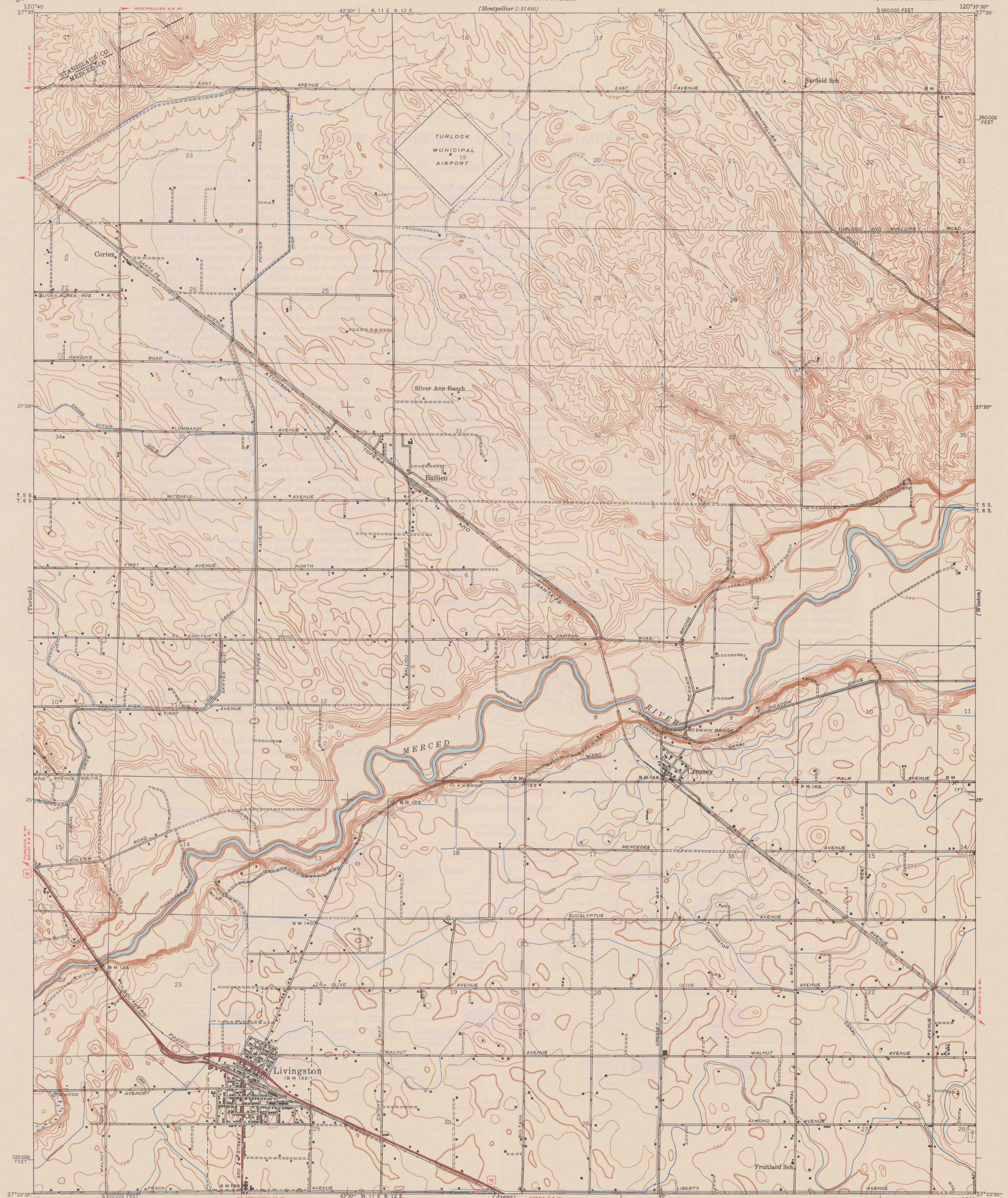


(Three True Feet)  
1:31,680



Mapped by the Geological Survey  
1914  
Culture revised in 1946

**ROAD CLASSIFICATION**  
1947  
Dependable hard surface  
Heavy-duty road  
Secondary hard surface  
All weather road  
More than two lanes indicated along road with tick at point of change

**U. S. Route**  
Lanes-surface graded  
Unsurfaced graded  
Old road  
State Route

APPROXIMATE MEAN  
DECLINATION, 1946

Scale 1:31,680  
0 500 1000 1500 2000 2500 3000 3500 4000 4500 5000 5500 6000 6500 7000 7500 8000 8500 9000 9500 10000  
0 1 2 3 4 5 6 7 8 9 10  
Kilometer

Contour interval 5 feet  
Datum is mean sea level

FOR EARLIER EDITION  
OF THIS MAP SEE ALSO  
3852 CLS 21 5  
UNDER SAME QUAD NAME

Polycyclic projection. 1927 North American datum  
10000 foot grid based on California (3)  
rectangular coordinate system  
Dotted corners indicate positions of meridians  
and parallel based on North American datum

**REFERENCE**  
CRESSEY, CALIF.  
Edition of 1948  
N 3722.5-W 12037.5/7.5

3700s  
Var  
U5  
7.5  
ed. 1948

Merced Co.