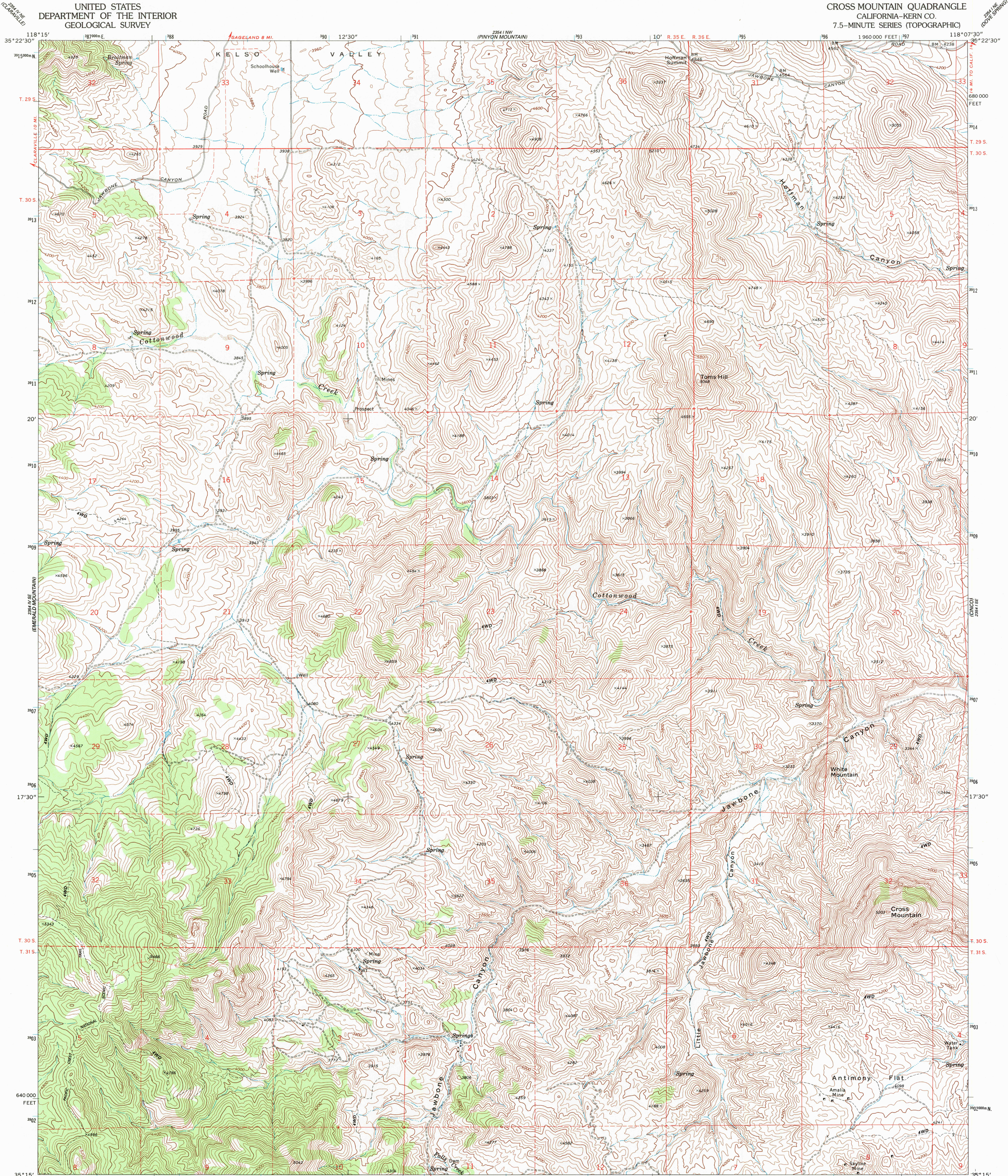
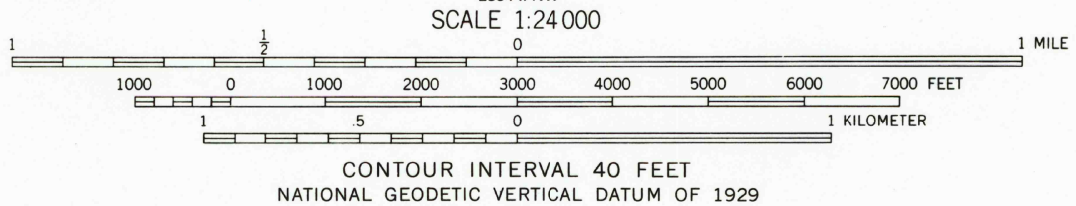
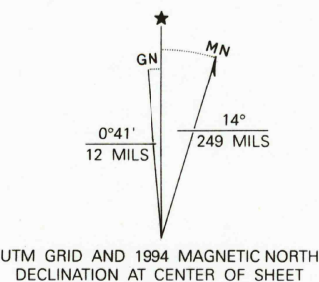


UNITED STATES  
DEPARTMENT OF THE INTERIOR  
GEOLOGICAL SURVEY

CROSS MOUNTAIN QUADRANGLE  
CALIFORNIA-KERN CO.  
7.5-MINUTE SERIES (TOPOGRAPHIC)



Produced by the United States Geological Survey  
Control by USGS and NOS/NOAA  
Compiled from aerial photographs taken 1971. Field checked 1972  
North American Datum of 1927 (NAD 27). Projection and  
10,000-foot ticks: California Coordinate System, zone 5  
(Lambert Conformal Conic)  
Blue 1,000-meter Universal Transverse Mercator ticks, zone 11  
North American Datum of 1983 (NAD 83) is shown by dashed  
corner ticks. The values of the shift between NAD 27 and NAD 83  
for 7.5-minute intersections are obtainable from National Geodetic  
Survey NADCON software  
Fine red dashed lines indicate selected fence lines  
Photinspected from 1989 source; no major culture  
or drainage changes observed. Names revised 1994



ROAD CLASSIFICATION  
Primary highway, hard surface ——— Light duty road, hard or improved surface ———  
Secondary highway, hard surface ——— Unimproved road ———  
○ Interstate Route ○ U. S. Route ○ State Route

CROSS MOUNTAIN, CA  
35118-C2-TF-024

1972  
MINOR REVISION 1994  
DMA 2354 1 SW-SERIES V895

THIS MAP COMPLIES WITH NATIONAL MAP ACCURACY STANDARDS  
FOR SALE BY U. S. GEOLOGICAL SURVEY, DENVER, COLORADO 80225, OR RESTON, VIRGINIA 22092  
A FOLDER DESCRIBING TOPOGRAPHIC MAPS AND SYMBOLS IS AVAILABLE ON REQUEST