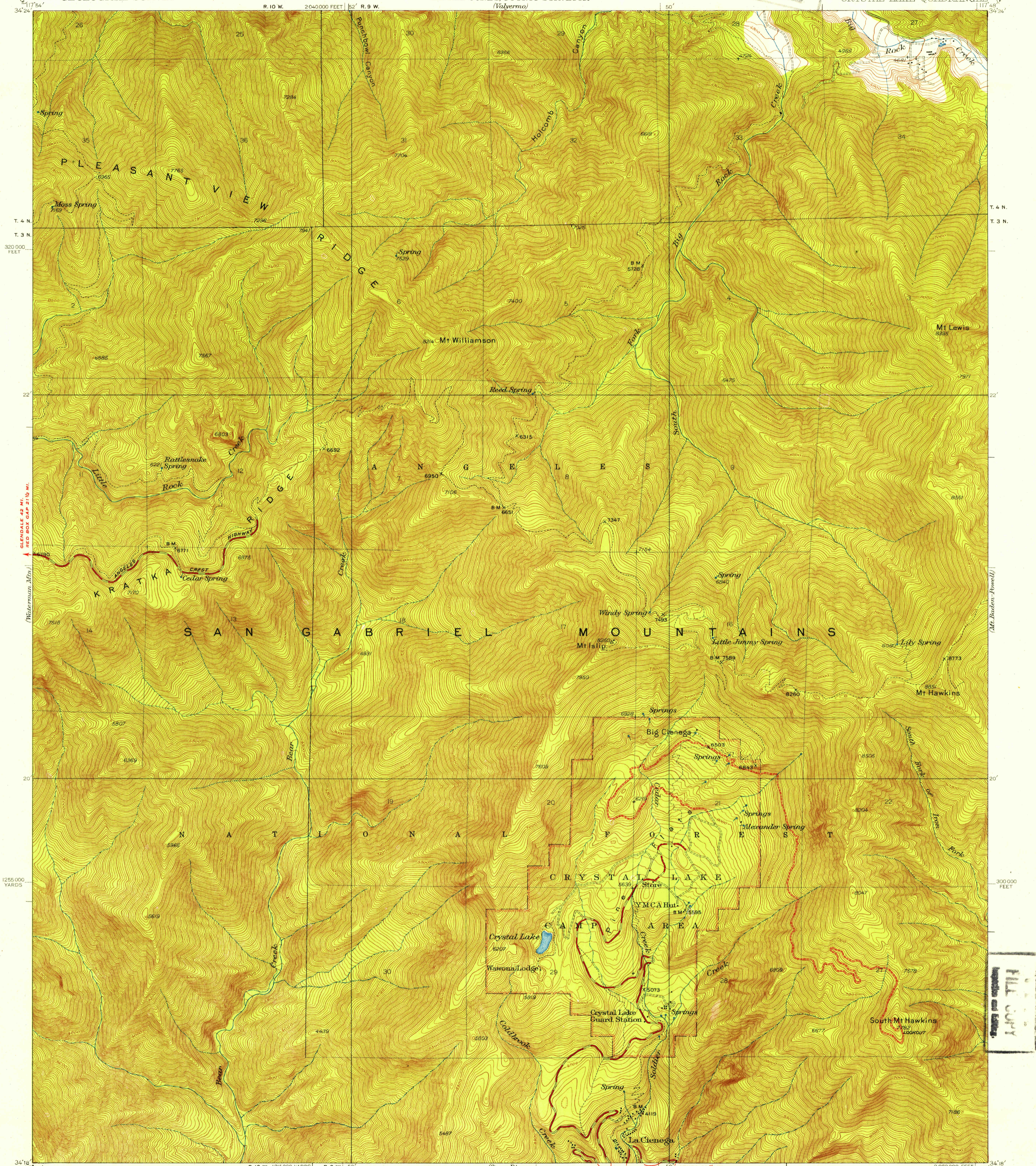


**FILE COPY**  
Inspection and Editing



34° 24' 34" N  
 34° 24' 34" N  
 T. 4 N.  
 T. 3 N.  
 320,000 FEET  
 22'  
 20'  
 1255,000 YARDS  
 34° 18'

117° 48' 34" W  
 117° 48' 34" W  
 T. 4 N.  
 T. 3 N.  
 300,000 FEET  
 34° 18'

Topography by C.W.H. Nessler  
 Surveyed in 1935-1936  
 (Camp Rincon)  
 Scale 25000  
 1 Mile  
 5000 Feet  
 Contour interval 25 feet  
 Datum is mean sea level  
 APPROXIMATE MEAN DECLINATION, 1936  
 POLYCONIC PROJECTION, NORTH AMERICAN DATUM  
 5000 YARD GRID BASED ON U.S. ZONE SYSTEM, G  
 10000 FOOT GRID BASED ON CALIFORNIA (5)  
 RECTANGULAR COORDINATE SYSTEM  
 Land lines pertaining to parts of T. 3 N.  
 R. 9 and 10 W. are omitted because land  
 plats and topography cannot be reconciled  
 CRYSTAL LAKE, CALIF.  
 Edition of 1941  
 N3418-W11748/6  
 JAN 26 1954  
 INFORMATION FURNISHED BY LOS ANGELES COUNTY  
 ROUTES USUALLY TRAVELED  
 HARD IMPERVIOUS SURFACES  
 OTHER SURFACE IMPROVEMENTS  
 1940  
 2 U.S. ROUTE  
 3 STATE ROUTE  
 USGS  
 Historical Topographic Division  
 U.S. GEOLOGICAL SURVEY  
 INSPECTION AND EDITING  
 1005