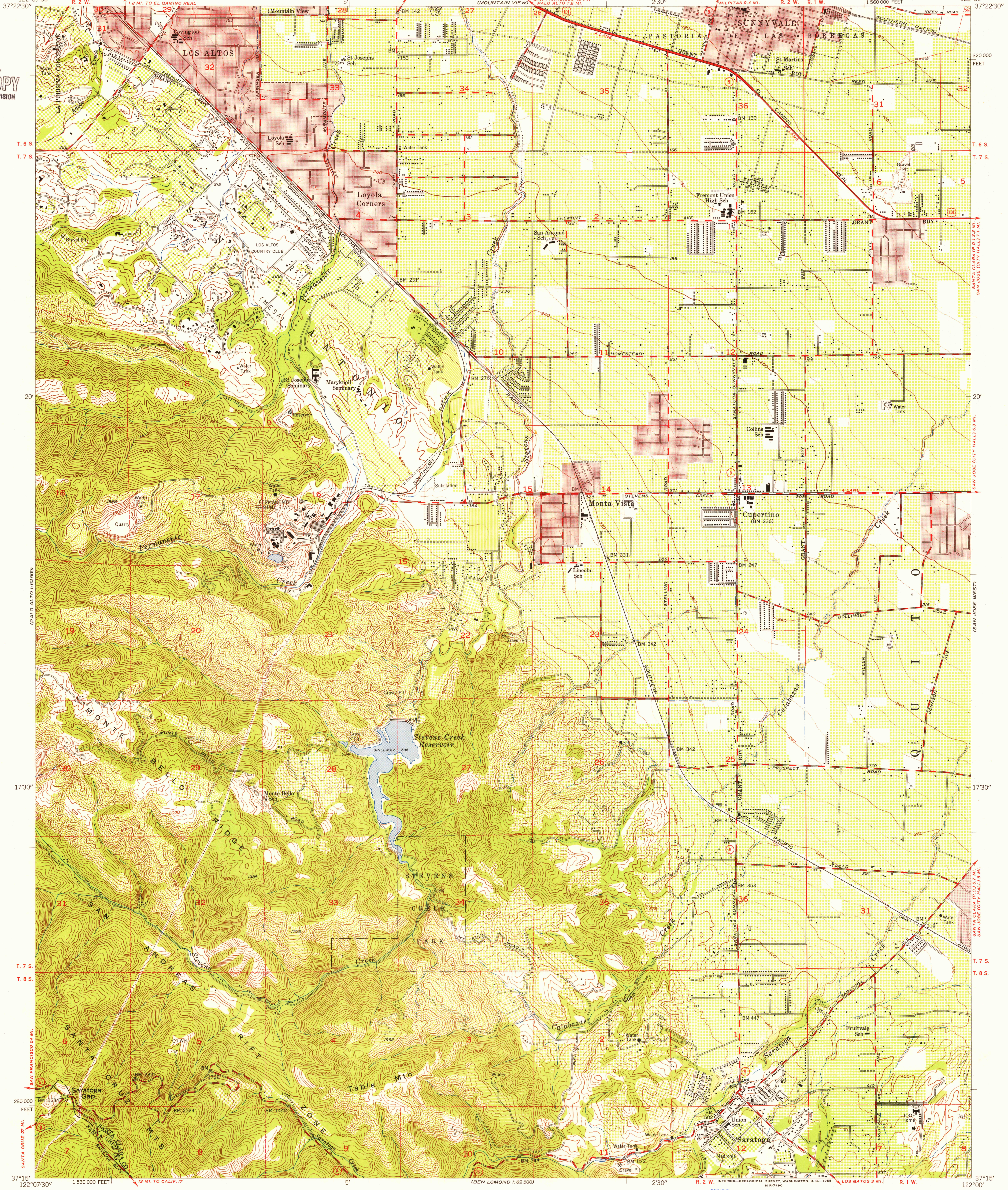
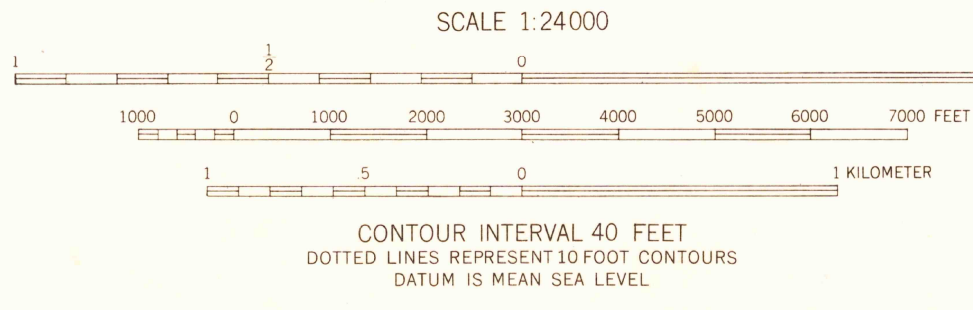
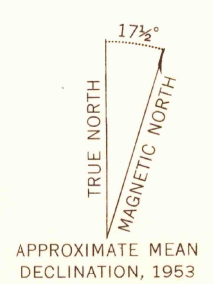


U.S.G.S.
FILE COPY
TOPOGRAPHIC DIVISION



Mapped, edited, and published by the Geological Survey
Control by USC&GS and USCE
Topography from aerial photographs by multiplex methods
and by plane-table surveys 1953. Aerial photographs taken 1948
Polyconic projection. 1927 North American datum
10,000-foot grid based on California coordinate system, zone 3
Red tint indicates areas in which only landmark buildings are shown
Dashed land lines indicate approximate locations
Unchecked elevations are shown in brown
The northeast portion of this map lies within a minor subsidence area
Contouring based on latest available adjustment of vertical control



USGS
Historical File
Topographic Division

ROAD CLASSIFICATION

Heavy-duty	4 LANE (6 LANE)	Light-duty
Medium-duty	4 LANE (6 LANE)	Unimproved dirt

U.S. Route (circle with number)
State Route (circle with number)

U.S.G.S.
FILE COPY
TOPOGRAPHIC DIVISION

CUPERTINO, CALIF.
SE/4 PALO ALTO 15' QUADRANGLE
N3715-W12200/7.5

AUG 2 1953

4180