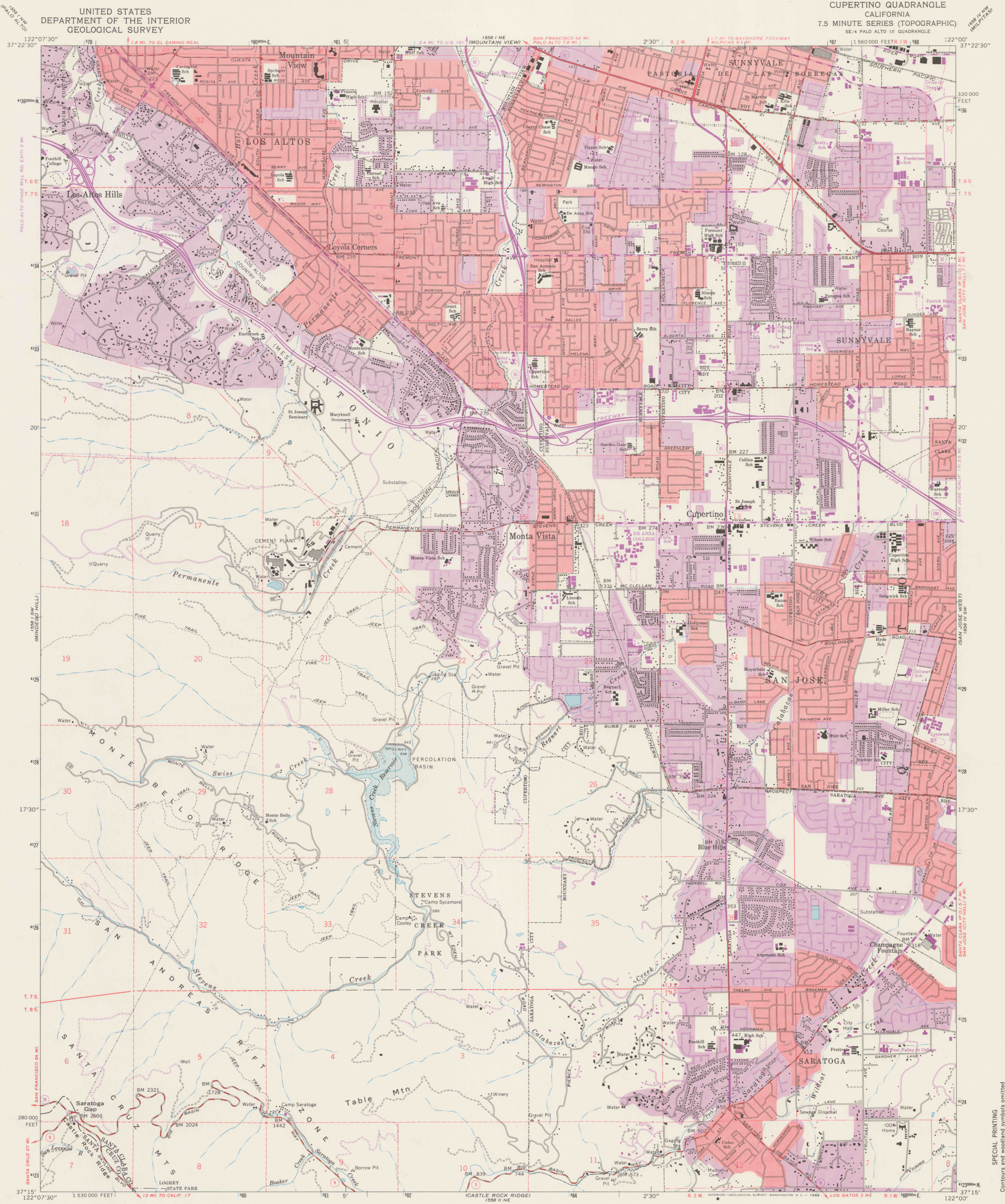


UNITED STATES  
DEPARTMENT OF THE INTERIOR  
GEOLOGICAL SURVEY

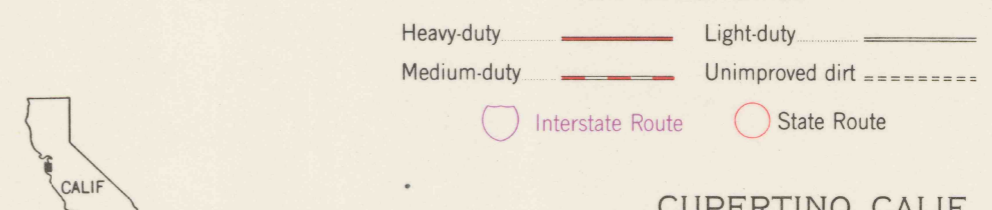
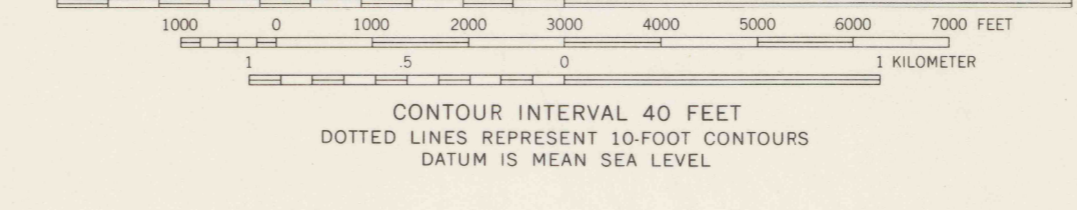
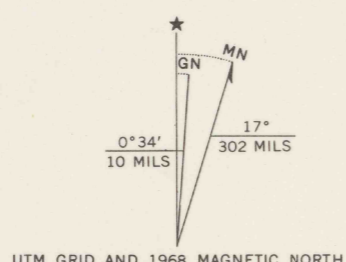
CUPERTINO QUADRANGLE  
CALIFORNIA  
7.5 MINUTE SERIES (TOPOGRAPHIC)  
SE/4 PALO ALTO 15' QUADRANGLE



Mapped, edited, and published by the Geological Survey with cooperation by the California Department of Water Resources Control by USGS, USC&GS, and USCE

Topography from aerial photographs by photogrammetric methods and by planetable surveys 1953. Aerial photographs taken 1948 Revised from aerial photographs taken 1960. Field check 1961  
Polyconic projection. 1927 North American datum  
10,000-foot grid based on California coordinate system, zone 3  
1000-meter Universal Transverse Mercator grid ticks, zone 10, shown in blue

Red tint indicates areas in which only landmark buildings are shown  
Dashed land lines indicate approximate locations  
Land lines unsurveyed in parts of T. 8 S. - R. 2 W.  
A portion of this map lies within a subsidence area  
Area covered by dashed light-blue pattern is subject to controlled inundation



THIS MAP COMPLIES WITH NATIONAL MAP ACCURACY STANDARDS  
FOR SALE BY U. S. GEOLOGICAL SURVEY, DENVER, COLORADO 80225 OR WASHINGTON, D. C. 20242  
A FOLDER DESCRIBING TOPOGRAPHIC MAPS AND SYMBOLS IS AVAILABLE ON REQUEST

Revisions shown in purple compiled from aerial photographs taken 1968. This information not field checked  
Purple tint indicates extension of urban areas

CUPERTINO, CALIF.  
SE/4 PALO ALTO 15' QUADRANGLE  
N3715-W12200/7.5

1961  
PHOTOGRAPHED 1968  
AMS 1558 I SE-SERIES V895

REFERENCE

SPECIAL PRINTING  
Contours and woodland symbols omitted

REF  
3700b  
Var  
U5  
7.5  
ed. 1968  
rep. 1969 pp