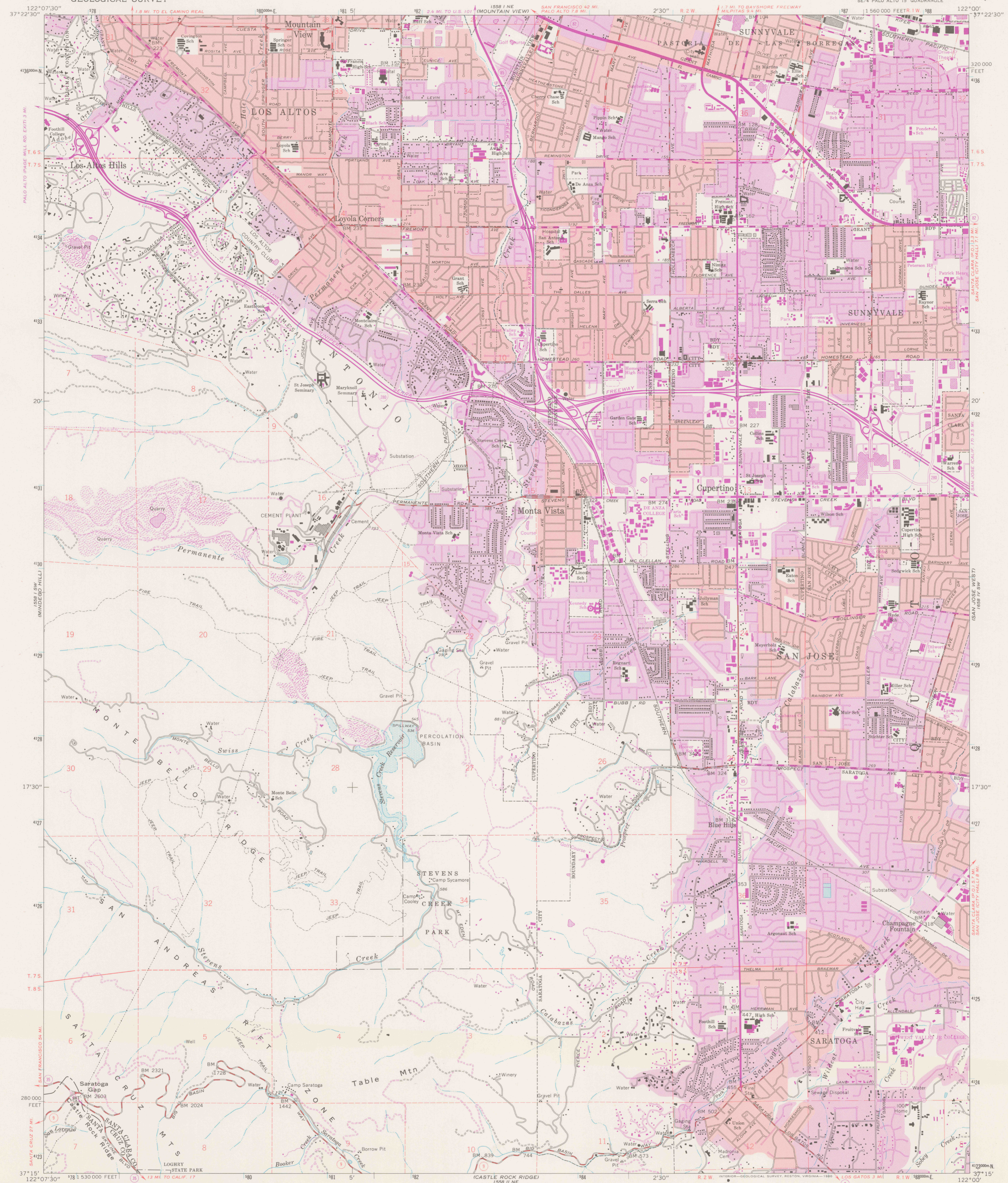


UNITED STATES  
DEPARTMENT OF THE INTERIOR  
GEOLOGICAL SURVEY

CUPERTINO QUADRANGLE  
CALIFORNIA  
7.5 MINUTE SERIES (TOPOGRAPHIC)  
SE 4 PALO ALTO 15' QUADRANGLE



Mapped, edited, and published by the Geological Survey with cooperation by the California Department of Water Resources Control by USGS, NOS/NOAA, and USCE

Topography by photogrammetric methods from aerial photographs taken 1945 and planimetric surveys 1953. Revised from aerial photographs taken 1960. Field checked 1961

Polycyclic projection. 10,000-foot grid based on California coordinate system, zone 3. 1000-meter Universal Transverse Mercator grid ticks, zone 10, shown in blue. 1927 North American Datum. To place on the predicted North American Datum 1983 move the projection lines 13 meters north and 95 meters east as shown by dashed corner ticks

Red tint indicates areas in which only landmark buildings are shown

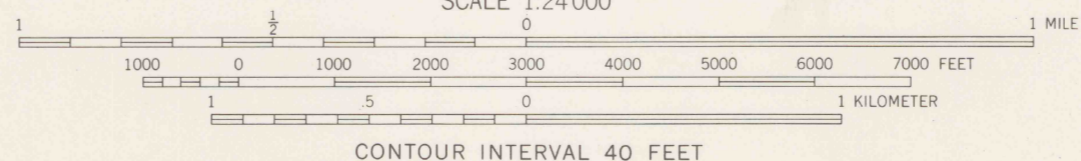
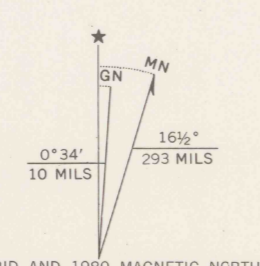
Dashed land lines indicate approximate locations

Land lines unsurveyed in parts of T. 8 S. - R. 2 W.

A portion of this map lies within a subsidence area

Area covered by dashed light-blue pattern is subject to controlled inundation

There may be private inholdings within the boundaries of the National or State reservations shown on this map



CONTOUR INTERVAL 40 FEET  
DOTTED LINES REPRESENT 10-FOOT CONTOURS  
NATIONAL GEODETIC VERTICAL DATUM OF 1929



ROAD CLASSIFICATION

Heavy-duty	Light-duty
Medium-duty	Unimproved dirt

○ Interstate Route    ○ State Route

THIS MAP COMPLIES WITH NATIONAL MAP ACCURACY STANDARDS  
FOR SALE BY U.S. GEOLOGICAL SURVEY, DENVER, COLORADO 80225, OR RESTON, VIRGINIA 22092  
A FOLDER DESCRIBING TOPOGRAPHIC MAPS AND SYMBOLS IS AVAILABLE ON REQUEST

Revisions shown in purple and woodland compiled from aerial photographs taken 1979 and other source data  
This information not field checked. Map edited 1980  
Purple tint indicates extension of urban areas

CUPERTINO, CALIF.  
SE 4 PALO ALTO 15' QUADRANGLE  
N 3715 - W 12200 / 7.5

1961  
PHOTOREVISED 1980  
DMA 1558 I SE-SERIES V895

REFERENCE

REF  
3700e  
Var  
U5  
7.5  
ed. 1980 PP