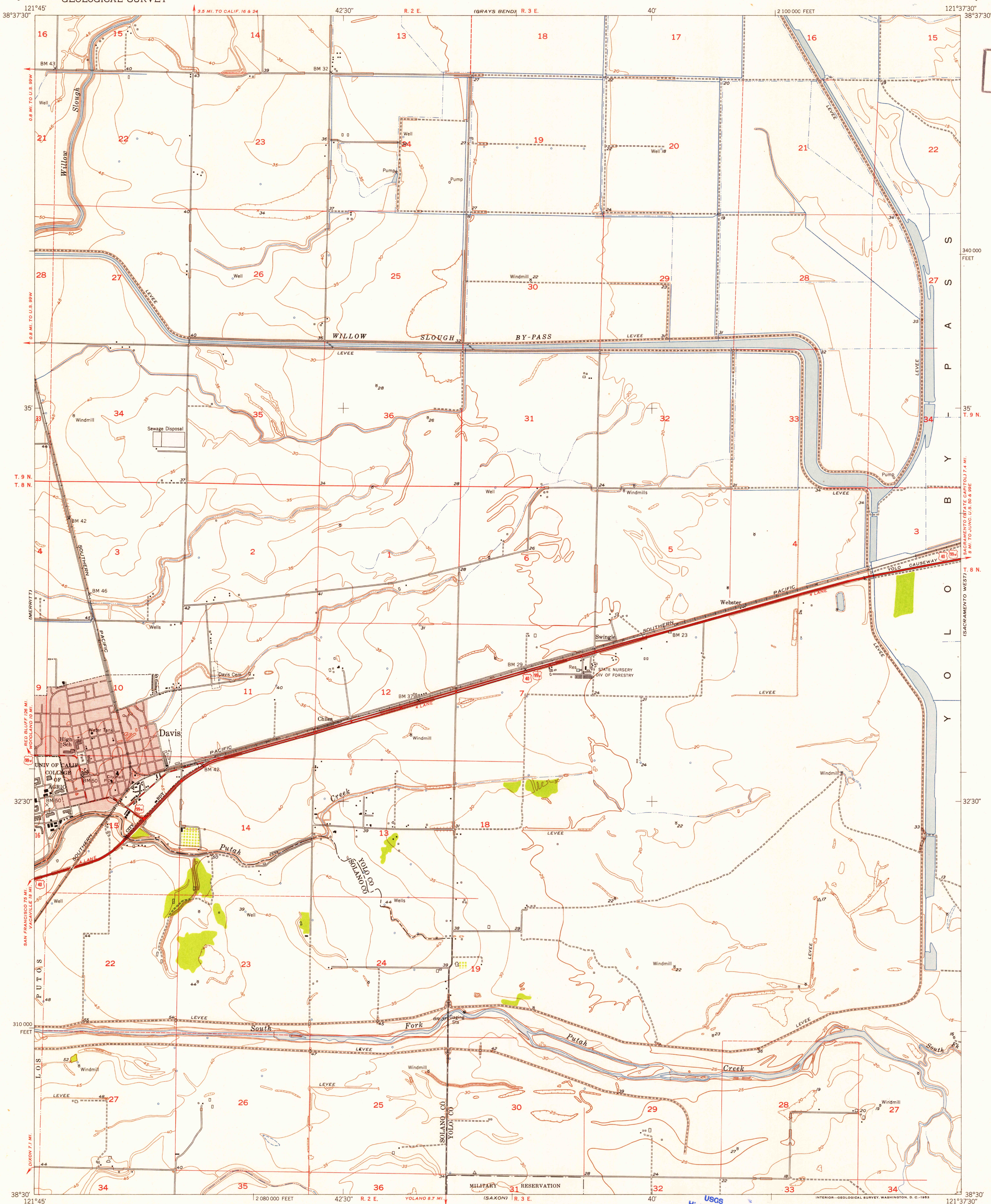


UNITED STATES  
DEPARTMENT OF THE INTERIOR  
GEOLOGICAL SURVEY

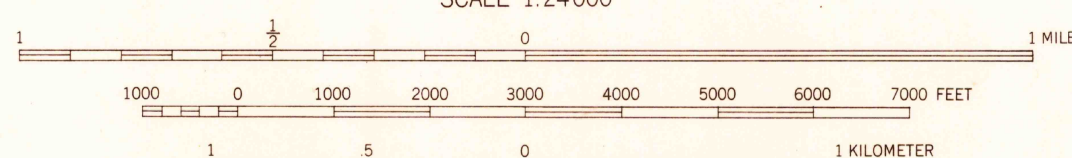
DAVIS QUADRANGLE  
CALIFORNIA  
7.5 MINUTE SERIES (TOPOGRAPHIC)

U.S.G.S.  
FILE COPY  
Inspection and Editing



Maped, edited, and published by the Geological Survey  
Control by USGS and USC&GS  
Maped 1905; remapped 1952  
Culture and drainage from photo-mosaic by USBR  
Aerial photographs taken 1949  
Topography from plane-table surveys by USGS 1952  
Polyconic projection. 1927 North American datum  
10,000-foot grid based on California coordinate system, zone 2  
Red tint indicates area in which only landmark buildings are shown  
Dashed land lines indicate approximate locations  
Yolo By-Pass area subject to inundation  
during periods of high water

TRUE NORTH  
MAGNETIC NORTH  
APPROXIMATE MEAN  
DECLINATION, 1952



CONTOUR INTERVAL 5 FEET  
CONTOURS INCOMPLETE ALONG EMBANKMENTS AND DITCHES  
DATUM IS MEAN SEA LEVEL

THIS MAP COMPLIES WITH NATIONAL MAP ACCURACY STANDARDS  
FOR SALE BY U.S. GEOLOGICAL SURVEY, FEDERAL CENTER, DENVER, COLORADO OR WASHINGTON 25, D. C.  
A FOLDER DESCRIBING TOPOGRAPHIC MAPS AND SYMBOLS IS AVAILABLE ON REQUEST

USGS  
Historical File  
Topographic Division



ROAD CLASSIFICATION  
Heavy-duty 4 LANE 16 LANE Light-duty  
Medium-duty 4 LANE 16 LANE Unimproved dirt  
U.S. Route State Route

U.S.G.S.  
FILE COPY  
Inspection and Editing

DAVIS, CALIF.  
N3830-W12137.5/7.5

1952

NAME CHANGED FROM SWINGLE  
(1:31682)

SEP 11 1953

3745